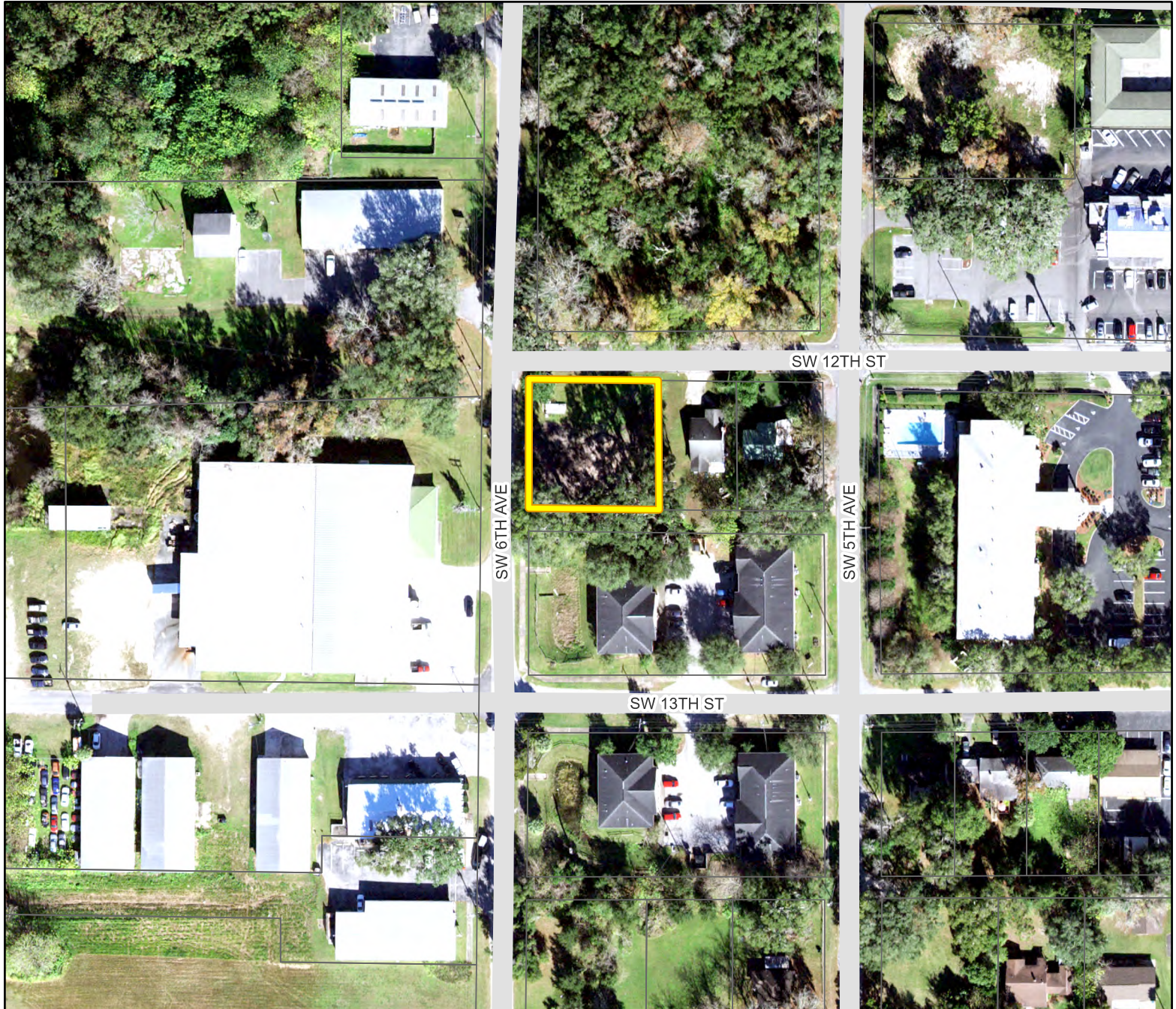
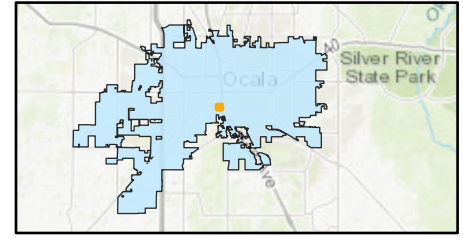


AERIAL MAP

P&Z Meeting: June 12, 2023
Location Map

Case Number: ZON23-45189
Parcel Number: 28566-000-12
Property Size: Approximately 0.29 acres
Land Use Designation: High Intensity / Central Core
Zoning: B-1A, Limited Neighborhood Business District
Proposal: A request to rezone from B-1A, Limited Neighborhood Business, to R-3, Multi-Family Residential



 Property
 Parcels



Prepared by the City of Ocala
Growth Management Department