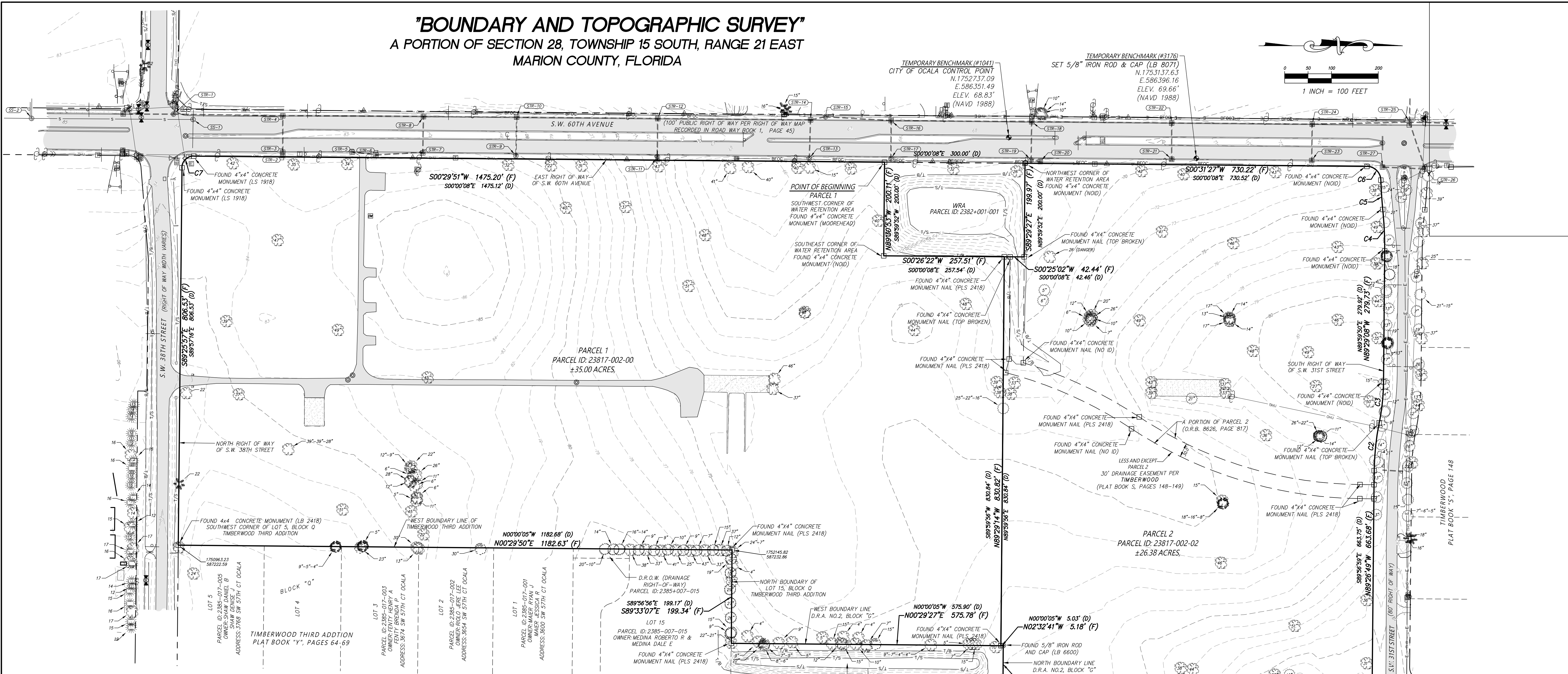
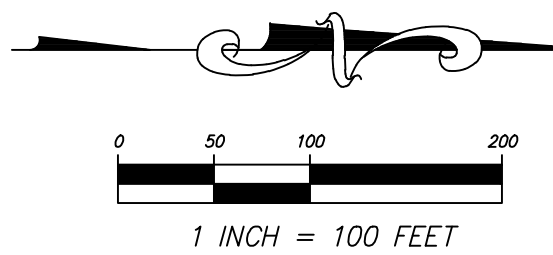




**"BOUNDARY AND TOPOGRAPHIC SURVEY"**  
 A PORTION OF SECTION 28, TOWNSHIP 15 SOUTH, RANGE 21 EAST  
 MARION COUNTY, FLORIDA



**STORM DRAINAGE STRUCTURES**

STR-1- RIM: 83.49 INV: 77.89 (18" RCP NW) INV: 78.34 (18" RCP N) INV: 78.65 (18" RCP S)	STR-8- RIM: 80.93 INV: 72.53 (24" RCP N) INV: 75.79 (24" RCP S) INV: 72.62 (15" RCP E)	STR-15- RIM: 69.14 INV: 57.98 (48" RCP N) INV: 57.39 (54" RCP S) INV: 59.60 (18" RCP E)	STR-22- RIM: 66.82 INV: 57.14 (60" RCP N) INV: 57.79 (54" RCP S) INV: 59.60 (18" RCP E)
STR-2- RIM: 81.96 INV: 78.62 (18" RCP W) INV: 78.62 (18" RCP E)	STR-9- RIM: 80.08 INV: 75.89 (15" RCP W)	STR-16- RIM: 66.82 INV: 57.77 (48" RCP N) INV: 57.87 (48" RCP S) INV: 59.02 (18" RCP E)	STR-23- RIM: 72.81 INV: 64.95 (18" RCP W)
STR-3- RIM: 78.93 (18" RCP W)	STR-10- RIM: 79.32 INV: 72.07 (24" RCP N) INV: 72.15 (24" RCP S) INV: 74.47 (15" RCP E)	STR-17- RIM: 67.97 INV: 59.96 (18" RCP E)	STR-24- RIM: 72.97 INV: 56.95 (60" RCP N) INV: 57.02 (60" RCP S) INV: 63.98 (18" RCP E)
STR-4- RIM: 82.30 INV: 77.21 (24" RCP N) INV: 77.34 (18" RCP S) INV: 77.47 (18" RCP E)	STR-11- RIM: 79.32 INV: 68.35 (15" RCP W)	STR-18- RIM: 67.97 INV: 57.65 (54" RCP N) INV: 57.74 (48" RCP S) INV: 61.90 (15" RCP E)	STR-25- RIM: 73.75 INV: 61.98 (36" RCP N) INV: 56.00 (60" RCP S) INV: 68.57 (18" RCP E) INV: 55.79 (66" RCP W)
STR-5- RIM: 81.64 INV: 78.15 (15" RCP N)	STR-12- RIM: 71.34 INV: 58.84 (30" RCP N) INV: 65.44 (24" RCP S) INV: 66.24 (15" RCP E)	STR-19- RIM: 68.29 INV: 64.46 (18" RCP N) INV: 64.09 (15" RCP E)	STR-26- RIM: 74.00 INV: 71.00 (18" RCP SW) INV: 70.76 (18" RCP S)
STR-6- RIM: 80.87 INV: 77.21 (15" RCP N) INV: 77.24 (15" RCP S)	STR-13- RIM: 66.36 INV: 59.10 (18" RCP W)	STR-20- RIM: 67.34 INV: 64.54 (18" RCP S)	STR-27- RIM: 74.09 INV: 70.88 (18" RCP N)
STR-7- RIM: 81.03 INV: 73.15 (15" RCP W) INV: 76.79 (15" RCP S)	STR-14- RIM: 66.27 INV: 58.29 (42" RCP N) INV: 58.37 (30" RCP S) INV: 58.78 (18" RCP E)	STR-21- RIM: 69.07 INV: 60.57 (18" RCP W)	

**CURVE TABLE (F)**

CURVE	LENGTH	RADIUS	DELTA	CHORD	BEARING
C1	379.68	2730.00	007°58'07"	379.38	N03°24'54"W
C2	102.96	540.00	010°55'29"	102.81	N83°59'26"W
C3	88.23	460.00	010°59'20"	88.09	N84°02'52"W
C4	88.70	800.00	006°21'08"	88.65	S87°16'55"W
C5	62.91	827.00	004°21'30"	62.89	S86°20'03"W
C6	45.95	30.00	087°45'37"	41.59	S44°25'34"W
C7	39.21	25.00	089°51'20"	35.31	S44°16'42"E

**CURVE TABLE (D)**

CURVE	LENGTH	RADIUS	DELTA	CHORD	BEARING
C1	379.48	2730.00	007°57'51"	379.17	S03°55'52"E
C2	102.97	540.00	010°55'30"	102.81	S84°29'18"E
C3	88.13	460.00	010°58'40"	88.00	S84°30'53"E
C4	88.75	800.00	006°21'21"	88.70	N86°49'11"E
C5	62.79	827.00	004°20'59"	62.77	N85°48'59"E
C6	46.08	30.00	088°00'05"	41.68	N43°59'41"E
C7	39.24	25.00	089°56'22"	35.34	N44°58'19"W

**SANITARY SEWER STRUCTURES**

SS-1- RIM: 83.43 INV: 76.12 (8" PVC S) INV: 76.24 (8" PVC W) INV: 76.12 (8" PVC E)	SS-2- RIM: 84.96 INV: 74.46 (8" PVC N) INV: 71.64 (8" PVC N) INV: 71.56 (8" PVC S) INV: 71.63 (8" PVC W)
--	---

SHEET 2 OF 2  
ONE IS NOT COMPLETE WITHOUT THE OTHERS

SHEET 2 OF 2  
ONE IS NOT COMPLETE WITHOUT THE OTHER  
SEE SHEET 1 OF 2 FOR NOTES, LEGENDS, SURVEYOR'S  
CERTIFICATION, BOUNDARY, ETC.  
SEE SHEET 2 FOR DRAWING DETAIL

**REVISIONS**

FB/PC	DATE	DRAWN	REVISION	CKD
	02/23/26	M.D.	ADDRESS STAFF COMMENTS	C.J.H.
	04/20/26	J.T.	ADDRESS CITY COMMENTS	C.J.H.

LOCATED IN SECTION 28, TOWNSHIP 15  
SOUTH, RANGE 21 EAST  
MARION COUNTY, FLORIDA

PLAT OF BOUNDARY AND TOPOGRAPHIC  
SURVEY -FOR-  
TBM II, LLC.

FB/PG	FIELD DATE	JOB NO.	2 OF 2
25-3-23/24	09/22/25	231129BND&TOPOR2	
DRAWING DATE	BY	APPROVED	SCALE
10/13/25	MRD	C.J.H.	1" = 100'