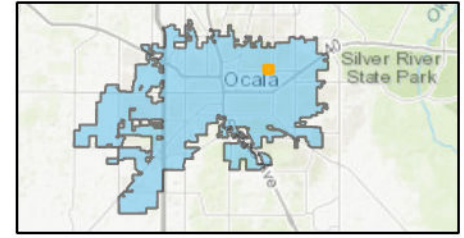


AERIAL MAP

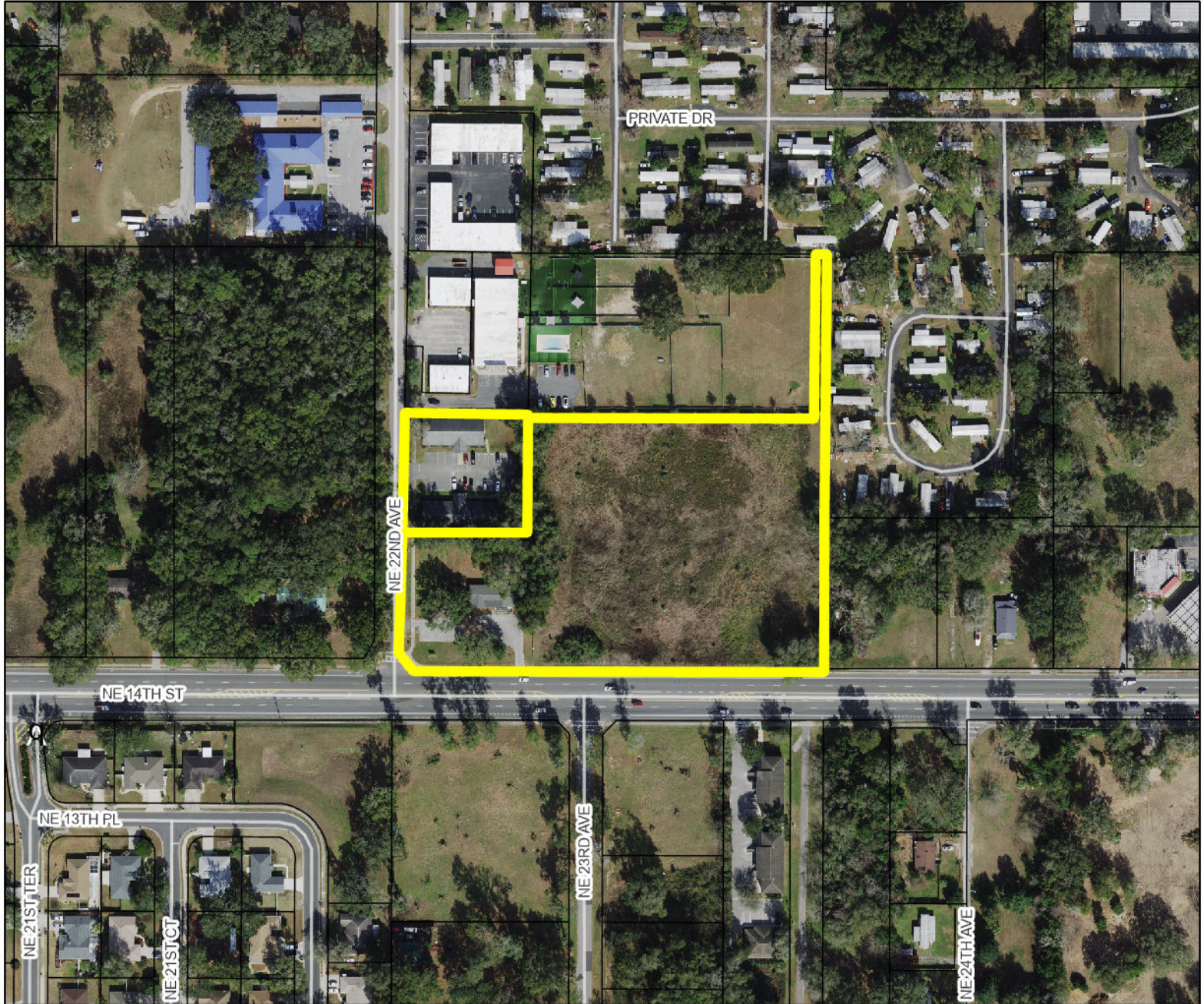
P&Z Meeting: January 13, 2025



Case Number: ZON24-0007
Parcel: 26394-000-00 & 26392-000-00

Location Map



Property Size: Approximately 5.57 acres
Land Use Designation: Low Intensity
Zoning: M-1, Light Industrial, O-1, Office, MH, Mobile Home, & RO, Residential Office
Proposal: A request to rezone from M-1, Light Industrial, O-1, Office, MH, Mobile Home, & RO, Residential Office, to INST, Institutional.



-  Parcels
-  Subject Property



Prepared by the City of Ocala
Growth Management Department
by ewjohnson on 12/5/2024