

K:\004_C\004087003-TBII Comm Outparcel Development\004087003-CONCEPTUAL SUBDIVISION PLAN\004087003-Conceptual Subdivision Plan.dwg (Last Modified: 04/26/2024) 11:58 AM
 This document, together with the concepts and designs presented herein, is intended only for the specific purpose and client for which it was prepared. Reuse of and improper reliance on this document without written authorization and adaptation by Kimley-Horn and Associates, Inc. shall be without liability to Kimley-Horn and Associates, Inc.

LEGEND

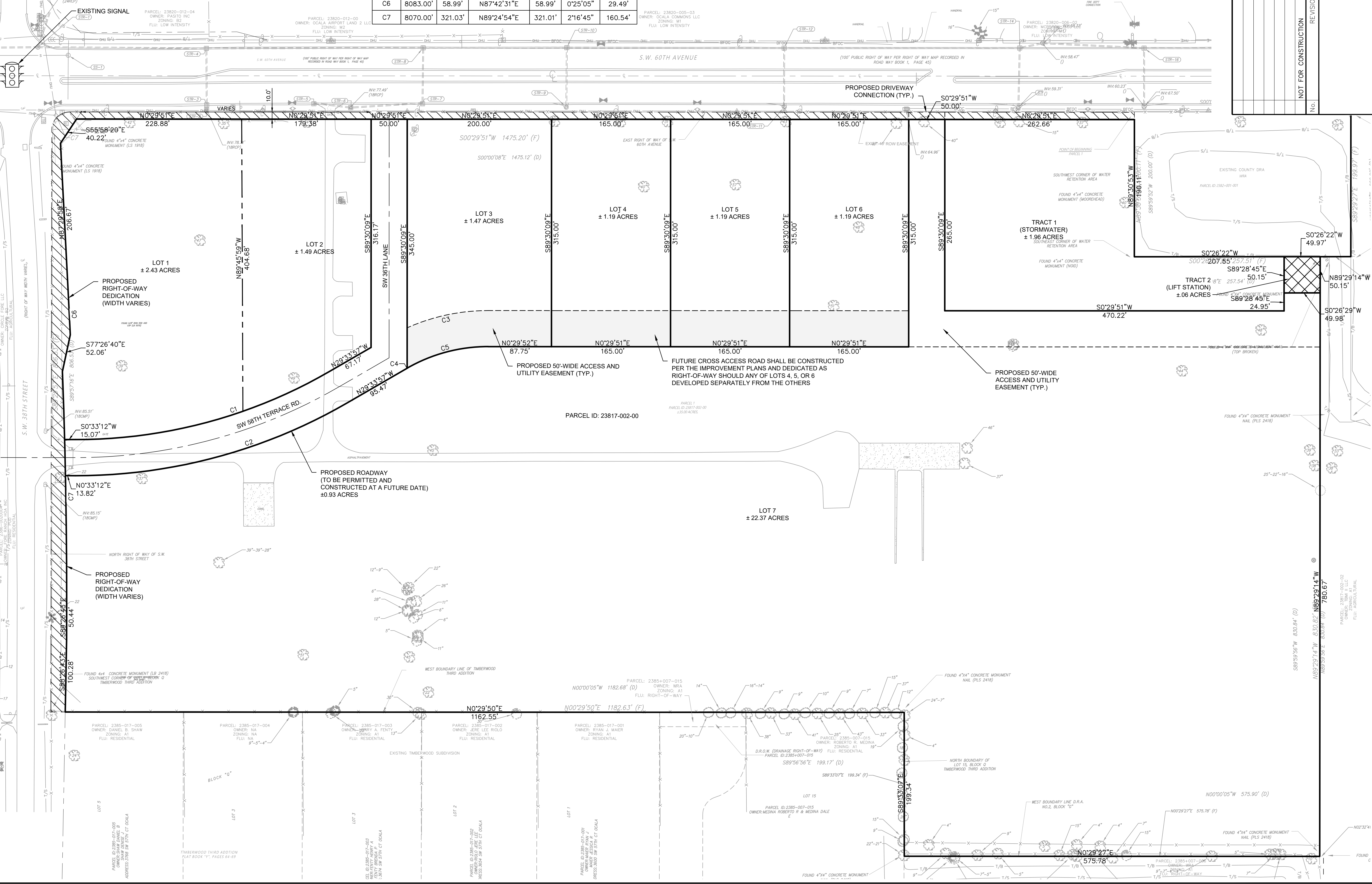
- APPROXIMATE LOCATION OF SOIL BORING
- FUTURE CROSS ACCESS ROAD

CURVE TABLE						
CURVE	RADIUS	LENGTH	CHORD BEARING	CHORD	DELTA	TANGENT
C1	700.00'	367.98'	N14°30'22"W	363.75'	30°07'09"	188.35'
C2	750.00'	394.26'	N14°30'22"W	389.74'	30°07'09"	201.80'
C3	275.00'	115.63'	S11°32'53"E	114.78'	24°05'29"	58.68'
C4	225.00'	0.53'	N29°29'52"W	0.53'	0°08'10"	0.27'
C5	225.00'	117.52'	N14°27'58"W	116.19'	29°55'39"	60.14'
C6	8083.00'	58.99'	N87°42'31"E	58.99'	0°25'05"	29.49'
C7	8070.00'	321.03'	N89°24'54"E	321.01'	2°16'45"	160.54'

NORTH

GRAPHIC SCALE IN FEET
0 30 60 120

NO.	REVISIONS	DATE	BY	
				NOT FOR CONSTRUCTION



Kimley-Horn

© 2024 KIMLEY-HORN AND ASSOCIATES, INC.
 1700 SE 17TH STREET, SUITE 200, OCALA, FLORIDA 34471
 PHONE: 352-438-3000
 WWW.KIMLEY-HORN.COM REGISTRY NO. 35106

CONCEPTUAL SUBDIVISION PLAN
TBII COMMERCIAL OUTPARCEL DEVELOPMENT PREPARED FOR TBII II, LLC

KHA PROJECT: 042887003
 DATE: APRIL 2024
 SCALE: AS SHOWN
 DESIGNED BY: KHA
 DRAWN BY: JAF
 CHECKED BY: JAF

LICENSED PROFESSIONAL: JAMESON A. FREDERICK, P.E.
 FLORIDA LICENSE NUMBER: 81405

CITY OF OCALA, FLORIDA
 SHEET NUMBER: CS02

