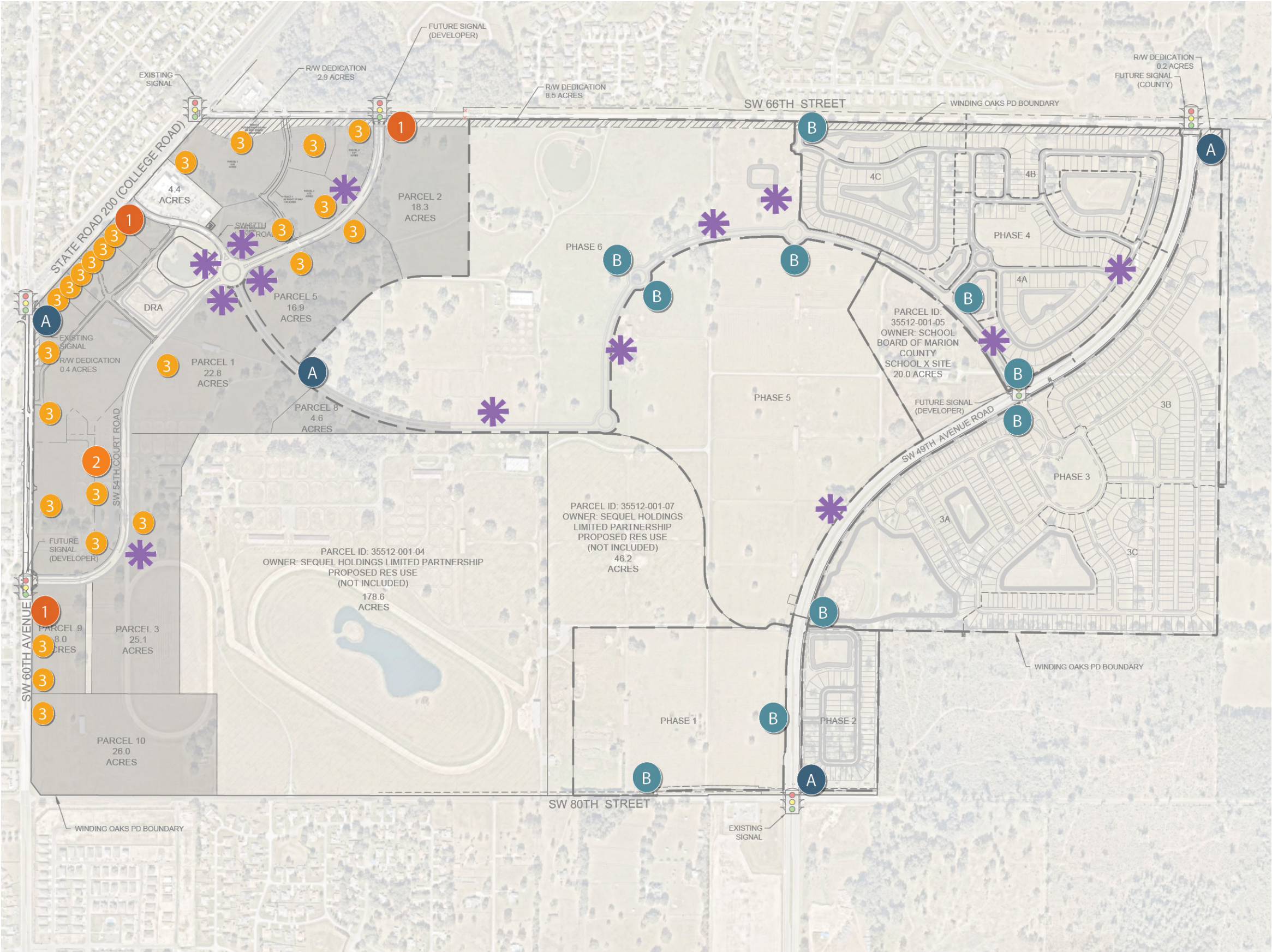


WINDING OAKS | Kimley»Horn  
MONUMENTATION AND BRANDING PACKAGE - JUNE 18, 2025





**LEGEND**

**RESIDENTIAL**

- A** PRIMARY
- B** SECONDARY

**COMMERCIAL**

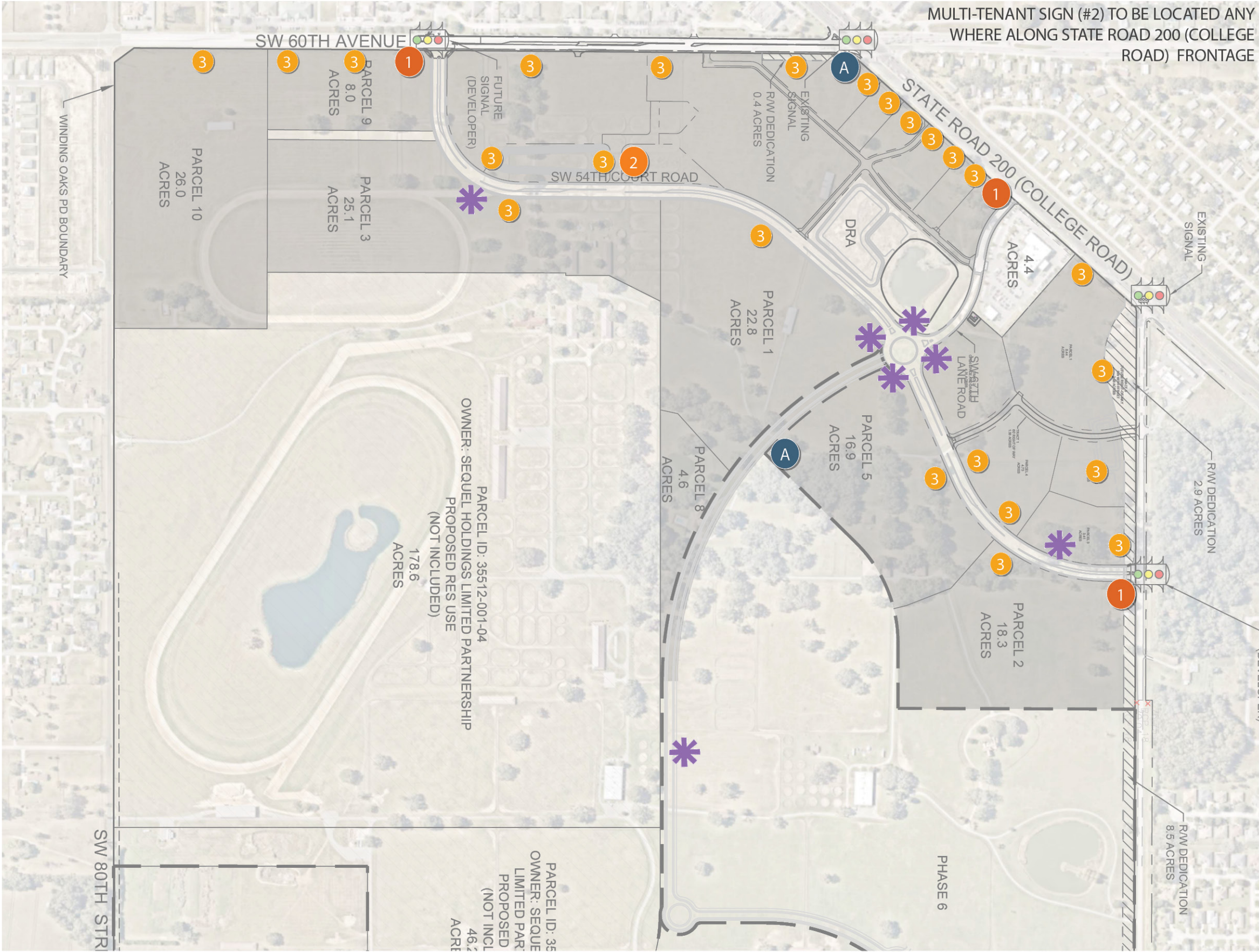
- 1** MULTI-TENANT
- 2** MONUMENT
- 3** SINGLE TENANT

**WAYFINDING**

- \*** DIRECTIONAL SIGNAGE







**LEGEND**

**RESIDENTIAL**

- A** PRIMARY
- B** SECONDARY

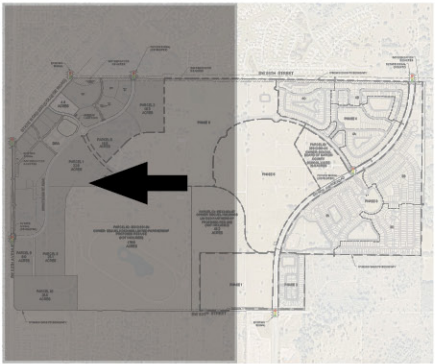
**COMMERCIAL**

- 1** MULTI-TENANT
- 2** MONUMENT
- 3** SINGLE TENANT

**WAYFINDING**

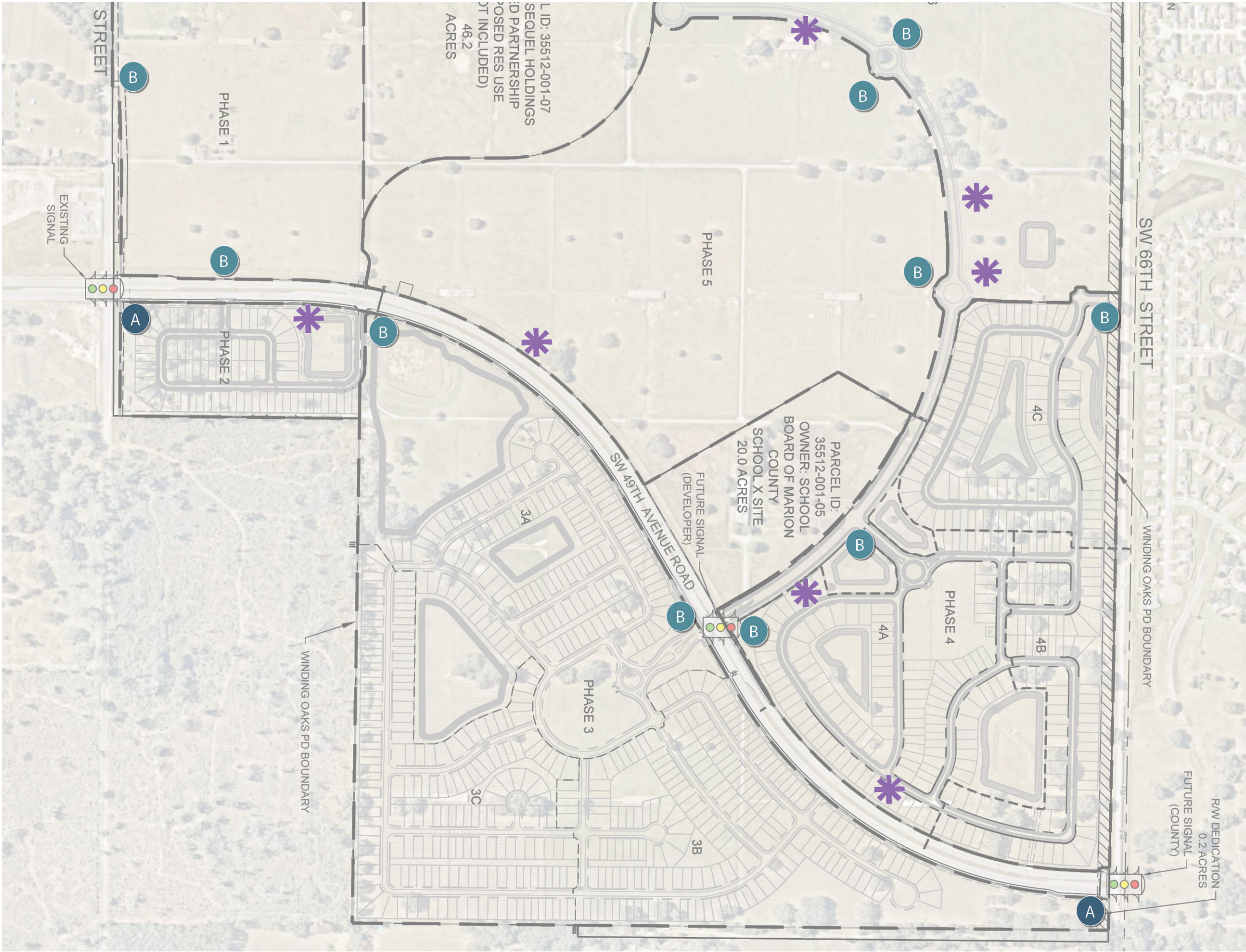
- \*** DIRECTIONAL SIGNAGE

**KEY MAP**



**SIGNAGE PLAN - LOCATIONS**





### LEGEND

#### RESIDENTIAL

- A PRIMARY
- B SECONDARY

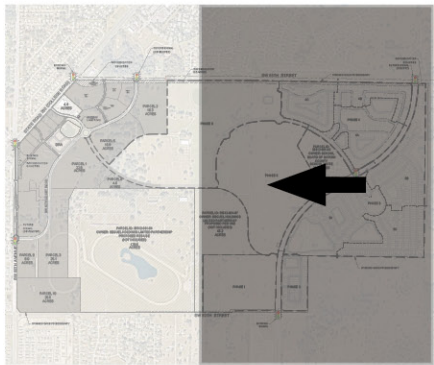
#### COMMERCIAL

- 1 MULTI-TENANT
- 2 MONUMENT
- 3 SINGLE TENANT

#### WAYFINDING

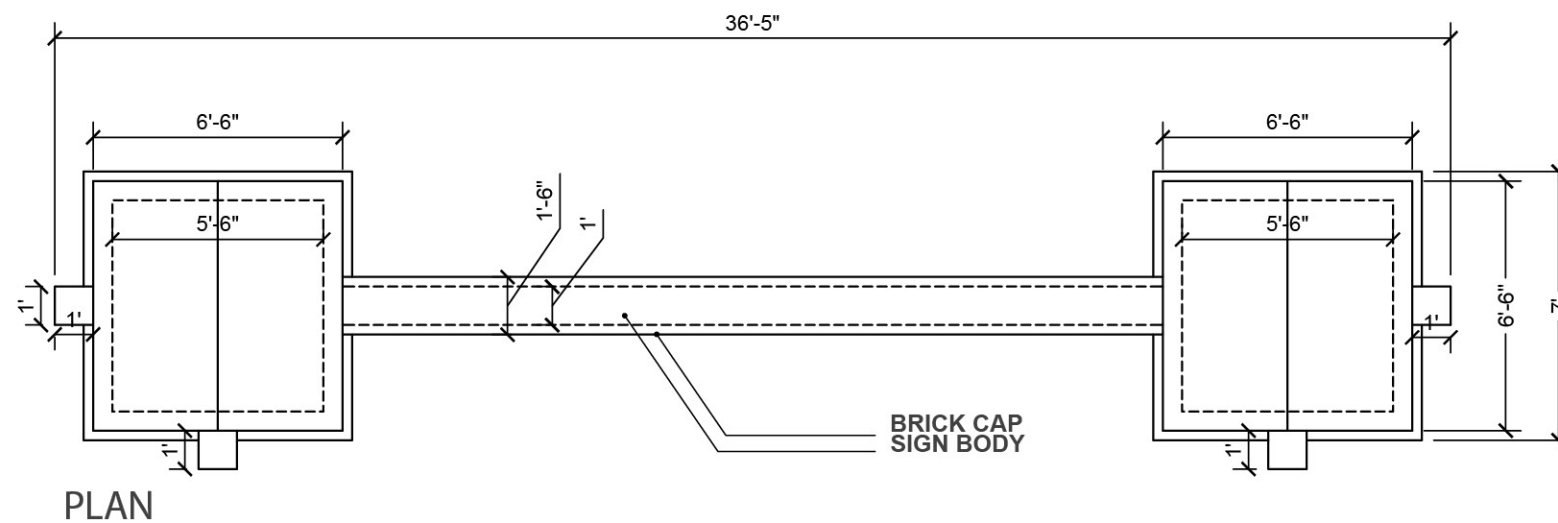
- \* DIRECTIONAL SIGNAGE

#### KEY MAP



# SIGNAGE PLAN - LOCATIONS



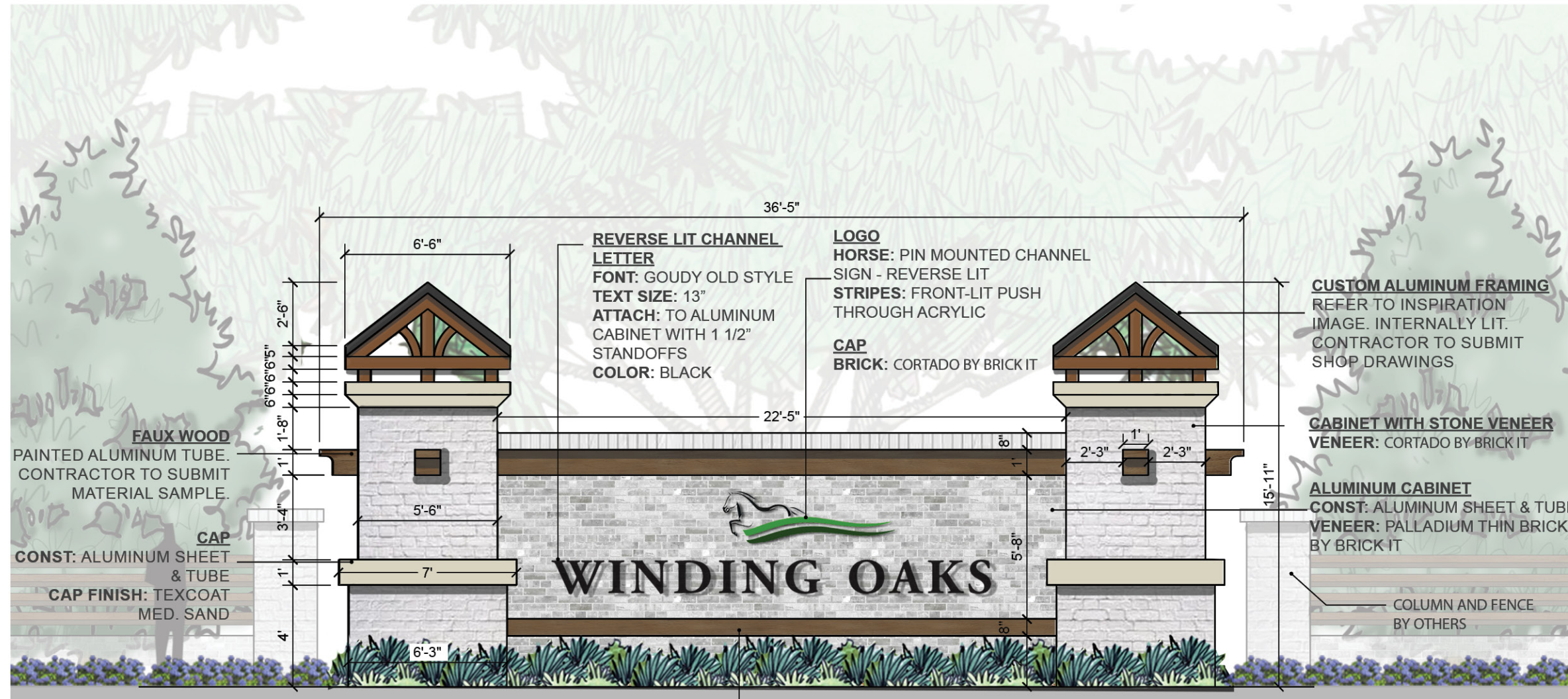


ROOF / LIGHTING INSPIRATION

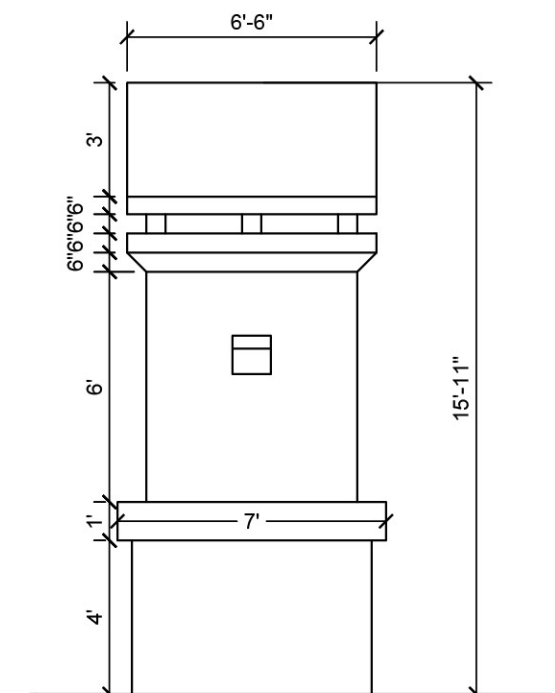


### LOGO AND COLOR

LIGHT GREEN: CMYK 70, 17, 100, 4  
 DARK GREEN: CMYK 80, 46, 100, 53  
 HORSE: BLACK



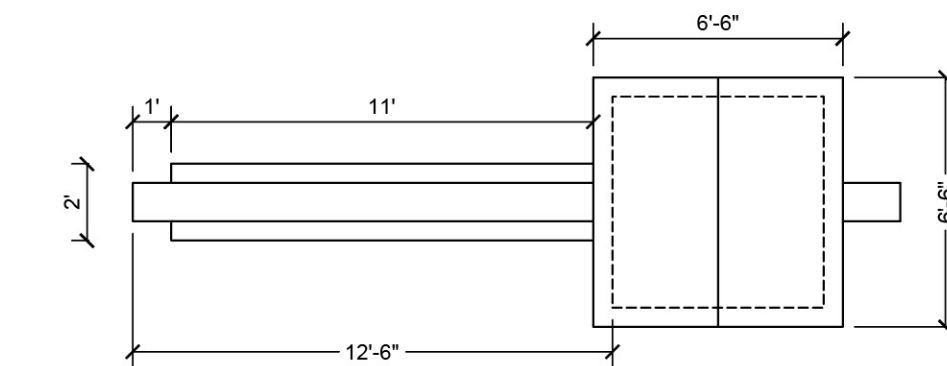
FRONT ELEVATION



SIDE ELEVATION

## A PRIMARY ENTRY MONUMENT SIGN





PLAN

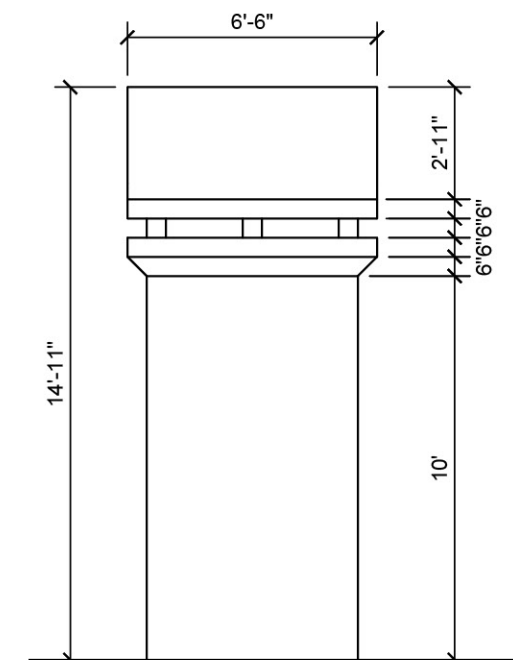


ROOF / LIGHTING INSPIRATION



LOGO AND COLOR

LIGHT GREEN: CMYK 70, 17, 100, 4  
DARK GREEN: CMYK 80, 46, 100, 53



SIDE ELEVATION

