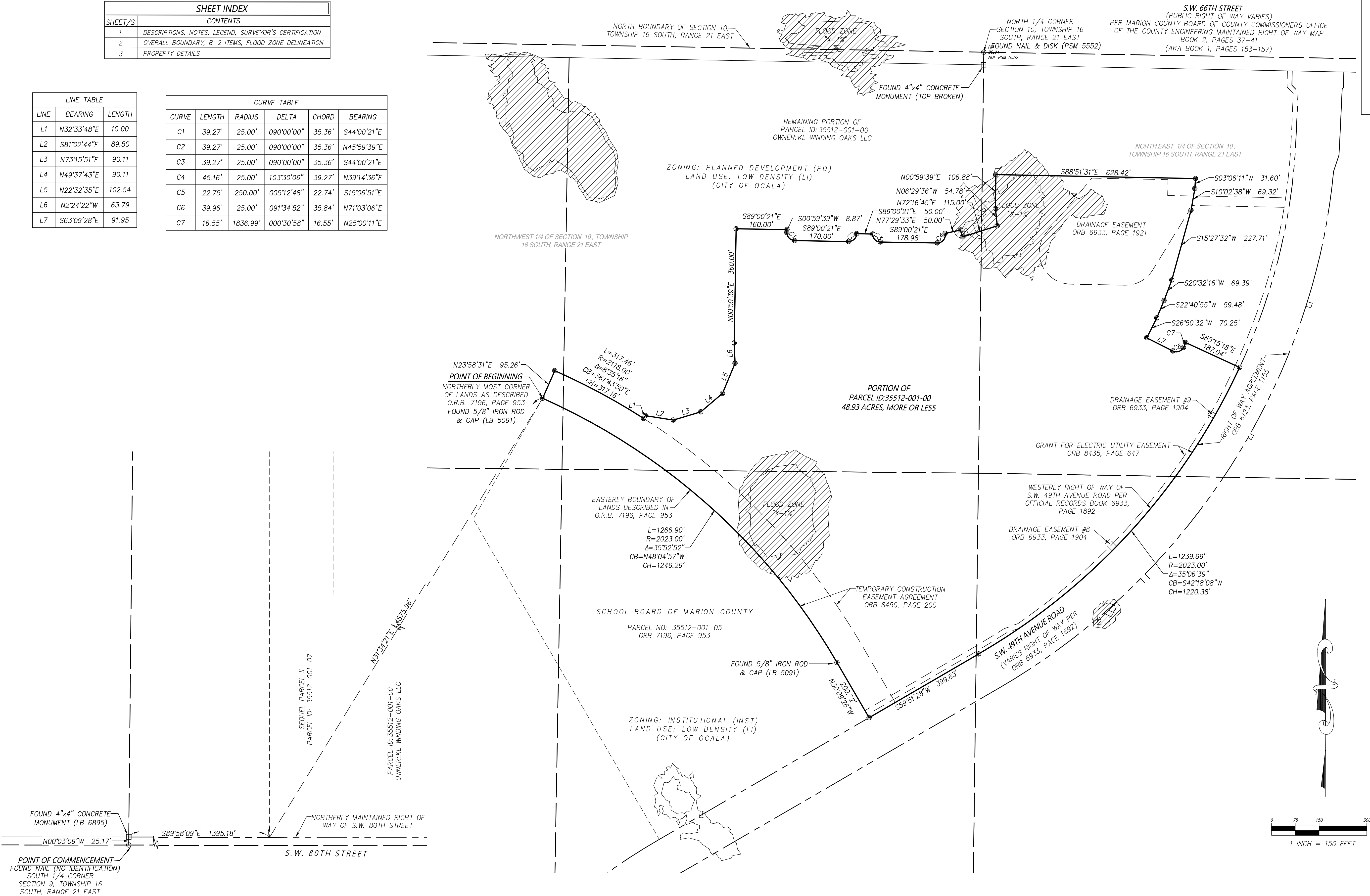


BOUNDARY SURVEY
"WINDING OAKS RESIDENTIAL PHASE 4A"
A PORTION OF SECTION 10, TOWNSHIP 16 SOUTH, RANGE 21 EAST
CITY OF OCALA
MARION COUNTY, FLORIDA

SHEET INDEX	
SHEET/S	CONTENTS
1	DESCRIPTIONS, NOTES, LEGEND, SURVEYOR'S CERTIFICATION
2	OVERALL BOUNDARY, B-2 ITEMS, FLOOD ZONE DELINEATION
3	PROPERTY DETAILS

LINE TABLE		
LINE	BEARING	LENGTH
L1	N32°33'48"E	10.00
L2	S81°02'44"E	89.50
L3	N73°15'51"E	90.11
L4	N49°37'43"E	90.11
L5	N22°32'35"E	102.54
L6	N2°24'22"W	63.79
L7	S63°09'28"E	91.95

CURVE TABLE					
CURVE	LENGTH	RADIUS	DELTA	CHORD	BEARING
C1	39.27'	25.00'	090°00'00"	35.36'	S44°00'21"E
C2	39.27'	25.00'	090°00'00"	35.36'	N45°59'39"E
C3	39.27'	25.00'	090°00'00"	35.36'	S44°00'21"E
C4	45.16'	25.00'	103°30'06"	39.27'	N39°14'36"E
C5	22.75'	250.00'	005°12'48"	22.74'	S15°06'51"E
C6	39.96'	25.00'	091°34'52"	35.84'	N71°03'06"E
C7	16.55'	1836.99'	000°30'58"	16.55'	N25°00'11"E



NO.	REVISIONS	BY	DATE
3.	REVISE BOUNDARY	M.A.	05/28/25
2.	REVISE BOUNDARY PER CITY COMMENTS	J.L.T.	04/17/25
1.	REVISE BOUNDARY FOR PHASE 4A	M.A.	01/16/24

DRAWN:	M.A.
REVISED:	
REVISED:	
CHECKED:	C.J.H.
APPROVED:	C.J.H.
SCALE:	1" = 100'

JCH
CONSULTING GROUP, INC.
LAND DEVELOPMENT SURVEYING & MAPPING
PLANNING, ENVIRONMENTAL & GIS
CORPORATE OFFICE: 1000 N.W. 10th Ave., Suite 1000
FORT LAUDERDALE, FL 33311
PHONE: 954.461.1234 FAX: 954.461.1235 www.jchgroup.com

BOUNDARY SURVEY
FOR:
KL WINDING OAKS LLC

REFERENCES:
15-5/62
16-2/13-28
21-6/52-54
25-7/12-5