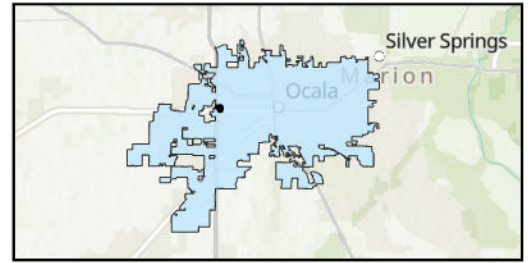
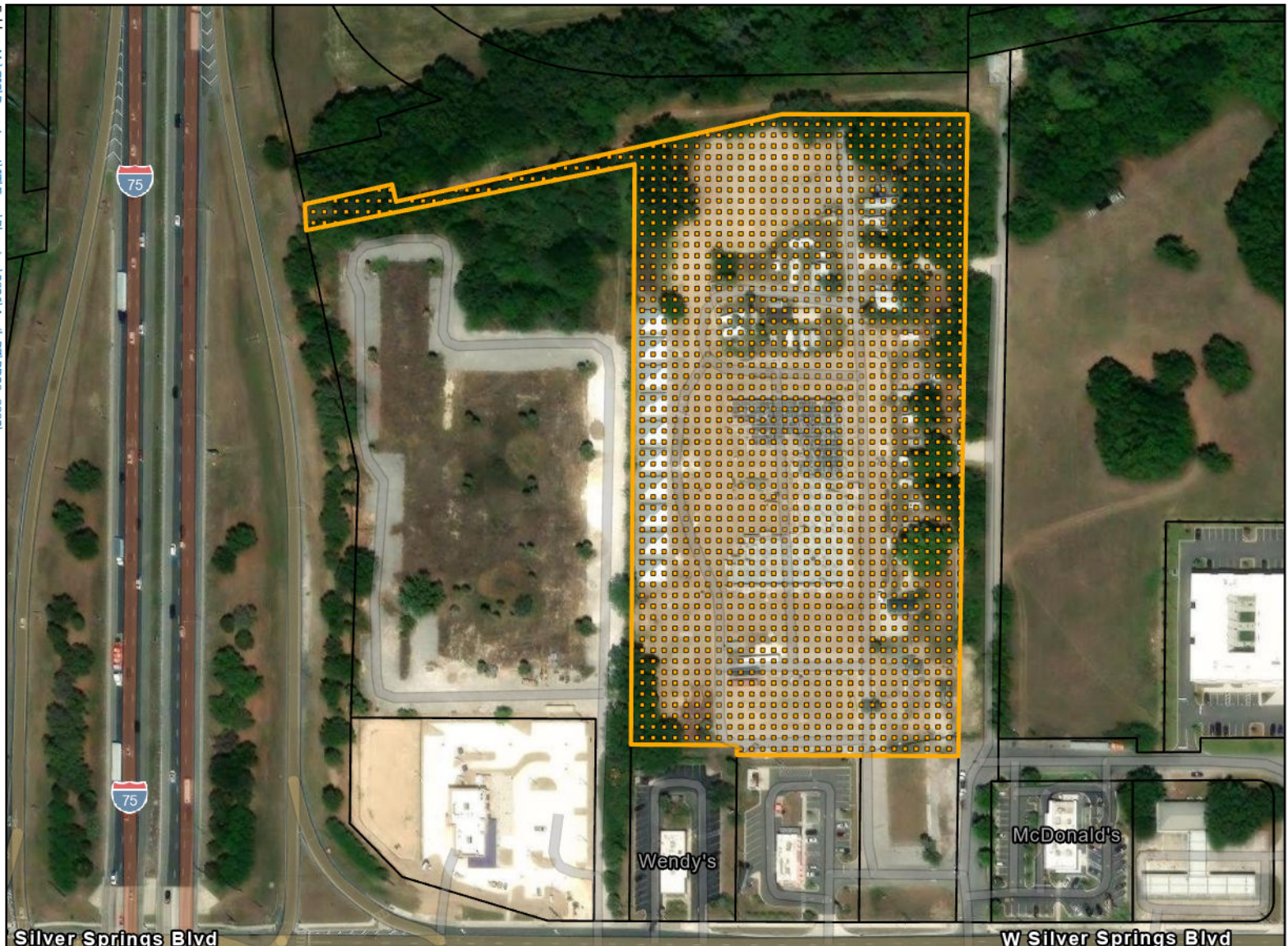


AERIAL MAP


Case Number: PD20-0003
Parcel: 22817-00-00
Property Size: Approximately 9.27 Acres
Land Use Designation: Employment Center
Zoning: PD, Planned Development
Proposal: Revision for additional units



Folder: M:\GIS\Department\IT\Evan\Planning\2026\April_PZ\PD20_0003\



Silver Springs Blvd W Silver Springs Blvd

 Subject Parcel

 Parcels

