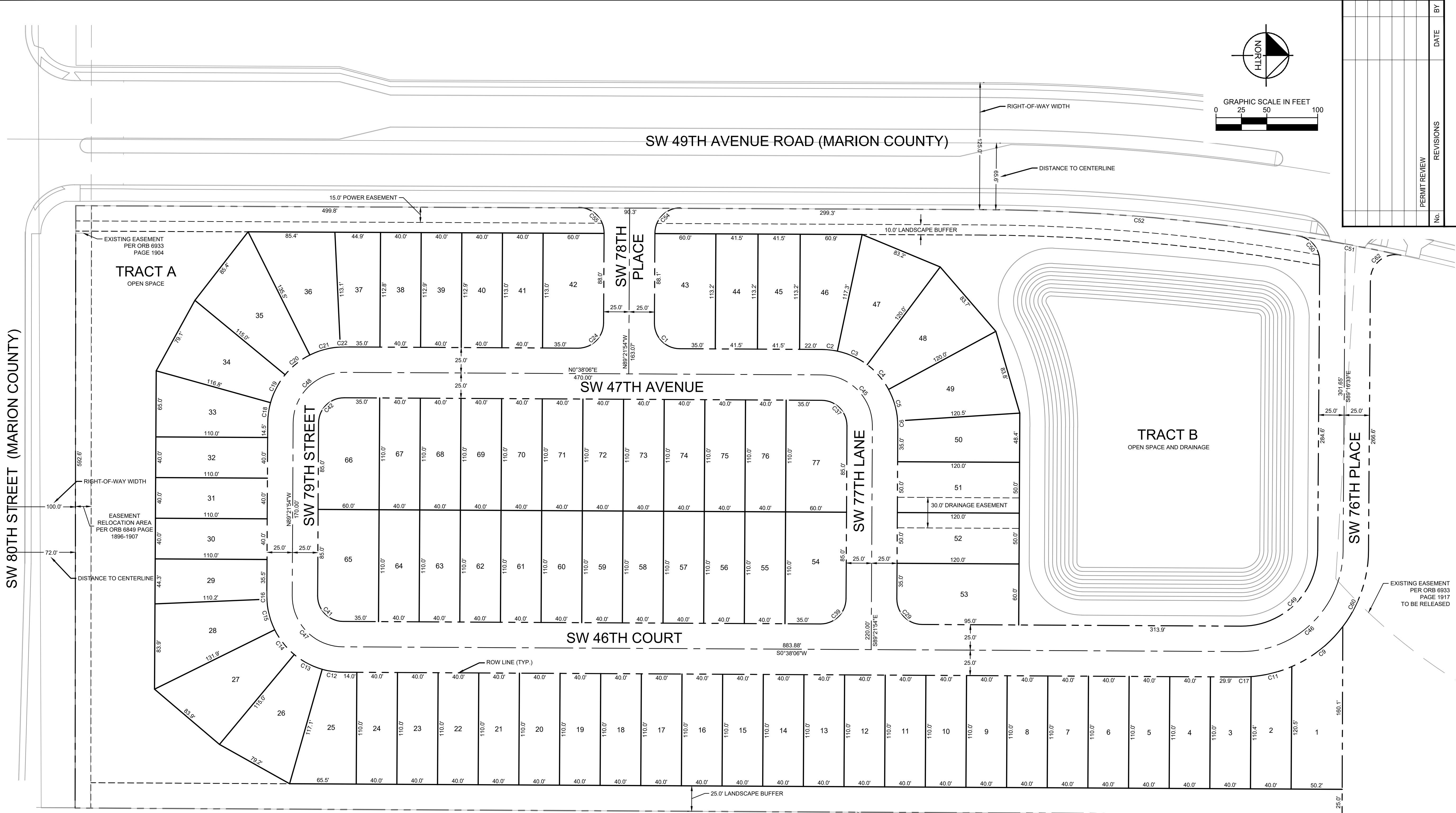
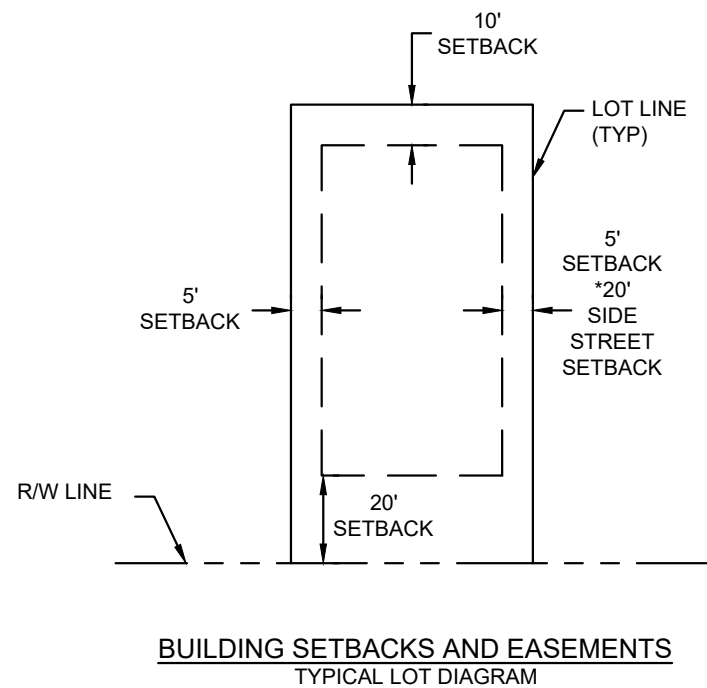


This document, together with the concepts and designs presented herein, as an instrument of service, is intended only for the specific purpose and client for which it was prepared. Reuse of and improper reliance on this document without written authorization and adaptation by Kimley-Horn and Associates, Inc. shall be without liability to Kimley-Horn and Associates, Inc.



CURVE TABLE						
CURVE	RADIUS	LENGTH	CHORD BEARING	CHORD	DELTA	TANGENT
C1	25.00'	39.27'	N45°38'06"E	35.36'	90°00'00"	25.00'
C2	75.00'	15.28'	N6°26'12"E	15.25'	11°40'11"	7.66'
C3	75.00'	32.46'	N24°42'18"E	32.21'	24°48'01"	16.49'
C4	75.00'	32.46'	N49°30'19"E	32.21'	24°48'01"	16.49'
C5	75.00'	32.46'	N74°18'20"E	32.21'	24°48'01"	16.49'
C6	75.00'	5.14'	N88°40'13"E	5.14'	3°55'46"	2.57'
C9	125.00'	64.55'	S37°46'39"E	63.83'	29°35'15"	33.01'
C11	125.00'	41.44'	S13°29'15"E	41.25'	18°59'34"	20.91'
C12	75.00'	20.39'	S8°25'29"W	20.33'	15°34'46"	10.26'
C13	75.00'	31.29'	S28°10'02"W	31.07'	23°54'19"	15.88'
C14	75.00'	31.29'	S52°04'21"W	31.07'	23°54'19"	15.88'
C15	75.00'	31.29'	S75°58'40"W	31.07'	23°54'19"	15.88'
C16	75.00'	3.54'	S89°16'58"W	3.54'	2°42'17"	1.77'
C17	125.00'	10.09'	S1°40'41"E	10.09'	4°37'34"	5.05'
C18	75.00'	19.98'	N81°43'53"W	19.93'	15°16'02"	10.05'
C19	75.00'	31.29'	N62°08'42"W	31.07'	23°54'19"	15.88'

CURVE TABLE						
CURVE	RADIUS	LENGTH	CHORD BEARING	CHORD	DELTA	TANGENT
C20	75.00'	31.29'	N38°14'23"W	31.07'	23°54'19"	15.88'
C21	75.00'	31.29'	N14°20'04"W	31.07'	23°54'19"	15.88'
C22	75.00'	3.95'	N0°52'24"W	3.95'	3°01'01"	1.98'
C24	25.00'	39.27'	N44°21'54"W	35.36'	90°00'00"	25.00'
C29	25.00'	39.27'	N45°38'06"E	35.36'	90°00'00"	25.00'
C37	25.00'	39.27'	S45°38'06"W	35.36'	90°00'00"	25.00'
C39	25.00'	39.27'	N44°21'54"W	35.36'	90°00'00"	25.00'
C41	25.00'	39.27'	N45°38'06"E	35.36'	90°00'00"	25.00'
C42	25.00'	39.27'	S44°21'54"E	35.36'	90°00'00"	25.00'
C51	2018.00'	102.91'	S10°58'01"W	102.89'	2°55'18"	51.46'
C52	2018.00'	315.08'	S5°02'00"W	314.76'	8°56'45"	157.86'
C60	125.00'	80.08'	N70°55'25"W	78.71'	36°42'16"	41.47'
C62	25.00'	44.38'	N38°25'26"W	38.78'	101°42'13"	30.71'



CALL 2 WORKING DAYS
BEFORE YOU DIG
IT'S THE LAW!
DIAL 811
Know what's
Call below.
before you dig.
SUNSHINE STATE ONE CALL OF FLORIDA, INC.

REVISIONS		DATE	BY
No.	PERMIT REVIEW		

Kimley»Horn
© 2023 KIMLEY-HORN AND ASSOCIATES, INC.
1700 SE 17TH STREET, SUITE 200, OCALA, FLORIDA 34471
PHONE 352-438-3000
WWW.KIMLEY-HORN.COM REGISTRY NO. 35106

LICENSED PROFESSIONAL
STEWART L. HILL
FLORIDA LICENSE NUMBER
79410

KHA PROJECT
142800009
DATE
DECEMBER 2023
SCALE
AS SHOWN
DESIGNED BY
KHA
DRAWN BY
KHA
CHECKED BY
KHA
DATE

GEOMETRY PLAN

**WINDING OAKS -
PHASE 2**
PREPARED FOR
D.R. HORTON, INC
FLORIDA
CITY OF OCALA

SHEET NUMBER
C003

