



City of Ocala
Community Redevelopment Agency
201 SE 3rd Street, Ocala, FL 34471

MEMORANDUM

DATE February 26, 2025

TO: East Ocala CRA Advisory Committee

FROM: Charlita R. Whitehead, Economic Development/Cultural Arts Project Coordinator,
Growth Management

RE: East Ocala CRA Residential Improvement Grant Program Grant Application
CRA25-0004

Address: 217 NE 11th Ave (Parcels: 2834-002-005)

Applicant: Robyn Noble/ Noble Haus Holdings LLC

Project: The applicant is requesting a grant to replace nine windows on the sides and back of the building.

A summary of the work and quotes received are presented in Table 1.

Table 1. Application summary.

| Work Item | 1 st Quote | 2 nd Quote (low quote) | Recommended Grant (75%) |
|----------------------|-----------------------|---|----------------------------|
| Replace nine windows | \$19,999 | \$15,275 | \$11,456 |

Findings and Conclusion:

- The windows in the front of the property have already been replaced. These nine windows will match the style and design of the new windows.
- The property was built in 1940.
- The improvements will increase energy efficiency and result in savings for the applicant. Per the applicant, "Many of the old windows are not in working condition and have cracks..."
- The project start date is June 2, 2025.
- The application meets the requirements and is eligible for grant consideration.

The Grant Review Committee (GRC) visited the property on February 18, 2025. The property is well maintained, and the two bids were found to be comparable.

Attached - Application, photos, cost estimates, and Marion County Property Appraiser's Property Report Card.



Image 1 – The front of the property from 11th St. facing East.



Image 2 – The design on the windows.

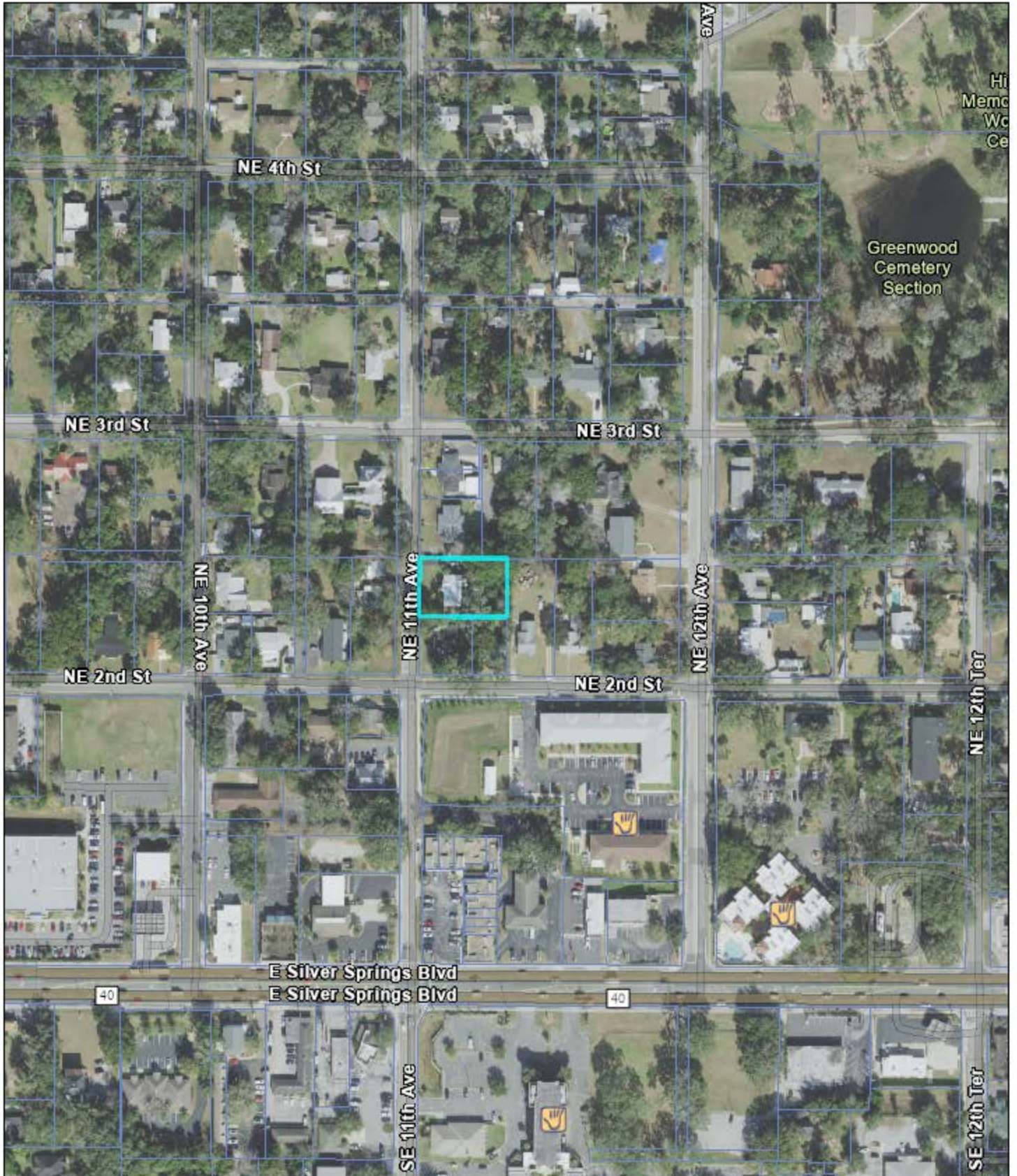


Image 3 – From the side of the property facing North.



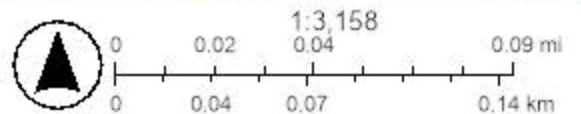
Image 4 – From the back of the property facing West.

2834-002-005 - AERIAL MAP



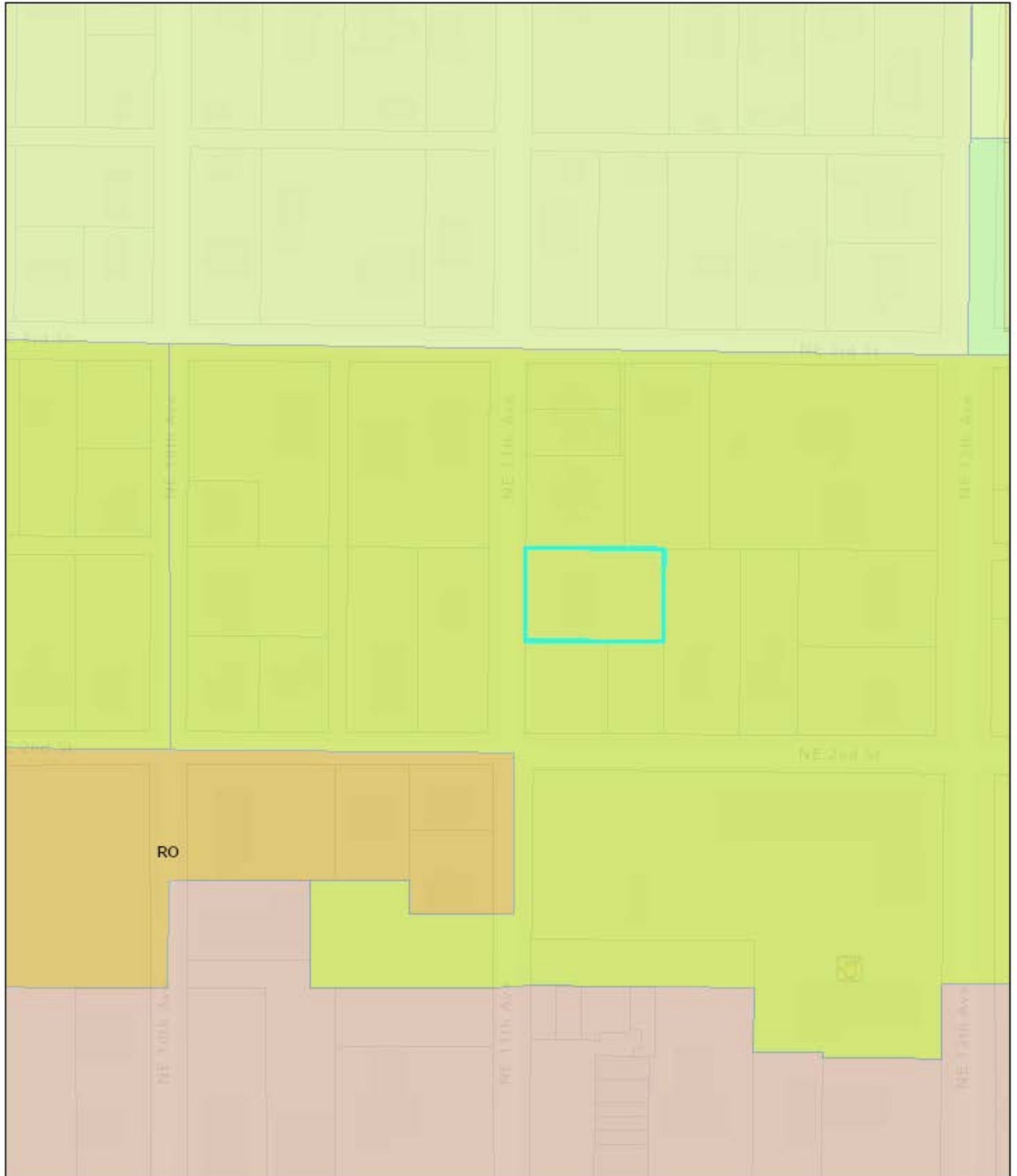
2/23/2025, 3:32:16 PM

-  Social Services
-  City Limits
-  Parcels



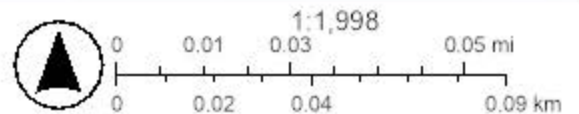
Maxar, Microsoft, Esri, Community Maps Contributors, Marion County Property Appraiser, FOEP, © OpenStreetMap, Microsoft, Esri, TomTom, Garmin, SafeGraph, GeoTechnologies, Inc, METI/NASA, USGS, EPA, NPS, US Census Bureau, USDA, USFWS

2834-002-005 - CASE MAP



2/23/2025, 3:30:18 PM

- | | |
|---------------------------------|--------------------------------------|
| Zoning | RO: Residential Office |
| B-2: Community Business | Community Redevelopment Areas |
| INST: Institutional | East Ocala CRA |
| R-1: Single Family Residential | Social Services |
| R-1A: Single Family Residential | City Limits |
| R-3: Multi-Family Residential | Parcels |



Esri, Community Maps Contributors, Marion County Property Appraiser, FDEP, © OpenStreetMap, Microsoft, Esri, TomTom, Garmin, SafeGraph, GeoTechnologies, Inc, MET/INASA, USGS, EPA, NPS, US Census Bureau, USDA, USFWS

REFERRAL: _____

INSTALLER: _____

Window World

Quote is good for 30 days

LIC. # CBC1258574

AMERICA'S EXTERIOR REMODELER

35 SW 57th Ave. • Ocala, Florida 34474 • Office (352) 690-2244 • Fax (352) 690-2245 • Gainesville (352) 375-1444

CUSTOMER: Dwayne CarterPHONE # 954-461-1055INSTALL ADDRESS: 217 NW 11th Ave

CELL # _____

CITY: OcalaZIP: 3465

WORK # _____

| WINDOWS | | WINDOW OPTIONS | |
|--|----------|---|-----------------|
| *DOUBLE HUNG* | | 9 PPG Solarban 70 Low-EE Elite Efficiency | \$ 165 |
| REGULAR SIZE 52' or less W x 64' or less H | \$ 385 | Argon Gas *Included with Low-EE Elite* | \$ 75 |
| LARGE SIZE > 64' Height | \$ 525 | Double locks for windows >27" | \$ 45 |
| *SLIDING WINDOW* | | Double Strength Glass | \$ 95 |
| > 54' H / < 54' H | | Foam Insulation on Jamb and Head | \$ 30 |
| 2 LITE SLIDER (S) < 90UI | \$ 765 | Lifetime Glass Breakage Warranty | \$ 125 |
| 2 LITE SLIDER (M) 90 - 124UI | \$ 885 | Half Screens | \$ 30 |
| 2 LITE SLIDER (L) > 124UI | \$ 985 | Full Screens | \$ 45 |
| 3 LITE SLIDER (M) < 120UI | \$ 1,485 | Colonial Grids Contoured or Flat | \$ 105 |
| 3 LITE SLIDER (L) > 120UI | \$ 1,565 | Colonial Grids for Shapes | \$ 250 |
| *PICTURE* | | Specialty Grids for Shapes | \$ 265 |
| PICTURE WINDOW SMALL 0 - 101 UI | \$ 415 | Simulated Divided Light | \$ 265 |
| PICTURE WINDOW MEDIUM 102 - 140 UI | \$ 535 | Wood Grain Int Slider/Fixed | \$ 180 |
| PICTURE WINDOW LARGE 141 - 154 UI | \$ 695 | Wood Grain Int DH | \$ 145 |
| *SPECIALTY* | | Color Ext Slider/Fixed | \$ 345 |
| SINGLE HUNG ARCH TOP 115UI / 48' MAX W | \$ 875 | Color Ext DH | \$ 285 |
| CASEMENT / AWNING <i>custom</i> | \$ 495 | Oriel/Cottage Style 40/60 or 60/40 | \$ 70 |
| 9 CUSTOM WINDOW <i>DH series</i> | \$ 1,200 | Tan or Clay | \$ 115 |
| CUSTOM WINDOW | \$ | Obscured Glass Rain or Frosted (BSO) (TSO) | \$ 65 |
| WINDOW COLOR INSIDE: _____ OUTSIDE: _____ | | Tint Gray or Bronze | \$ 95 |
| MISCELLANEOUS | | PATIO DOORS | |
| Custom Exterior Cap & Wrap | \$ 95 | *VINYL SLIDING GLASS* | |
| Custom J Channel (WHITE) | \$ 90 | 8ft Tall \$ / Standard \$ | |
| 7 Window Removal & Labor | \$ 165 | Rolling Patio Door 5' *58 5/8 x 79 1/2 | \$2,125 \$1,625 |
| Steel or Cut-Out Window Removal | \$ 30 | Rolling Patio Door 6' *70 5/8 x 79 1/2 | \$2,525 \$1,725 |
| 2nd Story Window Removal | \$ 30 | Rolling Patio Door 8' *94 1/4 x 79 1/2 | \$3,125 \$2,125 |
| Cut-Out Door Removal | \$ 110 | Rolling Patio Door 9' *105 1/2 x 79 1/2 | \$3,525 \$2,525 |
| Mull to Form Multi-unit. | \$ 105 | Rolling Patio Door 12' *139 1/2 x 79 1/2 | N/A \$4,000 |
| 2 Tempered glass (per sash) | \$ 125 | Specialty/Custom Patio Door [SIZE] x | \$ |
| Temper Specialty - \$18 per sq ft. | \$ | Screen For Patio Door | \$ 130 |
| Repair Sill or Jamb | \$ 100 | PPG Solarban 70 Low-EE Elite/Argon Gas (per pan) | \$ 165 |
| Remove Storm Windows | \$ 30 | Colonial Grids for Patio Doors Flat or Contour | \$ 245 |
| 9 Ext/Int Trim to Code | \$ 75 | Removal and install per 2 panels \$115 ea. Additional | \$ 315 |
| Ext/Int Trim to Code - Stucco Flange | \$ 115 | Trim To Code | \$ 190 |
| Custom Exterior Trim | \$ 100 | Wood Grain Interior | \$ 475 |
| Awnings - (Remove) (Replace) | \$ 35 | Exterior Designer Colors | \$ 765 |
| Curtain/Blind (Remove) (Replace) | \$ 15 | Tan or Clay | \$ 475 |
| Nail Fin / Wood buck | \$ 35 | Blinds Between the Glass - Per Panel | \$ 825 |
| | | Storm or Cabana Door | \$ |

You the buyers are responsible for the removal and installation of any existing security system, burglar bars, drapes, blinds, A/C. You the buyer may cancel this transaction at any time prior to midnight of the third business day after the date of this transaction. Notice of cancellation must be in writing postmarked no later than midnight pm the following third business day. **THIS IS A CUSTOM ORDER**
 You the buyer agrees to make themselves available to the city and or county inspectors for a final inspection.

NO EXTRA WORK IF NOT IN WRITING!

CUSTOMER AGREES TO THE TERMS OF PAYMENT AS FOLLOWS:

Estimated time of Install: 4 months

Please see reverse side for additional terms & conditions

Buyer agrees that HE/SHE has read and understands all terms and conditions on front and back of this contract, and agrees to each and every term and condition.

EXTRA LABOR \$ _____

SALES TAX \$ 8

LAND DISPOSAL FEES \$ 200

PERMITS & FEES \$ 275

TOTAL AMOUNT \$ 15,275

(CUSTOM ORDER) 50 % DEPOSIT \$ _____

REMAINING BALANCE UPON INSTALLATION \$ _____

SALESPERSON: _____

DATE: _____

OWNER: _____

DATE: _____

This Window World® Franchise is independently owned and operated by Window World of FL, Inc. d/b/a Window World of Ocala, under license from Window World, Inc. White Copy - Original Yellow Copy - Customer

Window World

6000 SERIES
DOUBLE-HUNG & SLIDING WINDOWS



**6000 Series
Double-Hung Windows**
in White. Colonial Grids
in Black.




AMERICA'S EXTERIOR REMODELER

Improving Homes. Changing Lives.

6000 SERIES

DOUBLE-HUNG & SLIDING WINDOWS



**6000 Series
Double-Hung Windows**
in Cherry Woodgrain with
Colonial Grids



Sash tilt in for easy cleaning.



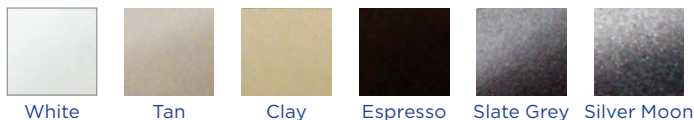
Blinds-between-the-glass available.

With quality craftsmanship and beautifully detailed decorative options, Window World's 6000 Series windows offer the freedom to express your own personal style.

Built to last, our architecturally-accurate beveled vinyl frame design replicates a traditional wood appearance, and is virtually maintenance free. Warm-edge technology is achieved with efficiency features like optimum-sized insulating glass units and a unique spacer design. In addition, our comprehensive warranty ensures a lifetime of dependability. With two operable sash, Window World's 6000 Series Double-Hung Windows are easily cleaned from inside the home for the perfect combination of style and efficiency.

Optional Blinds-Between-the-Glass

Internal, hermetically-sealed mini blinds add privacy and security, while helping control light and solar heat gain. Because they are located inside the sealed glass unit, the blinds will never need dusting and will not become damaged over time. The blinds raise, lower, and tilt with a single handle and are available in a variety of colors.



Limitations: Blinds are not available with the following windows and options; Slider windows, Triple pane, SDL Grids, Impact Windows. Can be ordered for one sash only, specify top or bottom. Window size will limit blind availability. Please contact your Design Consultant for more information.

LIFETIME
LIMITED WARRANTY*

Features

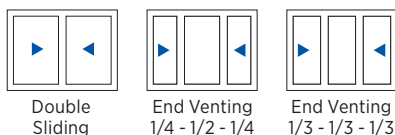
- 1 Frames and sash are welded at mitered corners – the strongest type of construction on the market.
- 2 Vinyl profiles feature internal divided chambers for added rigidity and enhanced thermal performance.
- 3 Double-strength insulating glass unit is 3/4" – the optimum size for dependable energy efficiency.
- 4 Standard SolarZone® glass enhances energy performance.
- 5 Glass edges are positioned 1/2" into the sash to help maintain even temperatures.
- 6 U-channel spacer design is more thermally efficient than traditional box spacers because it weakens energy currents as they are forced to travel an extended distance.
- 7 Meeting rail interlocks around dual lines of weatherstripping guard against drafts.
- 8 Sloped sill design prevents water from pooling during heavy rains.
- 9 Multiple weatherseals around each sash reduce drafts.
- 10 A closed-cell foam barrier seal at the sill blocks water penetration.
- 11 Lift rails are molded into the sash and will not loosen or break off.
- 12 Streamlined composite cam locks are strong and color-matched, with additional decorative finishes also available.



Sliding Window Features

- Sash slide easily on corrosion-resistant nylon rollers and a multi-stepped vinyl insert.
- Multiple Sliding Window configurations available.

Sliding Window Configurations



SolarZone® TG2 and TG3 Triple-pane Glass Package

In addition to excellent energy efficiency year round, triple-pane glass also provides added security, noise reduction, and reduces condensation build-up. Contact your Window World design consultant for more details.



SolarZone®

Window World 6000 Series SolarZone® Insulated Glass Packages with Low-E and Argon glass help you save on heating and cooling costs while also keeping your home more comfortable. During colder months, SolarZone® provides thermal protection to keep heated air inside. While during warmer months, SolarZone® reduces solar heat gain, lowering the inside glass temperature and helping your home stay cool.

| ENERGY EFFICIENT PERFORMANCE | | | | |
|------------------------------|----------|------|---------|------|
| DOUBLE-HUNG | U-FACTOR | SHGC | R-VALUE | VT |
| Clear Glass | 0.45 | 0.58 | 2.21 | 0.60 |
| SolarZone® | 0.29 | 0.20 | 3.49 | 0.47 |
| SolarZone® SF | 0.25 | 0.20 | 4.00 | 0.46 |
| SolarZone® TG2 | 0.23 | 0.18 | 4.35 | 0.34 |
| SolarZone® TG3 | 0.22 | 0.24 | 4.55 | 0.44 |
| SLIDING WINDOW | U-FACTOR | SHGC | R-VALUE | VT |
| Clear Glass | 0.45 | 0.56 | 2.22 | 0.58 |
| SolarZone® | 0.29 | 0.20 | 3.45 | 0.45 |
| SolarZone® SF | 0.26 | 0.19 | 3.85 | 0.44 |
| SolarZone® TG2 | 0.24 | 0.17 | 4.17 | 0.33 |
| SolarZone® TG3 | 0.22 | 0.23 | 4.55 | 0.42 |

SolarZone®: Double-Strength Argon filled glass with spectrally selective coating on surface 2.
SolarZone® SF: Double-Strength Argon filled glass with spectrally selective coatings located on surfaces 2 & 4.
SolarZone® TG2: 3-panes of Double-Strength Argon filled glass with spectrally selective coatings located on surfaces 2 & 5.
 Values based on Double-Strength glass with SolarZone® without grids.
SolarZone® TG3: 3-panes of Double-Strength Argon filled glass with spectrally selective coatings located on surfaces 2, 4 & 6.
 Values based on Double-Strength glass with SolarZone® without grids. Other glass options available upon request.





Interior/Exterior Colors



White

Tan

Clay

Black*

*Black interior available in laminate only.

Interior Woodgrains



White Oak

Light Oak

Dark Oak

Cherry

Exterior Laminate Colors



Bronze

Brown

Black

Earthtone



Hunter Green

Silver

Privacy Glass



Obscure



Rain

Tinted Glass



Tinted Grey



Tinted Bronze

Hardware



White

Tan

Clay

Black*



Satin Nickel

Bright Brass

Antique Brass

Bronze



DualTech™ Lock Options Available

*Black hardware standard with Black interior and Black exterior.

Limitations: Exterior colored laminates require additional lead time. Not all interior/exterior colors and grid combinations available. Grids are available in all colors, but not all exterior grid colors available with all interior colors. DualTech™ lock available on Double-Hung and Sliding windows. Contact your Window World design consultant for more details.

Interior Colors

6000 Series windows are available in three extruded colors to blend with virtually any home exterior color palette. The color is molded through the vinyl material so it will not fade or discolor over time. In addition to White, Tan, and Clay extruded colors, Black interior laminate also available.

Interior Woodgrains

6000 Series windows offer four optional woodgrain laminate choices. Not all woodgrains available with all exterior laminate colors. Please see limitations below, or contact your Window World design consultant for more detail.

Exterior Laminate Colors

Expanding your design options, 6000 Series windows are also available in six additional exterior colors.

Privacy & Tinted Glass

Choose from two shades of optional tinted glass or from two popular patterns of privacy glass. While tinted glass does not decrease visibility, privacy glass reduces clear visibility while allowing light to pass through.

Hardware

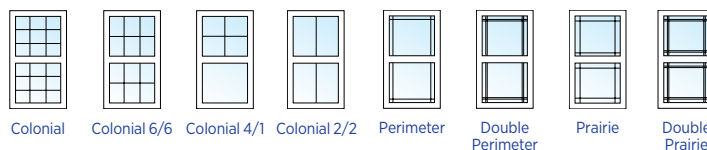
Hardware is color matched to the interior window color as a standard feature. Optional plated hardware is also available in four finishes - Satin Nickel, Bright Brass, Antique Brass, and Bronze.

DualTech™ Lock Option

Available on the 6000 Series Double-Hung and Sliding Windows, the DualTech™ lock provides more strength and security than traditional locking mechanisms, as well as a fast one-step route for latch & lock. In addition, the streamlined lock allows faster access when tilting the sash inward for cleaning, by moving the lock handle past the unlock point to the “wash” indicator. Contact your sales representative for more detail.

Grids

Optional 5/8” grids are located inside the glass unit to provide a smooth cleaning surface, and color matched to the exterior window color. Contoured and flat grids are available in three popular patterns - Colonial, Perimeter, and Prairie.



Colonial

Colonial 6/6

Colonial 4/1

Colonial 2/2

Perimeter

Double Perimeter

Prairie

Double Prairie



NewSouth Window of Orlando
820 E Altamonte Dr
Altamonte Springs, FL 32701
407-261-2277
www.NewSouthWindow.com
SCC131152826

DEWAYNE ROBIN CARTER

217 NE 11TH AVENUE
OCALA FL 34470

954-461-1055
noblehausinc@gmail.com
173784

Date: 11/25/2024
Rep: Warren Campbell

WHOLESALE & RETAIL WINDOW AND DOOR CONTRACT

Replacement Windows - Entry & Patio Doors - Impact Resistant Windows & Doors

NewSouth Window Solutions agrees to measure, manufacture, furnish, install and service the following products for the amount STIPULATED BELOW. All NewSouth windows include an insulated glass unit with double pane, eVantage glass, argon gas, and 12 point fusion welded corners (Not applicable to ECO products). NewSouth products and Florida Product Approvals are guaranteed to comply with code requirements for the specific location of the home. Thank you for your business.

The terms of the Lifetime Limited Transferable Warranty are expressly and fully incorporated into the contract, including but not limited to the limitation of remedies and exclusions of consequential damages contained therein.

Secondary Initials

Are Co-Signer Initials Needed?

NO

Windows Package

Impact White

Window



Window Icon
Window Style
SH9000 Single Hung Equal Split

Location Kitchen
Height 48
Inside Color White
Glass Type eVantage
Grids Prairie Grids- Flat

Window Number 1
Window Brand Impact White
Width 28
Total UI 76
Outside Color White
Screen Type Half

Window



Window Icon
Window Style
SH9000 Single Hung Equal Split

Location Master
Height 62
Inside Color White
Glass Type eVantage

Window Number 2
Window Brand Impact White
Width 34
Total UI 96
Outside Color White
Screen Type Half

Window





Window Icon
Window Style
SH9000 Single Hung Equal Split

Location Master
Height 62
Inside Color White
Glass Type eVantage

Window Number 3
Window Brand Impact White
Width 34
Total UI 96
Outside Color White
Screen Type Half

This space intentionally left blank

| | | | | |
|--|--------------------------------|----------|---------------|--------------|
| <div>Window</div>  | Window Icon | | Window Number | 4 |
| | Window Style | | Window Brand | Impact White |
| | SH9000 Single Hung Equal Split | | Width | 28 |
| | Location | Bathroom | Total UI | 74 |
| | Height | 46 | Outside Color | White |
| | Inside Color | White | Screen Type | Half |
| | Glass Type | eVantage | | |
| <div>Window</div>  | Window Icon | | Window Number | 5 |
| | Window Style | | Window Brand | Impact White |
| | SH9000 Single Hung Equal Split | | Width | 34 |
| | Location | Bed 2 | Total UI | 96 |
| | Height | 62 | Outside Color | White |
| | Inside Color | White | Screen Type | Half |
| | Glass Type | eVantage | | |
| <div>Window</div>  | Window Icon | | Window Number | 6 |
| | Window Style | | Window Brand | Impact White |
| | SH9000 Single Hung Equal Split | | Width | 34 |
| | Location | Bed 2 | Total UI | 96 |
| | Height | 62 | Outside Color | White |
| | Inside Color | White | Screen Type | Half |
| | Glass Type | eVantage | | |
| <div>Window</div>  | Window Icon | | Window Number | 7 |
| | Window Style | | Window Brand | Impact White |
| | SH9000 Single Hung Equal Split | | Width | 34 |
| | Location | Bed 2 | Total UI | 96 |
| | Height | 62 | Outside Color | White |
| | Inside Color | White | Screen Type | Half |
| | Glass Type | eVantage | | |
| <div>Window</div>  | Window Icon | | Window Number | 8 |
| | Window Style | | Window Brand | Impact White |
| | SH9000 Single Hung Equal Split | | Width | 34 |
| | Location | Bed 2 | Total UI | 96 |
| | Height | 62 | Outside Color | White |
| | Inside Color | White | Screen Type | Half |
| | Glass Type | eVantage | | |

This space intentionally left blank

Window



Window Icon
Window Style
SH9000 Single Hung Equal Split
Location
Height
Inside Color
Glass Type

Utility
62
White
eVantage

Window Number
Window Brand
Width
Total UI
Outside Color
Screen Type

9
Impact White
34
96
White
Half

Contract Totals

| | |
|------------------------|---|
| Number of Windows | 9 |
| Number of Patio Doors | 0 |
| Number of Entry Doors | 0 |
| Number of Garage Doors | 0 |

Additional Details

Customer has applied for and Ocala CRA Grant they're waiting for the approval that will fund a portion of the project back to them once they get fully approved. They will call to move forward.

This space intentionally left blank

Lead Safety

Was the home built prior to 1978? Yes

Pre-Renovation Form

If yes, the undersigned agree to the terms and conditions of the NewSouth Lead Safe Work Practices Addendum. If house tests positive for lead, and additional \$85 per window will be added to the balance.

This sample form may be used by renovation firms to document compliance with the Federal pre-renovation education and renovation, repair, and painting regulations.

Occupant Confirmation of Pamphlet Receipt

I have received a copy of the lead hazard information pamphlet informing me of the potential risk of the lead hazard exposure from renovation activity to be performed in my dwelling unit. I received this pamphlet before the work began.

Dewayne Carter

DEWAYNE ROBIN CARTER

11/25/2024

Date

Contract Payments

| | |
|---|-----------------------|
| Sales Price | \$19,999 |
| Down Payment- 1st Installment | \$2,000 |
| Balance Due Prior to Inspection - Final Installment | \$17,999 |
| Balance Due Form of Payment | Finance |
| Finance Company | Synchrony |
| Finance Plan | 24 months no interest |

Estimated Completion Date

From Date Above, Approximate Start Date Is: 8 - 12 Weeks

Buyer hereby agrees that the above dates are estimates and are not material terms of this contract. NewSouth is released from, and shall not be held liable for, any damages incurred or to be incurred by the buyer which arise from or are caused by delays and consequential damages in NewSouth's performance of its contractual obligations stated herein.

(Customer's Initials) *DC*

HOA Information

Is there HOA? No

(Customer's Initials) *DC*

This space intentionally left blank

217 NE 11TH AVE - 01/23/2025

Applicant Information

Applicant / Primary Contact Information

| | |
|-------------|----------------------------|
| Name | Type |
| Robyn Noble | Residential Property Owner |

Questions

1. How long have you owned / lived at the current location?
- Ans. 3 years

Property Information

| | | |
|--------------------------|-----------------------------------|---|
| Parcel Id | Parcel Address | |
| 2834-002-005 | 217 NE 11TH AVE, OCALA, FL, 34471 | |
| Last Assessment | Previous Year Assessment | Districts |
| 9/15/2023 - \$143,926.00 | No information available | East Ocala CRA, Ocala Wide District, OEU District |

Project Details

Details

Proposed Use
No information entered No
information entered

Public Improvements
No information entered

**Estimated Future Assessed
Value**
No information entered

Proposed Square Footage
No information entered

Improvements Requested

Estimated Future Tax
No information entered

Construction Activities - 217 NE 11TH AVE OCALA FL 34471

Rennovations

✓ Exterior - Facade - Windows

Eligible Costs

Exterior Painting

Estimated cost of Paint \$0.00

Sub Total: \$0.00

Repair/repalcement of exterior windows and/or doors

Estimated cost of windows \$19,000.00

Estimated cost of doors \$0.00

Other \$0.00

Sub Total: \$19,000.00

Demolition

Estimated cost of demoliton \$0.00
and cleanup

Sub Total: \$0.00

New landscaping (only include areas visible from the street/sidewalk)

Estimated cost of
landscaping \$0.00

Sub Total: \$0.00

Fencing (sides and rear only)

Estimated cost of fencing \$0.00

Sub Total: \$0.00

Reroofing

Estimated cost of reroofing \$0.00

Sub Total: \$0.00

Weatherization (HVAC and Insulation)

Estimated cost of HVAC \$0.00

New Construction

Should not include building permit and impact fees.

| | |
|---|--------|
| Estimated cost of insulation improvements | \$0.00 |
| Other | \$0.00 |
| Sub Total: | \$0.00 |

| | |
|-------------------------------------|--------|
| Estimated cost of new construction. | \$0.00 |
| Sub Total: | \$0.00 |

Financing Details

Fund Request

| | |
|--------------------------------|------------------------|
| Funding Request | Reimbursement |
| Eligible Costs Total | \$19,000.00 |
| Total Estimated Project Cost | \$19,000.00 |
| Total Funding Amount Requested | No information entered |

Funding Source - Indicate how you intend to fund the project.
 Note - Applicant will cover all upfront costs; the incentive will be provided as a reimbursement after project completion.

| | |
|--------------------|-------------|
| Grants | \$14,250.00 |
| Personal Savings | \$5,500.00 |
| Loan / Credit Card | \$0.00 |
| Other | \$0.00 |
| Sub Total | \$19,750.00 |

Project Description and Bids

Questions

1. Please explain the purpose of and need for the proposed improvements.

Ans. We are wanting to replace the old original 1938 windows to help with energy savings and security. Many of the old windows are not in working condition and have cracks and are in poor condition.

2. Will the proposed improvements be made without the assistance of the grant program? If not, please explain.

Ans. No

3. If not, please explain

Ans. It will be a struggle to replace all windows with the associated costs. We did replace some of the front windows as they were in the worst shape and we had to replace those right away after purchasing the house. It had not been well maintained. We have been fixing things as we can.

4. If necessary, attach additional documentation addressing the above.

Ans. New South window quote.pdf

5. Bid 1 Amount

Ans. 19,999.00

6. Bid 1 Upload

Ans. New South window quote.pdf

7. Bid 2 Amount

Ans. 15,275.00

8. Bid 2 Upload

Ans. window world quote.png

Timeline

Anticipated start date

Date

06/02/2025

Description

We were told approximately 4 months to start

Anticipated completion date

Date

06/08/2025

Description

Estimated date of the completion of the project

Parties

Authorized Representative

Business Name

No information entered

EIN

No information entered

First Name

Dewayne

Last Name

Carter

Phone Number

9544611055

Email

No information entered

Address

No information entered

Documentation Collection

Documents

1. Name: IMG_20241125_141250278_HDR.jpg

Uploaded Date: 1/23/2025 8:43:32 PM
2. Name: IMG_20241125_141206573.jpg

Uploaded Date: 1/23/2025 8:43:33 PM
3. Name: IMG_20241125_141212999_HDR.jpg

Uploaded Date: 1/23/2025 8:44:19 PM
4. Name: IMG_20241125_141253234.jpg

Uploaded Date: 1/23/2025 8:45:14 PM

Questions

1. Document Checklist

Ans. Color photographs of the existing conditions,At least 2 competitive bid proposals from contractors (licensed within the City of Ocala),Any other documentation necessary to illustrate the visual impact of the proposed project,Project budget, showing detailed estimates for all work items,Project Schedule

Declarations

A handwritten signature in black ink, appearing to read "Robyn Noble". The signature is fluid and cursive, with the first name "Robyn" and last name "Noble" clearly distinguishable.

Name: Robyn Noble / Dewayne Carter

Date: 01/23/2025

Made in Florida, For Florida Homes, By Florida Workers



Windows made specifically for the Florida climate

NewSouth Windows are made right here in our Florida factory, so you get windows at **true** factory direct prices. The benefit is that you cut out the middleman and his mark up. The result is that you invest directly in the quality of the window and not the typical layers of re-sellers and their margins.

We install your windows into your home, so it's hassle free. Lastly, we guarantee the window and the installation for life!

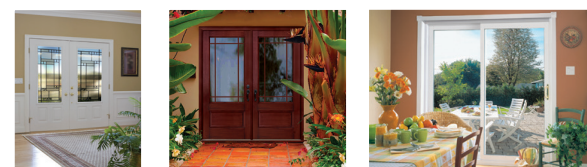
We call that the NewSouth Window Solution, you'll call it the last window you'll ever buy.



Doors that offer security and style

Sliding patio doors, entry doors and french doors

Available in
both Impact
Resistant
and Non-Impact
Options



NewSouth's Sliding Patio Doors

- Security and tamper resistance- with dual multi-point locking system
- Custom manufactured in many sizes
- Easy operation- dual tandem rollers and stainless steel ball bearings for easy operation
- Durable heavy duty screen with memory screen coating that maintains it's form
- Energy efficient- and exceeds Florida Energy Star with NewSouth's eVantage 366 low-E glass.
- Available as custom stacked or as a pocket door
- Aluminum reinforced sashes for strength
- Structurally fastened sashes and welded master frames

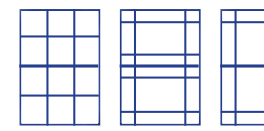
NewSouth also offers Entry Doors and French Doors

- 100% Fiberglass Entry Doors
- Surface can be painted or stained to match your design options
- Side-lites and transoms available
- Glass options to suit your home's architecture

Design Options



White Bronze Tan



Colonial Prairie Open Prairie

Color

Core Colors include white, tan and bronze exterior with white or tan interior.

Grids

Standard grid patterns are colonial, prairie and open prairie. Custom patterns and single sash options available.

Styles

Find a window style to suit the style of your home. NewSouth will custom make your windows specifically for you.



Double Hung Window Single Hung Window Horizontal Sliding Window Picture Window Circle Top and Shape Windows

Tampa Bay

10741 Crossroads Commerce Blvd.
Tampa, 33610
(813) 626-6000

Orlando

820 E. Altamonte Dr.
Altamonte Springs, 32701
(407) 261-2277

Sarasota

5249 S. Tamiami Trail
Sarasota, 34231
(941) 925-4000

West Palm Beach

2526 Okeechobee Blvd.
West Palm Beach, 34231
(561) 712-9000

FT. Lauderdale

1401 South State Road 7
N. Lauderdale, 33068
(954) 935-8300

Jacksonville

8590 Philips Highway
Jacksonville, 32256
(904) 717-5400

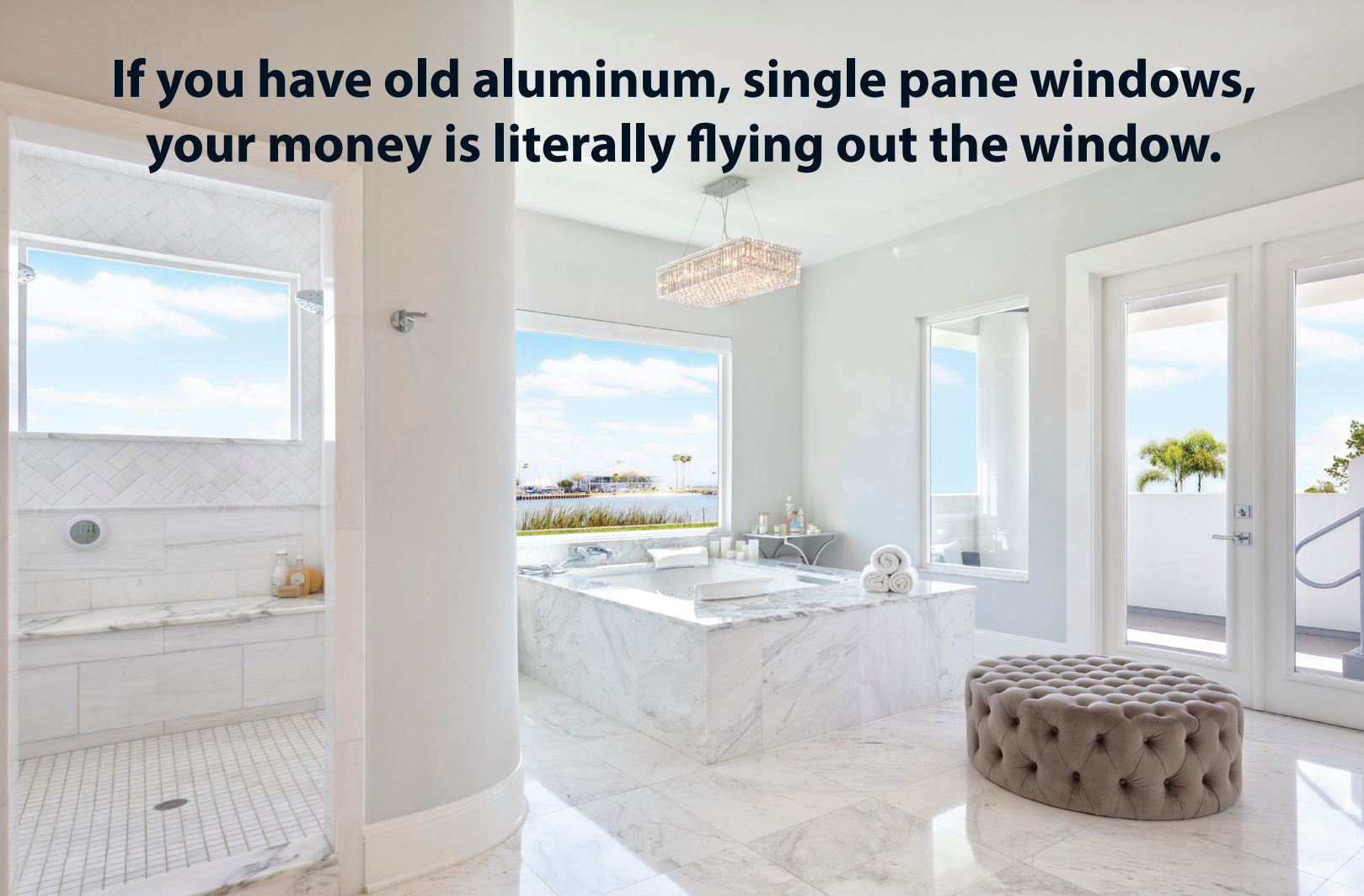


Lic #
CRC-1330822
SCC-131151763
CRC-1331905



We Manufacture, We Install, We Guarantee

If you have old aluminum, single pane windows, your money is literally flying out the window.



Our NewSouth Vantage™ Windows will not only save you energy and money, but will also add storm protection, security, and curb appeal to your home.

You'll wonder why you waited so long.

eVantage™

Award Winning Energy Savings

The eVantage™ Window is a cutting edge, award winning window designed for maximum energy efficiency, performance and strength. The “e” represents **energy efficient, economical, ecological and ease of use.** Manufactured with a unique technology that reduces energy transfer at the glass edge, and the best Low-E glass on the market, the eVantage offers superior energy efficiency which leads to energy savings.



Do you have old aluminum or wooden single pane windows? Ever feel like you can't get your house cool? You are literally wasting thousands of dollars year to year as air conditioning escapes from your home. This is bad for the environment and bad for your wallet. Stop the waste with eVantage.

iVantage™ 9000



Impact Resist Window

Energy Efficient + Hurricane Rated = You get the best of both worlds. No need to sacrifice one for the other.

Designed and tested to withstand the storms of South Florida, and approved to *Miami-Dade's high velocity hurricane zone (HVHZ) standards*, the iVantage window offers protection and strength when you need it most. This protection can decrease your insurance rates, protect your home and family, and give you peace of mind during the stormy seasons.

Laminated glass in the iVantage Window is designed to resist penetration, thus preventing flying debris from entering your home. In addition, the entire sash frame is fully reinforced with high grade, ultimate tensile strength aluminum for consistent performance under pressure.

Beauty as well as brains and brawn! The Vantage windows have a unique and particular visual appeal that is unique in comparison to other impact windows. The mill-work duplicated exterior frame and the large viewing area offer a beautiful curb-side look that does not block your view.



A beautiful window changes your entire outlook

The Benefits of Better Glass

Because glass makes up the largest area of your window, it is the most important component to consider when replacing your windows.

With NewSouth's eVantage™ 366 Glass, you get the best Low E glass that is available, combined with NewSouth's exclusive, energy savings technology. The result:

1. A cooler more comfortable home
2. Better energy ratings means energy savings and money savings for you
3. Protect your furnishings from fading
4. Increase the life of your air conditioning units
5. Reduce the carbon footprint your home imposes on the environment.

All of this is standard, at factory direct prices, with no extra charges for you.



Cut Out the Middleman

When you buy direct from our Florida NewSouth factory, you eliminate many layers of markups by dealers, wholesalers, distributors, suppliers and retailers. We pass the savings onto you, and you get a better window. The end result? You get more window for LESS MONEY!

Worry Free

Relax, Florida licensed, experienced window installers will take care of everything. Trained, courteous and mindful of your home, these professionals often complete your install within a few days. And NewSouth takes responsibility for the entire process. So easy for you, you'll wonder why you waited.

Lifetime Warranty

The entire window and the installation is covered with one of the best warranties in the industry. It's an unconditional, non-prorated, lifetime warranty for as long as you own your home... plus 1 year. If at anytime you experience a problem, we will fix it without the typical dealer hassle.

In Home Proposal

We bring the factory to you. With our free in home consultation and exact proposal, our factory representatives will measure to the inch and price to the penny. Call, click NewSouthWindow.com or visit our factory showroom today.

Jimmy H. Cowan, Jr., CFA

Marion County Property Appraiser



501 SE 25th Avenue, Ocala, FL 34471 Telephone: (352) 368-8300 Fax: (352) 368-8336

2025 Property Record Card Real Estate

2834-002-005

[GOOGLE Street View](#)

Prime Key: 1239737

[MAP IT+](#)

Current as of 2/20/2025

Property Information

NOBLE HAUS HOLDINGS LLC
218 N 2ND ST
FORT PIERCE FL 34950-4406

Taxes / Assessments:
Map ID: 179
Millage: 1001 - OCALA

M.S.T.U.

PC: 01

Acres: .31

Situs: Situs: 217 NE 11TH AVE OCALA

2024 Certified Value

| | |
|----------------------|-----------|
| Land Just Value | \$38,475 |
| Buildings | \$89,262 |
| Miscellaneous | \$565 |
| Total Just Value | \$128,302 |
| Total Assessed Value | \$128,302 |
| Exemptions | \$0 |
| Total Taxable | \$128,302 |

Ex Codes:

History of Assessed Values

| Year | Land Just | Building | Misc Value | Mkt/Just | Assessed Val | Exemptions | Taxable Val |
|------|-----------|-----------|------------|-----------|--------------|------------|-------------|
| 2024 | \$38,475 | \$89,262 | \$565 | \$128,302 | \$128,302 | \$0 | \$128,302 |
| 2023 | \$38,475 | \$104,783 | \$668 | \$143,926 | \$143,926 | \$0 | \$143,926 |
| 2022 | \$38,475 | \$96,013 | \$668 | \$135,156 | \$135,156 | \$0 | \$135,156 |

Property Transfer History

| Book/Page | Date | Instrument | Code | Q/U | V/I | Price |
|-----------|---------|---------------|------------------------|-----|-----|-----------|
| 7426/0585 | 03/2021 | 07 WARRANTY | 4 V-APPRAISERS OPINION | Q | I | \$131,000 |
| 5887/0412 | 06/2013 | 05 QUIT CLAIM | 0 | U | I | \$100 |
| 4404/0305 | 04/2006 | 07 WARRANTY | 2 V-SALES VERIFICATION | Q | I | \$183,200 |
| 3721/1572 | 05/2004 | 07 WARRANTY | 2 V-SALES VERIFICATION | Q | I | \$100,000 |
| 3498/1605 | 08/2003 | 60 CRT ORD | 0 | U | I | \$100 |
| 3498/1602 | 08/2003 | 62 DISTR | 0 | U | I | \$100 |
| 3495/1603 | 08/2003 | 74 PROBATE | 0 | U | I | \$100 |
| 0963/0239 | 04/1979 | 71 DTH CER | 0 | U | I | \$100 |

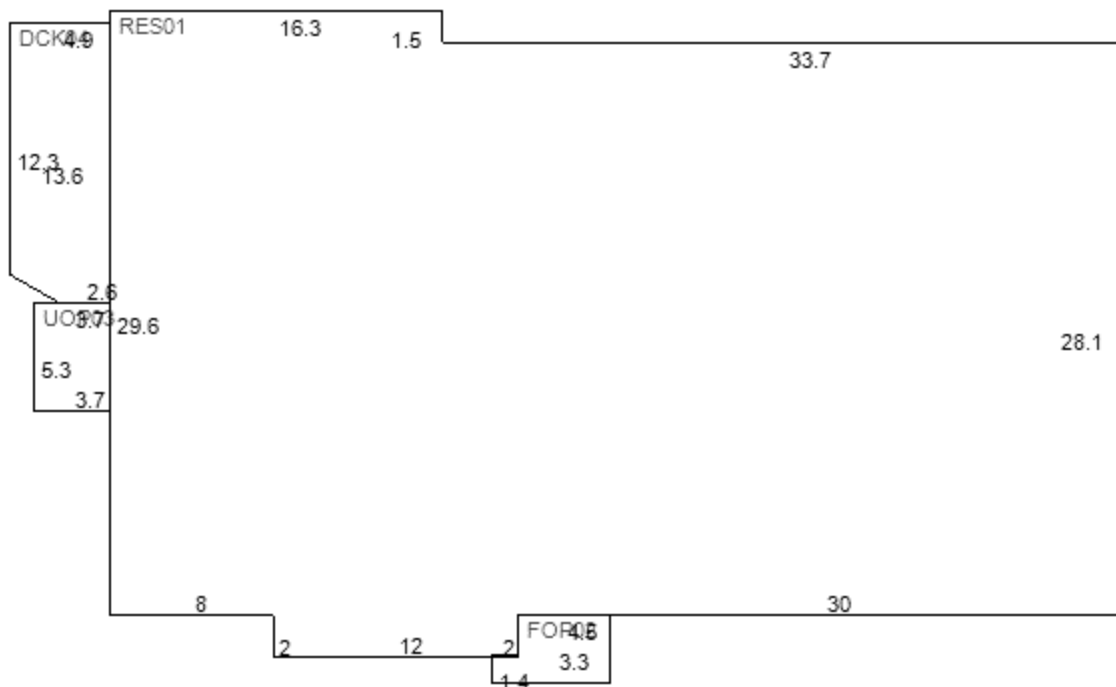
Property Description

SEC 17 TWP 15 RGE 22

THAT PART OF S 10 FT OF AN ALLEY LYING N OF & ADJ TO ABOVE
DESCRIBED PROPERTY

| Use | CUse | Front | Depth | Zoning | Units | Type | Rate | Loc | Shp | Phy | Class | Value | Just Value |
|--|------|-------|-------|--------|-------|------|------|-----|-----|-----|-------|-------|------------|
| 0100 | | 90.0 | 150.0 | R3 | 90.00 | FF | | | | | | | |
| Neighborhood 4701 - LYNWOOD PARK REPLAT+ | | | | | | | | | | | | | |
| Mkt: 8 70 | | | | | | | | | | | | | |

DCK04=U13,6L4,9D12,3A120|2,7R2,6.U14,3



Building Characteristics

| | | |
|----------------------|---------------------------|--------------------------------------|
| Improvement | 1F - SFR- 01 FAMILY RESID | Year Built 1940 |
| Effective Age | 6 - 25-29 YRS | Physical Deterioration 0% |
| Condition | 4 | Obsolescence: Functional 0% |
| Quality Grade | 500 - FAIR | Obsolescence: Locational 0% |
| Inspected on | 10/24/2024 by 250 | Architecture 0 - STANDARD SFR |
| | | Base Perimeter 163 |

| Type | ID | Exterior Walls | Stories | Year Built | Finished Attic | Bsmt Area | Bsmt Finish | Ground Floor Area | Total Flr Area |
|------|------|------------------|---------|------------|----------------|-----------|-------------|-------------------|----------------|
| RES | 0110 | - ASBESTOS SHNGL | 1.00 | 1940 | N | 0 % | 0 % | 1,453 | 1,453 |
| FOP | 0201 | - NO EXTERIOR | 1.00 | 1940 | N | 0 % | 0 % | 17 | 17 |
| UOP | 0301 | - NO EXTERIOR | 1.00 | 1940 | N | 0 % | 0 % | 20 | 20 |
| DCK | 0401 | - NO EXTERIOR | 1.00 | 2023 | N | 0 % | 0 % | 65 | 65 |

Section: 1

| | | | |
|--------------------------------------|--|---------------------------|-----------------------------|
| Roof Style: 10 GABLE | Floor Finish: 28 SOFTWD ON WOOD | Bedrooms: 2 | Blt-In Kitchen: Y |
| Roof Cover: 16 GALVANIZED MTL | Wall Finish: 20 PLASTER | 4 Fixture Baths: 0 | Dishwasher: Y |
| Heat Meth 1: 20 HEAT PUMP | Heat Fuel 1: 10 ELECTRIC | 3 Fixture Baths: 2 | Garbage Disposal: Y |
| Heat Meth 2: 00 | Heat Fuel 2: 00 | 2 Fixture Baths: 0 | Garbage Compactor: N |
| Foundation: 3 PIER | Fireplaces: 0 | Extra Fixtures: 2 | Intercom: N |
| A/C: Y | | | Vacuum: N |

Miscellaneous Improvements

| Type | Nbr Units | Type | Life | Year In | Grade | Length | Width |
|--------------------|-----------|------|------|---------|-------|--------|-------|
| 144 PAVING ASPHALT | 774.00 | SF | 5 | 1979 | 1 | 0.0 | 0.0 |
| 114 FENCE BOARD | 183.00 | LF | 10 | 2023 | 4 | 0.0 | 0.0 |

Appraiser Notes

MAILED REG ACCESS LETTER 8-18-99 JL.

PTO IN BACK N/A
DCK IN BACK (12X9) N/A
UDU (8X12) N/A

Planning and Building

** Permit Search **

| Permit Number | Date Issued | Date Completed | Description |
|---------------|-------------|----------------|----------------------|
| BLD22-3262 | 10/24/2022 | 12/29/2022 | NOBLE HAUS / REROOF |
| BLD21-2316 | 9/17/2021 | - | NOBLE HAUS / WINDOWS |
| OC1141 | 7/1/1991 | - | BLDG01=REROOF |