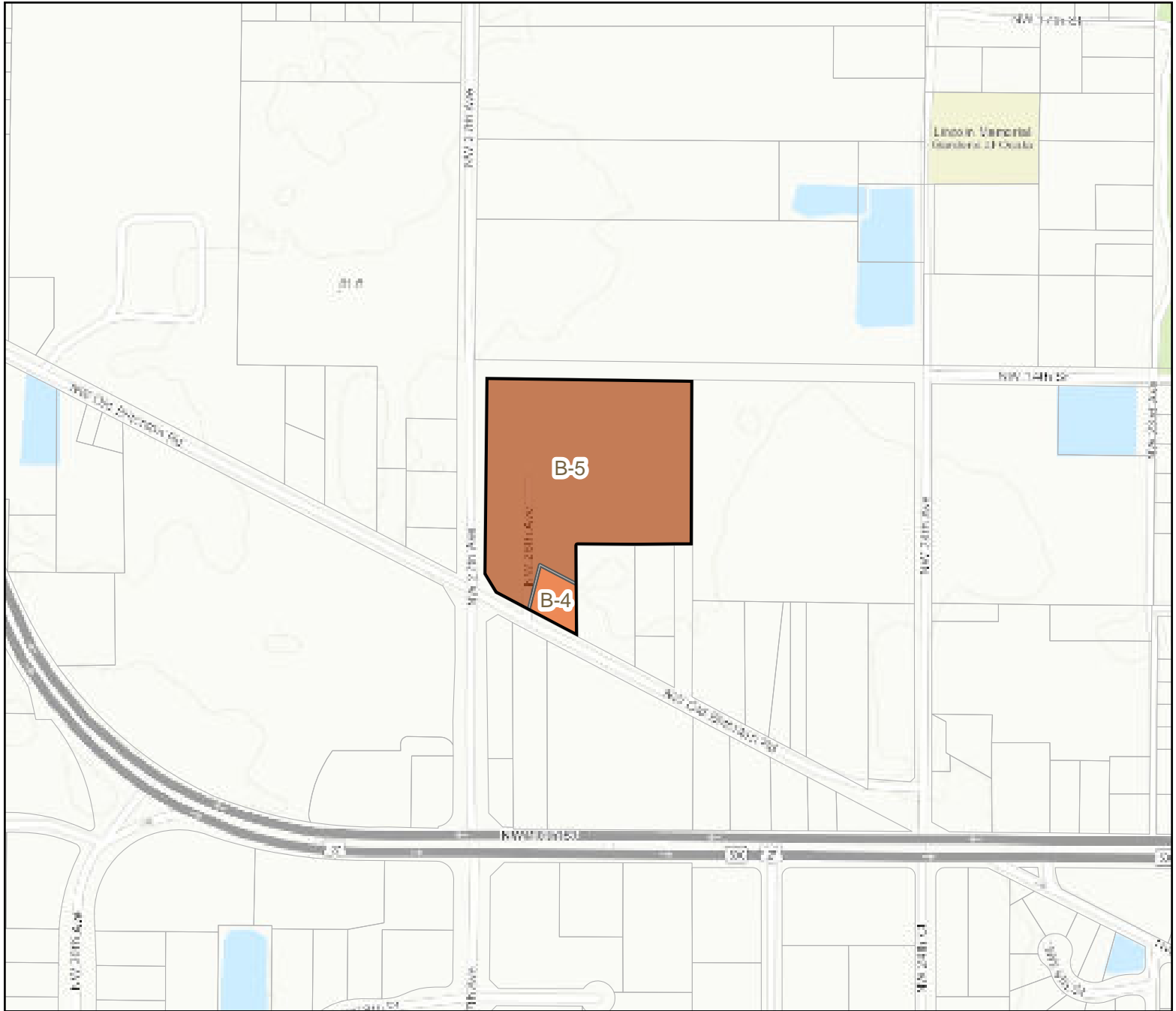
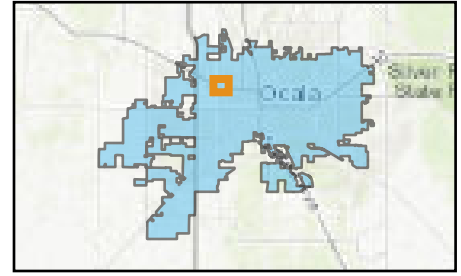


ZONING CASE MAP

P & Z Meeting: April 11, 2022

Location Map

Case Number: ZON22-44688
Parcel Number: 22147-000-00 & 22145-001-00
Property Size: Approximately 8.75 acres
Land Use Designation: EC, Employment Center (City)
Zoning: B-5, Wholesale Business
Proposal: A request to rezone from Wholesale Business, B-5, and General Business, B-4, to Light Industrial, M-1



- Property
- Parcels
- Zoning**
- B-4: General Business
- B-5: Wholesale Business
- M-1: Light Industrial



Prepared by the City of Ocala
Growth Management Department