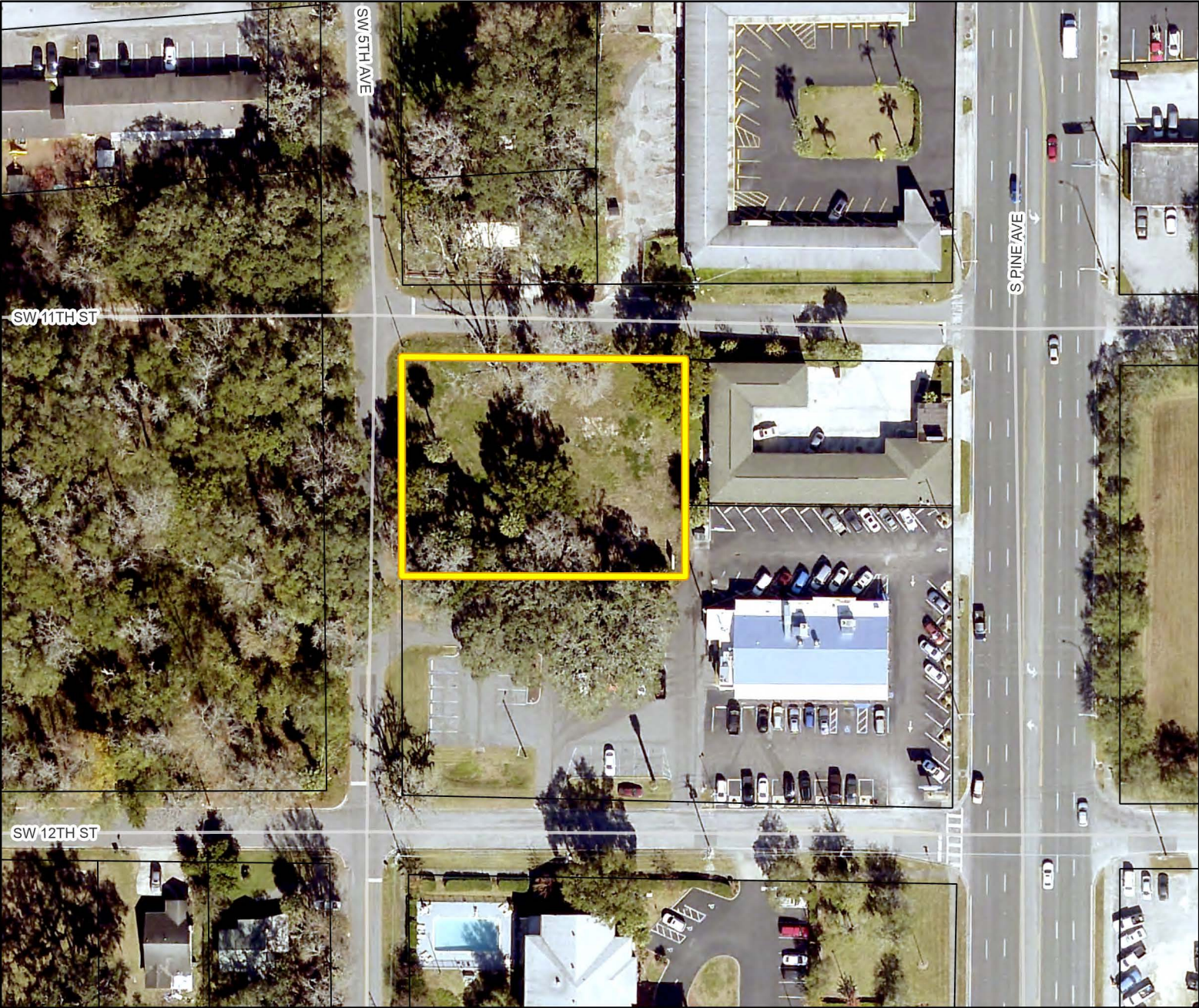
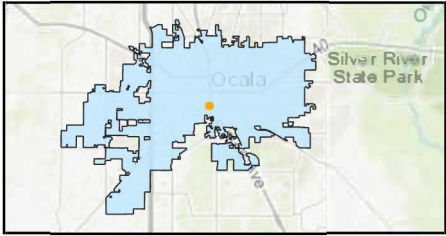


AERIAL MAP

Case Number: ZON23-45299
Parcel: 28575-002-01

Property Size: Approximately 0.54 acres
Land Use Designation: High Intensity/Central Core
Zoning: B-1A, Limited Neighborhood Business
Proposal: A request to rezone from B-1A, Limited Neighborhood Business, to B-4, General Business.



 Property
 Parcels

