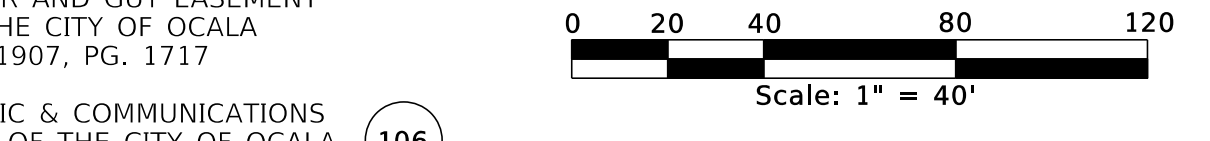


CURVE DATA					
CURVE	Δ	RADIUS	LENGTH	CHORD DISTANCE	CHORD BEARING
C1	04°28'23"(C)	5321.50'(C)	415.44'(C)	415.33'(C)	N01°53'42"W
C2	00°53'44"(F)	2129.48'(F)	33.28'(F)	33.28'(F)	N00°07'26"E
C3	00°52'53"(D)	2129.48'(D)	32.76'(D)	32.76'(D)	N02°25'45"W
C4	00°26'38"(C)	2037.48'(C)	15.78'(C)	15.78'(C)	N07°18'39"W
C5	00°26'31"(D)	2037.48'(D)	15.72'(D)	15.72'(D)	N04°01'05"W
C6	06°40'14"(F)	2129.48'(F)	247.93'(F)	247.79'(F)	N04°11'51"W
C6	06°41'05"(D)	2129.48'(D)	248.45'(D)	248.31'(D)	N04°11'51"W

CURVE SBLC1		CURVE SBLC2	
P.I. STA 109+75.06	N = 1782965.7264	P.I. STA 112+66.95	N = 1783255.5967
E = 594421.3614	E = 594383.0307	E = 594383.0307	E = 594383.0307
Δ = 08°06'38" LT	Δ = 07°56'41" RT	Δ = 07°56'41" RT	Δ = 07°56'41" RT
R = 2083.48'	R = 2083.48'	R = 2083.48'	R = 2083.48'
T = 147.71'	T = 144.68'	T = 144.68'	T = 144.68'
L = 294.93'	L = 288.90'	L = 288.90'	L = 288.90'
P.C. STA 108+27.36	P.R.C. STA 111+22.29	P.R.C. STA 111+22.29	P.T. STA 114+11.19
P.R.C. STA 111+22.29	P.T. STA 114+11.19		

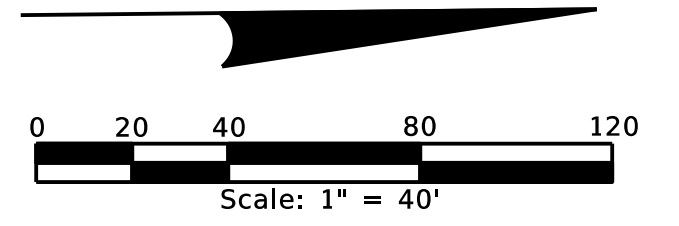
LINE TABLE		
NO.	BEARING	DISTANCE
L1	N32°11'06"E	40.07'(C)
L2	N89°01'39"W	89.69'(C)
L3	S89°34'01"E	16.32'(F)(D)
L4	N00°34'53"E	20.00'(F)(D)
L5	N89°34'01"W	16.73'(F)(D)



09/30/2025

SEE SHEET 11  
FOR CONTINUATION OF PARENT TRACT

LINE TABLE		
NO.	BEARING	DISTANCE
L1	N23°35'10"W	31.98'(C)
L2	N89°35'17"W	17.58'(C)
L3	S89°35'17"E	22.00'(C)

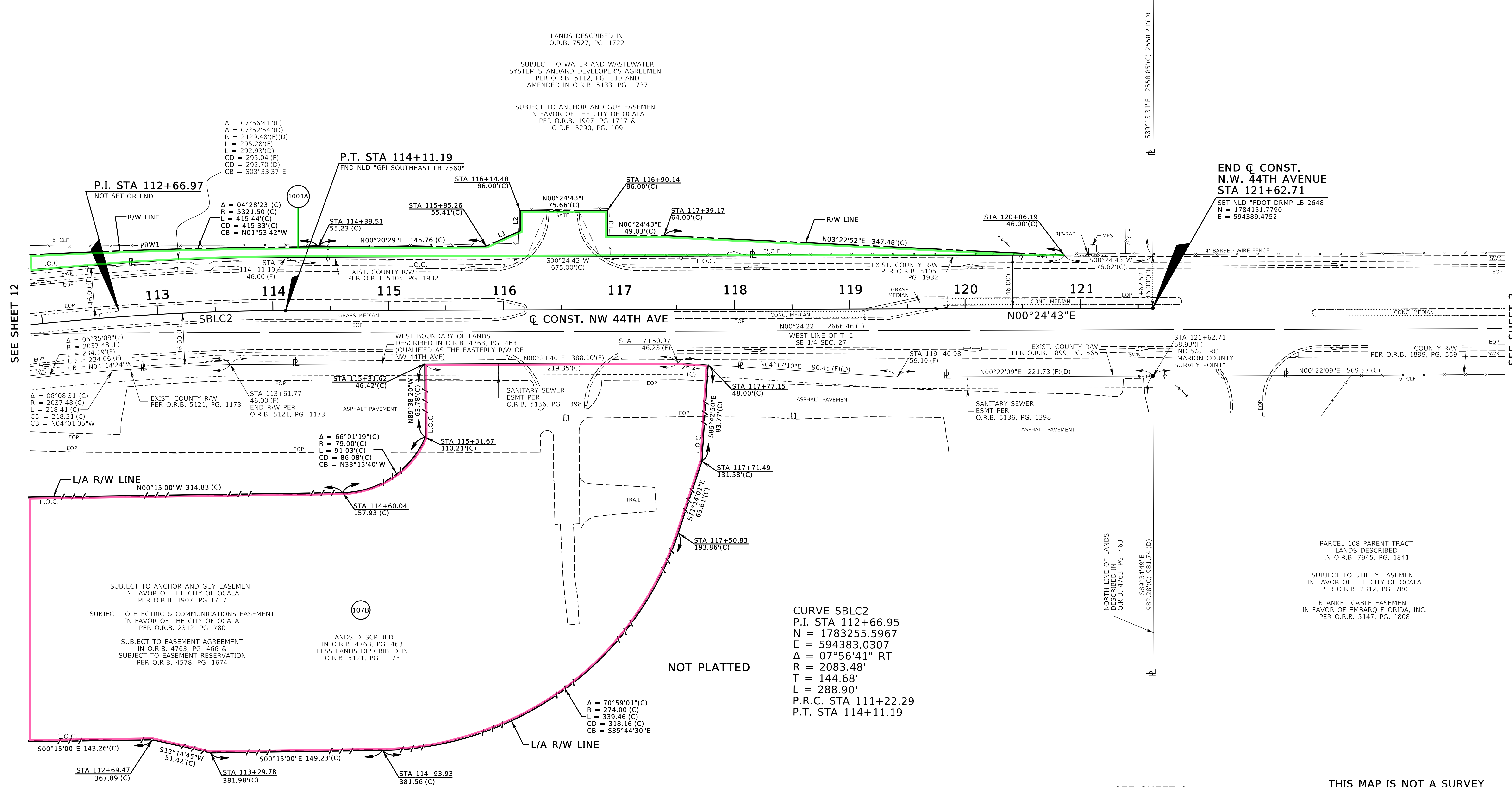


NOT PLATTED

LANDS DESCRIBED IN  
O.R.B. 7527, PG. 1722

SUBJECT TO WATER AND WASTEWATER  
SYSTEM STANDARD DEVELOPER'S AGREEMENT  
PER O.R.B. 5112, PG. 110 AND  
AMENDED IN O.R.B. 5133, PG. 1737

SUBJECT TO ANCHOR AND GUY EASEMENT  
IN FAVOR OF THE CITY OF OCALA  
PER O.R.B. 1907, PG. 1717 &  
O.R.B. 5290, PG. 109



SEE SHEET 12

SEE SHEET 3

NOT PLATTED

CURVE SBL C2  
P.I. STA 112+66.95  
N = 1783255.5967  
E = 594383.0307  
 $\Delta = 07^{\circ}56'41''$  RT  
R = 2083.48'  
T = 144.68'  
L = 288.90'  
P.R.C. STA 111+22.29  
P.T. STA 114+11.19

SECTION 27, TOWNSHIP 14 SOUTH, RANGE 21 EAST

SEE SHEET 9

THIS MAP IS NOT A SURVEY  
SEE SHEET 1 FOR GENERAL NOTES AND LEGEND  
STATE ROAD 93 (I-75) AT NW 49TH STREET

RIGHT OF WAY MAP	FLORIDA DEPARTMENT OF TRANSPORTATION SURVEYING AND MAPPING	APPROVED BY:	DATE: 07/10/2024	BY: M. VOOR	DATE: 10/11/2022	FED. PROJ. D523-045-B	SECTION 36210	MAPS PREPARED BY: DRMP, INC. 941 LAKE BALDWIN LANE ORLANDO, FL. 32814	DATA SOURCE: SEE GENERAL NOTES SCALE: 1"=40'
		FOR DISTRICT SECRETARY		PRELIM					
				REVISION	BY	DATE			

07/22/2024