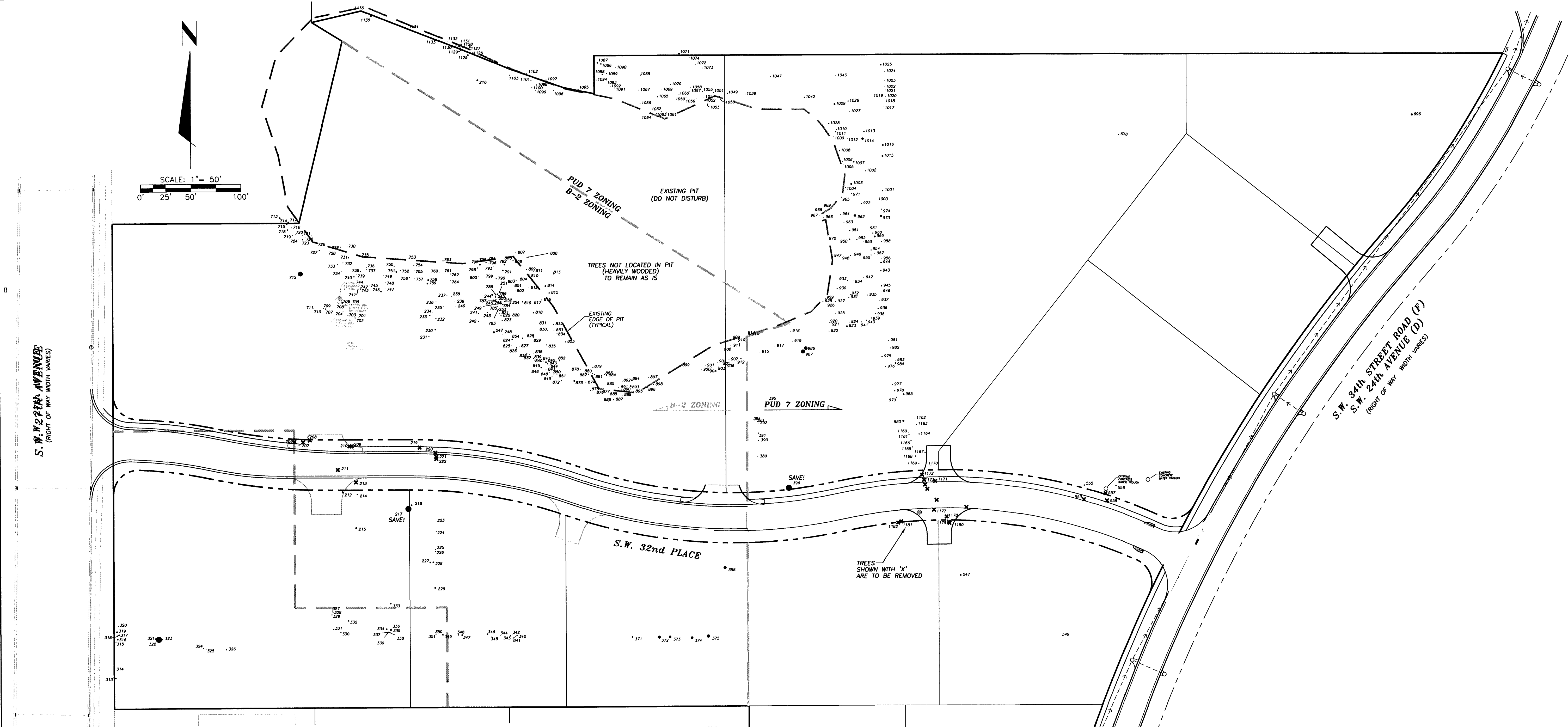
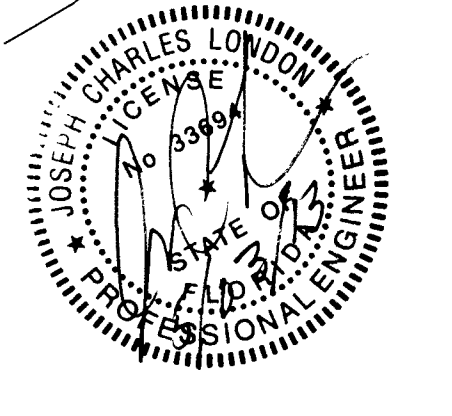
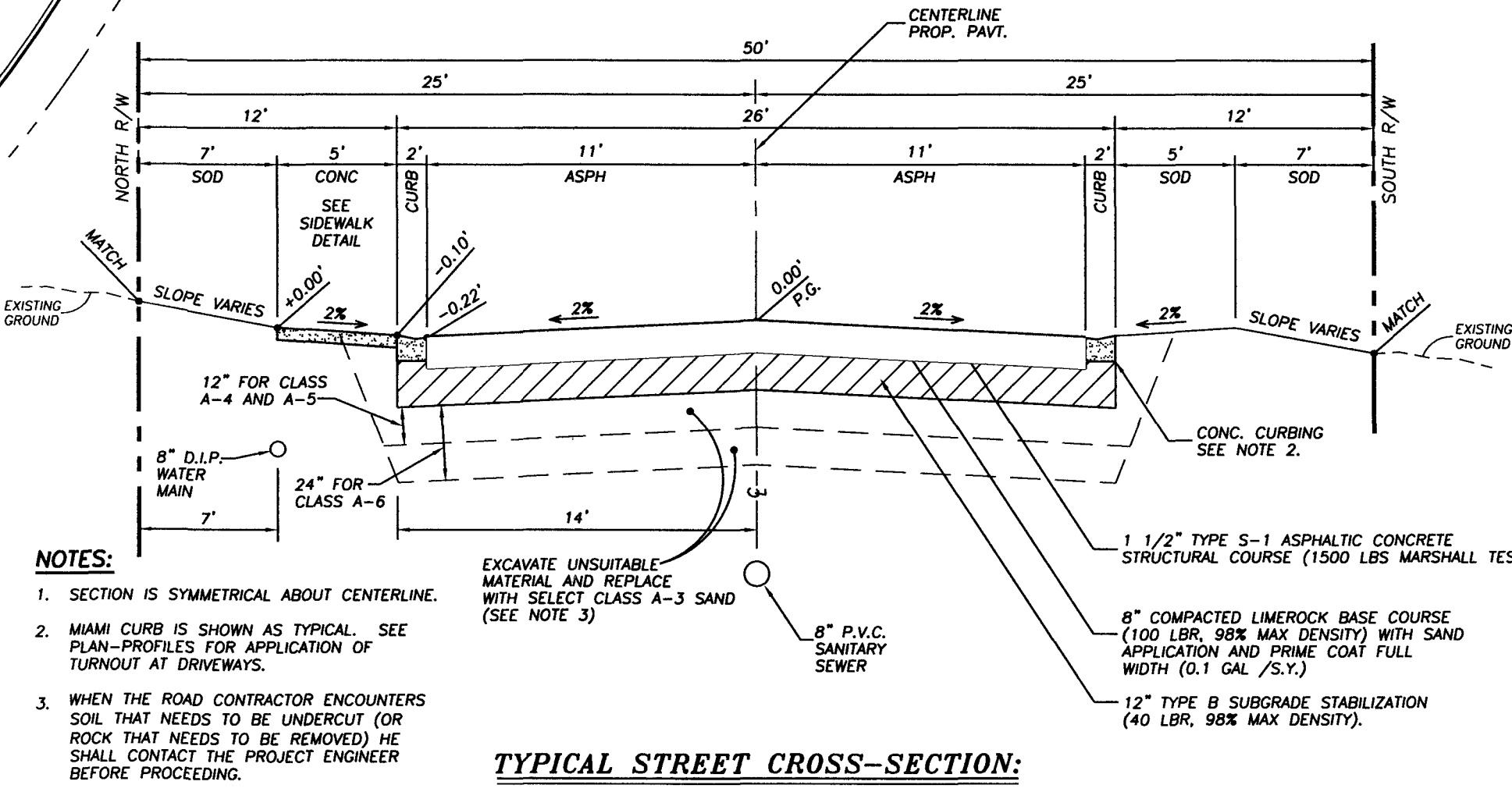


1	PER CITY	J.R.H.	5-02-13
NO.	REVISION	BY	DATE
DESIGN	J.C.L.	DATE	1-20-04
DRAW	H.W.B.	PROJECT	03091
CHECK	J.C.L.	FILE	SM030



TREE TABLE		INDICATES TO BE REMOVED	
NO.	DESCRIPTION	NO.	DESCRIPTION
206	8" OAK	811	8" CEDAR
207	6" CHINA BERRY	812	4" DOUBLE SWEETGUM
208	12" PALM	813	10" HACKBERRY
209	14" PALM	814	12" PALM
210	16" PALM	815	18" PALM
211	18" PALM	816	20" PALM
212	20" PALM	817	22" PALM
213	22" PALM	818	24" PALM
214	24" PALM	819	26" PALM
215	26" PALM	820	28" PALM
216	28" PALM	821	30" PALM
217	30" PALM	822	32" PALM
218	32" PALM	823	34" PALM
219	34" PALM	824	36" PALM
220	36" PALM	825	38" PALM
221	38" PALM	826	40" PALM
222	40" PALM	827	42" PALM
223	42" PALM	828	44" PALM
224	44" PALM	829	46" PALM
225	46" PALM	830	48" PALM
226	48" PALM	831	50" PALM
227	50" PALM	832	52" PALM
228	52" PALM	833	54" PALM
229	54" PALM	834	56" PALM
230	56" PALM	835	58" PALM
231	58" PALM	836	60" PALM
232	60" PALM	837	62" PALM
233	62" PALM	838	64" PALM
234	64" PALM	839	66" PALM
235	66" PALM	840	68" PALM
236	68" PALM	841	70" PALM
237	70" PALM	842	72" PALM
238	72" PALM	843	74" PALM
239	74" PALM	844	76" PALM
240	76" PALM	845	78" PALM
241	78" PALM	846	80" PALM
242	80" PALM	847	82" PALM
243	82" PALM	848	84" PALM
244	84" PALM	849	86" PALM
245	86" PALM	850	88" PALM
246	88" PALM	851	90" PALM
247	90" PALM	852	92" PALM
248	92" PALM	853	94" PALM
249	94" PALM	854	96" PALM
250	96" PALM	855	98" PALM
251	98" PALM	856	100" PALM
252	100" PALM	857	102" PALM
253	102" PALM	858	104" PALM
254	104" PALM	859	106" PALM
255	106" PALM	860	108" PALM
256	108" PALM	861	110" PALM
257	110" PALM	862	112" PALM
258	112" PALM	863	114" PALM
259	114" PALM	864	116" PALM
260	116" PALM	865	118" PALM
261	118" PALM	866	120" PALM
262	120" PALM	867	122" PALM
263	122" PALM	868	124" PALM
264	124" PALM	869	126" PALM
265	126" PALM	870	128" PALM
266	128" PALM	871	130" PALM
267	130" PALM	872	132" PALM
268	132" PALM	873	134" PALM
269	134" PALM	874	136" PALM
270	136" PALM	875	138" PALM
271	138" PALM	876	140" PALM
272	140" PALM	877	142" PALM
273	142" PALM	878	144" PALM
274	144" PALM	879	146" PALM
275	146" PALM	880	148" PALM
276	148" PALM	881	150" PALM
277	150" PALM	882	152" PALM
278	152" PALM	883	154" PALM
279	154" PALM	884	156" PALM
280	156" PALM	885	158" PALM
281	158" PALM	886	160" PALM
282	160" PALM	887	162" PALM
283	162" PALM	888	164" PALM
284	164" PALM	889	166" PALM
285	166" PALM	890	168" PALM
286	168" PALM	891	170" PALM
287	170" PALM	892	172" PALM
288	172" PALM	893	174" PALM
289	174" PALM	894	176" PALM
290	176" PALM	895	178" PALM
291	178" PALM	896	180" PALM
292	180" PALM	897	182" PALM
293	182" PALM	898	184" PALM
294	184" PALM	899	186" PALM
295	186" PALM	900	188" PALM
296	188" PALM	901	190" PALM
297	190" PALM	902	192" PALM
298	192" PALM	903	194" PALM
299	194" PALM	904	196" PALM
300	196" PALM	905	198" PALM
301	198" PALM	906	200" PALM



Z:\03091 File Prof Pmk\dwg\TIA-PROF-PARK-AMENDED FINAL PUD (2013).dwg, 5/7/2013 4:31:17 PM, LANIER LW26 P5