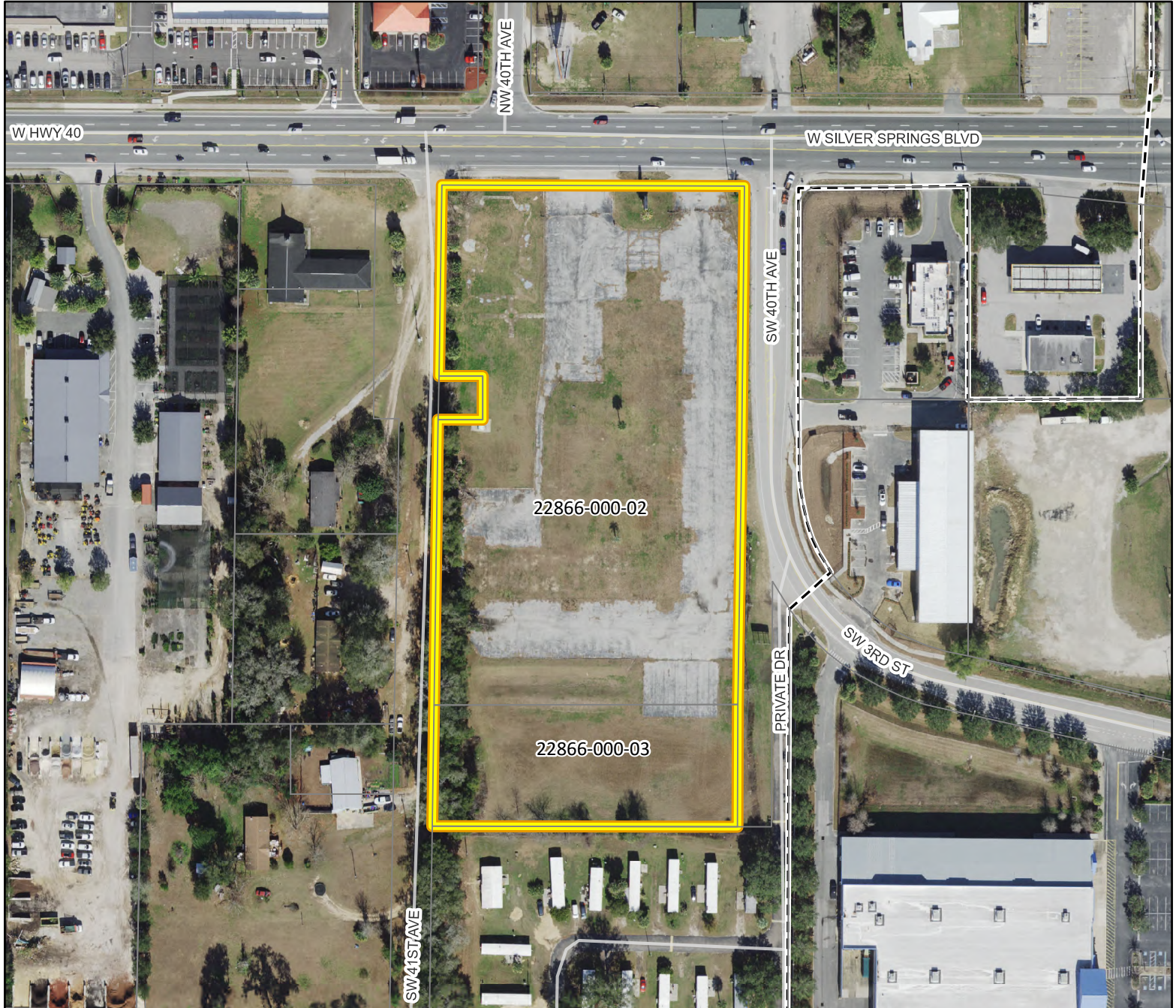
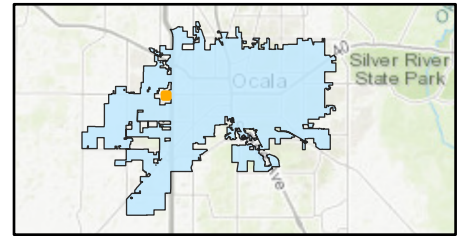


# AERIAL MAP

P & Z Meeting: August 12, 2024

**Case Number:** LUC24-45691  
**Parcel Number:** 22866-000-02 & 22866-000-03  
**Property Size:** Approximately 5.86 acres  
**Land Use Designation:** Commercial (County)  
**Zoning:** B2, Community Business (County)  
**Proposal:** A request to change future land use from Commercial (County) to Low Intensity (City).

## Location Map



-  Subject Property
-  Parcels



Prepared by the City of Ocala  
Growth Management Department  
by kwirthlin on 7/17/2024