



















K:\DATA\_CAD\242387\001\242387.dwg - Shared by: Richard V. Busche, P.E. - Date: 05/02/2024 10:00:00 AM - Layer: C02.08 CURVE TABLE - May 04, 2024  
 This document, together with the concepts and design presented herein, is intended only for the specific purpose and client for which it was prepared. Reuse of and improper reliance on this document without written authorization and adaptation by Kimley-Horn and Associates, Inc. shall be without liability to Kimley-Horn and Associates, Inc.

CURVE TABLE						
CURVE	RADIUS	LENGTH	CHORD BEARING	CHORD	DELTA	TANGENT
C1	500.00'	158.38'	S74°38'09"E	157.72'	18°08'55"	79.86'
C2	500.00'	693.01'	N67°59'25"E	638.86'	79°24'49"	415.21'
C3	500.00'	369.70'	N49°27'57"E	361.34'	42°21'52"	193.76'
C4	1135.01'	464.91'	S85°13'13"E	461.67'	23°28'09"	235.76'
C5	500.00'	285.39'	S80°36'10"E	281.53'	32°42'13"	146.70'
C6	100.00'	57.36'	S47°49'04"E	56.58'	32°51'59"	29.49'
C7	300.00'	375.21'	N18°07'59"W	351.23'	71°39'36"	216.61'
C8	375.00'	144.51'	N65°00'10"W	143.62'	22°04'46"	73.16'
C9	1400.00'	393.25'	N84°05'22"W	391.96'	16°05'39"	197.93'
C10	50.00'	80.39'	S41°48'08"W	72.01'	92°07'21"	51.89'
C11	75.00'	123.30'	S29°24'03"E	109.88'	94°11'46"	80.70'
C12	1100.00'	1180.22'	N72°45'50"E	1124.42'	61°28'26"	654.09'
C13	300.00'	328.37'	N73°23'02"E	312.22'	62°42'50"	182.81'
C14	1735.01'	587.30'	S84°57'23"E	584.50'	19°23'40"	296.48'
C15	200.00'	83.62'	S82°40'34"E	83.01'	23°57'18"	42.43'
C16	800.00'	1010.43'	N71°30'49"E	944.60'	72°22'01"	585.16'
C17	375.00'	465.90'	N70°55'20"E	436.51'	71°11'03"	268.40'
C18	1435.01'	587.80'	S85°13'13"E	583.70'	23°28'09"	298.08'
C19	200.00'	114.16'	S80°36'10"E	112.61'	32°42'13"	58.68'
C21	2545.00'	604.11'	N12°30'01"E	602.69'	13°36'01"	303.48'
C22	100.00'	49.68'	N13°07'29"W	49.17'	28°28'01"	25.37'
C23	50.00'	77.45'	S26°19'23"E	69.94'	88°45'02"	48.92'
C24	2245.00'	663.89'	S9°34'49"W	661.47'	16°56'36"	334.38'
C25	175.00'	274.49'	S46°02'35"W	247.20'	89°52'07"	174.60'
C26	50.00'	48.69'	N61°07'36"W	46.79'	55°47'32"	26.47'
C27	300.00'	149.05'	S76°52'31"W	147.52'	28°28'01"	76.10'
C28	50.00'	53.80'	S31°48'58"W	51.24'	61°39'05"	29.84'
C29	100.00'	206.56'	S58°11'02"E	171.75'	118°20'55"	167.58'
C30	225.00'	111.79'	N76°52'31"E	110.64'	28°28'01"	57.07'
C56	25.00'	38.18'	S48°00'47"E	34.58'	87°30'29"	23.94'
C57	25.00'	40.20'	S41°48'08"W	36.00'	92°07'21"	25.94'
C58	1375.00'	56.72'	S89°02'43"W	56.72'	2°21'49"	28.36'
C59	1375.00'	54.35'	N88°38'26"W	54.35'	2°15'53"	27.18'
C60	1375.00'	54.35'	N86°22'33"W	54.35'	2°15'53"	27.18'
C61	1375.00'	54.35'	N84°06'40"W	54.35'	2°15'53"	27.18'
C62	1375.00'	54.35'	N81°50'47"W	54.35'	2°15'53"	27.18'
C63	1375.00'	54.35'	N79°34'55"W	54.35'	2°15'53"	27.18'
C64	1375.00'	57.76'	N77°14'45"W	57.76'	2°24'25"	28.89'
C65	350.00'	77.19'	N69°43'27"W	77.04'	12°38'12"	38.75'
C66	350.00'	57.68'	N58°41'04"W	57.62'	9°26'34"	28.91'
C67	275.00'	44.11'	N49°22'03"W	44.07'	9°11'28"	22.10'
C68	275.00'	81.59'	N36°16'21"W	81.29'	16°59'56"	41.10'
C69	275.00'	83.28'	N19°05'50"W	82.97'	17°21'07"	41.96'
C70	275.00'	83.28'	N1°44'43"W	82.97'	17°21'07"	41.96'
C71	275.00'	51.67'	N12°18'50"E	51.60'	10°45'59"	25.91'
C72	25.00'	34.29'	N56°59'37"E	31.67'	78°35'34"	20.46'
C73	475.00'	66.94'	S79°40'21"E	66.89'	8°04'30"	33.53'
C74	475.00'	83.51'	S70°35'54"E	83.41'	10°04'26"	41.87'
C75	525.00'	13.98'	S66°19'27"E	13.98'	1°31'32"	6.99'
C76	25.00'	36.99'	S24°41'42"E	33.71'	84°47'03"	22.82'
C77	100.00'	35.79'	S7°26'38"W	35.60'	20°30'24"	18.09'
C78	100.00'	42.87'	S15°05'28"E	42.54'	24°33'47"	21.77'
C79	100.00'	42.87'	S39°39'15"E	42.54'	24°33'47"	21.77'
C80	100.00'	42.87'	S64°13'03"E	42.54'	24°33'47"	21.77'
C81	1125.00'	51.09'	S77°48'00"E	51.08'	2°36'06"	25.55'
C82	1125.00'	51.09'	S80°24'06"E	51.08'	2°36'06"	25.55'
C83	1125.00'	51.09'	S83°00'13"E	51.08'	2°36'06"	25.55'
C84	1125.00'	51.09'	S85°36'19"E	51.08'	2°36'06"	25.55'
C85	1125.00'	51.09'	S88°12'25"E	51.08'	2°36'06"	25.55'
C86	1125.00'	44.36'	N89°21'45"E	44.36'	2°15'33"	22.18'
C105	25.00'	38.79'	S64°51'11"W	35.01'	88°53'49"	24.52'
C106	225.00'	29.04'	N74°23'46"W	29.02'	7°23'43"	14.54'
C107	225.00'	48.47'	N84°15'56"W	48.38'	12°20'38"	24.33'

CURVE TABLE						
CURVE	RADIUS	LENGTH	CHORD BEARING	CHORD	DELTA	TANGENT
C108	225.00'	16.56'	S87°27'16"W	16.55'	4°12'57"	8.28'
C109	1710.01'	33.76'	S85°54'43"W	33.76'	1°07'52"	16.88'
C110	1710.01'	53.44'	S87°22'23"W	53.44'	1°47'26"	26.72'
C111	1710.01'	53.44'	S89°09'48"W	53.44'	1°47'26"	26.72'
C112	1710.01'	53.44'	N89°02'46"W	53.44'	1°47'26"	26.72'
C113	1710.01'	58.78'	N87°09'57"W	58.78'	1°58'10"	29.39'
C114	1710.01'	58.78'	N85°11'47"W	58.78'	1°58'10"	29.39'
C115	1710.01'	53.44'	N83°18'59"W	53.44'	1°47'26"	26.72'
C116	1710.01'	53.44'	N81°31'33"W	53.44'	1°47'26"	26.72'
C117	1710.01'	53.44'	N79°44'07"W	53.44'	1°47'26"	26.72'
C118	1710.01'	53.44'	N77°56'41"W	53.44'	1°47'26"	26.72'
C119	1710.01'	53.44'	N76°09'15"W	53.44'	1°47'26"	26.72'
C120	325.00'	47.04'	N79°24'21"W	47.00'	8°17'37"	23.56'
C121	325.00'	47.04'	N87°41'58"W	47.00'	8°17'37"	23.56'
C122	325.00'	45.10'	S84°10'42"W	45.06'	7°57'03"	22.59'
C123	25.00'	34.91'	N59°47'27"W	32.14'	80°00'45"	20.98'
C124	25.00'	36.46'	S21°59'31"W	33.31'	83°33'12"	22.33'
C125	325.00'	50.88'	S59°17'00"W	50.83'	8°58'14"	25.49'
C126	325.00'	48.93'	S50°29'08"W	48.88'	8°37'31"	24.51'
C127	325.00'	23.52'	S44°06'00"W	23.51'	4°08'45"	11.76'
C128	1075.00'	29.98'	S42°49'33"W	29.98'	1°35'52"	14.99'
C129	1075.00'	57.93'	S45°10'07"W	57.92'	3°05'15"	28.97'
C130	1075.00'	57.93'	S48°15'22"W	57.92'	3°05'15"	28.97'
C131	1075.00'	57.93'	S51°20'38"W	57.92'	3°05'15"	28.97'
C132	1075.00'	57.93'	S54°25'53"W	57.92'	3°05'15"	28.97'
C133	1075.00'	57.93'	S57°31'08"W	57.92'	3°05'15"	28.97'
C134	1075.00'	57.93'	S60°36'23"W	57.92'	3°05'15"	28.97'
C135	1075.00'	55.70'	S63°38'05"W	55.70'	2°58'08"	27.86'
C136	1075.00'	55.70'	S66°36'13"W	55.70'	2°58'08"	27.86'
C137	1075.00'	55.70'	S69°34'20"W	55.70'	2°58'08"	27.86'
C138	1075.00'	55.70'	S72°32'28"W	55.70'	2°58'08"	27.86'
C139	1075.00'	55.70'	S75°30'36"W	55.70'	2°58'08"	27.86'
C140	1075.00'	55.70'	S78°28'43"W	55.70'	2°58'08"	27.86'
C141	1075.00'	55.70'	S81°26'51"W	55.70'	2°58'08"	27.86'
C142	1075.00'	61.62'	S84°34'27"W	61.61'	3°17'04"	30.82'
C143	1075.00'	61.27'	S87°50'57"W	61.26'	3°15'56"	30.64'
C144	1075.00'	55.70'	N89°02'01"W	55.70'	2°58'08"	27.86'
C145	1075.00'	55.70'	N86°03'53"W	55.70'	2°58'08"	27.86'
C146	1075.00'	55.70'	N83°05'45"W	55.70'	2°58'08"	27.86'
C147	1075.00'	55.70'	N80°07'38"W	55.70'	2°58'08"	27.86'
C148	1075.00'	40.22'	N77°34'15"W	40.22'	2°08'37"	20.11'
C149	50.00'	82.20'	N29°24'03"W	73.25'	94°11'46"	53.80'
C150	25.00'	37.80'	N61°00'39"E	34.30'	86°37'40"	23.57'
C151	825.00'	46.97'	S77°18'23"E	46.96'	3°15'44"	23.49'
C152	825.00'	52.71'	S80°46'04"E	52.70'	3°39'39"	26.36'
C153	825.00'	52.71'	S84°25'42"E	52.70'	3°39'39"	26.36'
C154	825.00'	52.71'	S88°05'21"E	52.70'	3°39'39"	26.36'
C155	825.00'	55.64'	N88°08'54"E	55.63'	3°51'51"	27.83'
C156	825.00'	53.69'	N84°21'07"E	53.68'	3°43'43"	26.85'
C157	825.00'	48.81'	N80°47'35"E	48.80'	3°23'23"	24.41'
C158	825.00'	48.81'	N77°24'12"E	48.80'	3°23'23"	24.41'
C159	825.00'	48.81'	N74°00'50"E	48.80'	3°23'23"	24.41'
C160	825.00'	48.81'	N70°37'27"E	48.80'	3°23'23"	24.41'
C161	825.00'	48.81'	N67°14'05"E	48.80'	3°23'23"	24.41'
C162	825.00'	48.81'	N63°50'42"E	48.80'	3°23'23"	24.41'
C163	825.00'	48.81'	N60°27'20"E	48.80'	3°23'23"	24.41'
C164	825.00'	48.81'	N57°03'57"E	48.80'	3°23'23"	24.41'
C165	825.00'	48.81'	N53°40'35"E	48.80'	3°23'23"	24.41'
C166	825.00'	48.81'	N50°17'12"E	48.80'	3°23'23"	24.41'
C167	825.00'	48.81'	N46°53'50"E	48.80'	3°23'23"	24.41'
C168	825.00'	48.81'	N43°30'27"E	48.80'	3°23'23"	24.41'
C169	825.00'	48.81'	N40°07'05"E	48.80'	3°23'23"	24.41'
C170	825.00'	44.54'	N36°52'36"E	44.53'	3°05'35"	22.27'

CURVE TABLE						
CURVE	RADIUS	LENGTH	CHORD BEARING	CHORD	DELTA	TANGENT
C171	350.00'	4.64'	N35°42'37"E	4.64'	0°45'37"	2.32'
C172	350.00'	72.92'	N42°03'32"E	72.78'	11°56'12"	36.59'
C173	350.00'	81.48'	N54°41'47"E	81.30'	13°20'18"	40.92'
C174	25.00'	43.13'	S68°12'35"E	37.98'	98°51'00"	29.19'
C175	25.00'	43.13'	N29°38'25"E	37.98'	98°51'00"	29.19'
C176	350.00'	83.00'	N85°51'30"E	82.80'	13°35'11"	41.69'
C177	350.00'	72.92'	S81°22'48"E	72.78'	11°56'12"	36.59'
C178	350.00'	11.77'	S74°26'55"E	11.77'	1°55'34"	5.88'
C179	1460.01'	4.05'	S73°33'55"E	4.05'	0°09'33"	2.03'
C180	1460.01'	49.32'	S74°36'45"E	49.32'	1°56'08"	24.66'
C181	1460.01'	49.32'	S76°32'53"E	49.32'	1°56'08"	24.66'
C182	1460.01'	49.32'	S78°29'01"E	49.32'	1°56'08"	24.66'
C183	1460.01'	49.32'	S80°25'09"E	49.32'	1°56'08"	24.66'
C184	1460.01'	49.32'	S82°21'17"E	49.32'	1°56'08"	24.66'
C185	1460.01'	49.32'	S84°17'25"E	49.32'	1°56'08"	24.66'
C186	1460.01'	49.32'	S86°13'32"E	49.32'	1°56'08"	24.66'
C187	1460.01'	49.32'	S88°09'40"E	49.32'	1°56'08"	24.66'
C188	1460.01'	49.32'	N89°54'12"E	49.32'	1°56'08"	24.66'
C189	1460.01'	49.32'	N87°58'04"E	49.32'	1°56'08"	24.66'
C190	1460.01'	49.32'	N86°01'56"E	49.32'	1°56'08"	24.66'
C191						







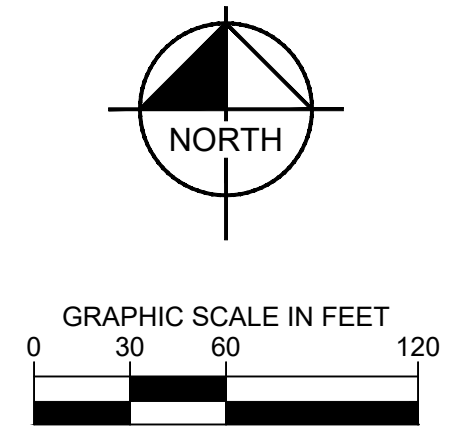
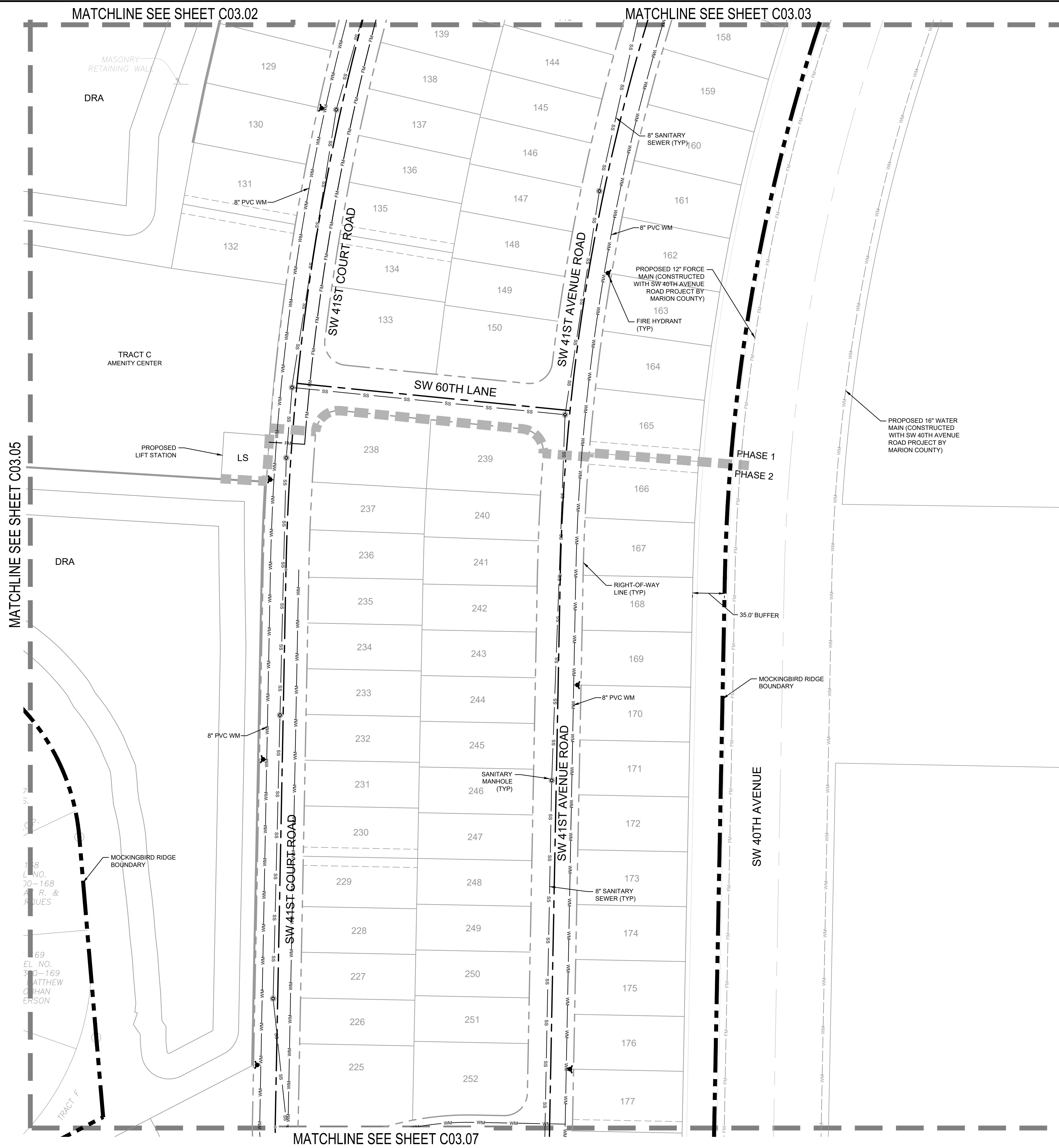






K:\CDA\_Civil\242387\001-242387-01-Utility\Plan\Utility\Utility Plan.dwg, Layout: C03.03, Utility Plan, May 04, 2026  
 PLOT FILE: C:\Users\c32101\Documents\Projects\242387\Utility\Utility Plan.dwg, Plot Date: 5/4/2026 11:54:11 AM

This document, together with the concept and design presented herein, is an instrument of service, as an instrument of service, is intended only for the specific purpose and client for which it was prepared. Reuse of and improper reliance on this document without written authorization and approval by Kimley-Horn and Associates, Inc. shall be without liability to Kimley-Horn and Associates, Inc.



**LEGEND**

- SS — PROPOSED SANITARY SEWER PIPE
- WM — PROPOSED WATER LINE
- FM — PROPOSED FORCE MAIN
- — EXISTING WATER LINE
- — EXISTING FORCE MAIN
- PROPOSED SANITARY MANHOLE
- PROPOSED FIRE HYDRANT

- IF REQUIRED UTILITY EASEMENT FOR POTABLE WATER MAIN AND FORCE MAIN TO BE 20' WIDE, GRAVITY SANITARY SEWER MAIN EASEMENT TO BE 30' WIDE.

No.	REVISIONS	DATE	BY

**Kimley»Horn**  
 © 2026 KIMLEY-HORN AND ASSOCIATES, INC.  
 1700 SE 17TH STREET, SUITE 200, OCALA, FLORIDA 34471  
 PHONE: 352-438-3000  
 WWW.KIMLEY-HORN.COM REGISTRY NO. 35106

LICENSED PROFESSIONAL  
 RICHARD V. BUSCHE, P.E.  
 FLORIDA LICENSE NUMBER  
 55568

**UTILITY PLAN**

MOCKINGBIRD RIDGE PD  
 PREPARED FOR  
 BOYD DEVELOPMENT, LLC  
 CITY OF OCALA FLORIDA

SHEET NUMBER  
**C03.06**

