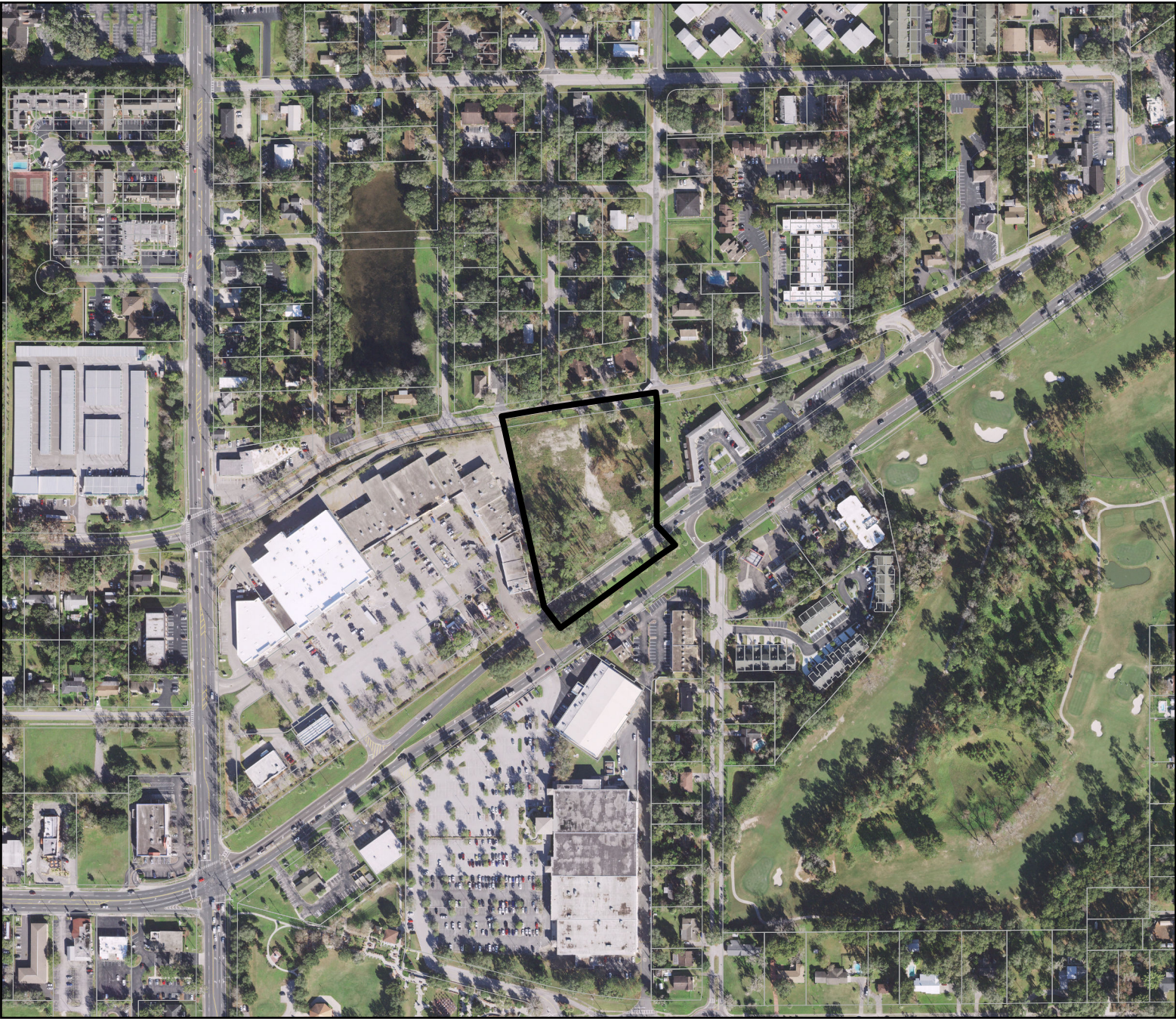
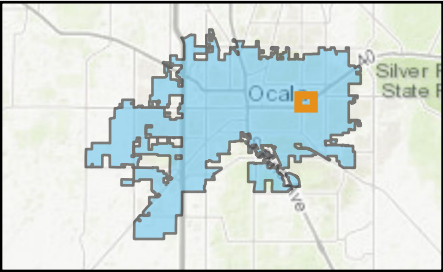


AERIAL MAP

P & Z Meeting: March 14, 2022
Location Map

Case Number: ZON22-44665
Parcel Number: 28170-000-00
Property Size: Approximately 3.98 acres
Land Use Designation: MI-SD - Medium Intensity/Special District
Governmental Use
Zoning: Governmental Use
Proposal: A request to rezone from Government Use, GU,
to Community Business, B-2



Legend

 Property

 Parcels

0 295 590 Feet 



Aerial 2020, Marion County. Acquisition Date: 12/15/2019 - 02/03/2020.
Acquired by Surdex Corporation. Florida Department of Transportation.
Resolution 0.5ft, Band R-G-B. Cloud Cover 0%