

---

# Municipal Separate Storm Sewer Systems (MS4) Presentation

---

June 2, 2026

City Council Meeting

---

**Municipal Separate Storm Sewer Systems (MS4)**  
is a conveyance or system of conveyances that is owned  
by a state, city, town, or other public entity that  
discharges to waters of the United States.

Florida  
Department  
of  
Environmental  
Protection  
(FDEP)

- The City of Ocala is required to have an MS4 permit. The permit is issued for five years, and an annual report must be submitted in years two and four of the permit.
- The permit allows development and implementation of a comprehensive Storm Water Management Program (SWMP) that must include appropriate measures to control the quality of storm water discharged to the waters of the United States.
- The City's compliance with the permit may be audited at any time by the Florida Department of Environmental Protection (FDEP).

**FDEP**  
requires data  
regarding the  
following to  
be listed on  
the annual  
report.

- **Sanitation**
- **Stormwater**
- **Fleet**
- **Water Resources**
- **Code Enforcement**

# The public plays a role through the Public Works Citizen Reporting System

---

- In 2025, there were 116 reports from citizens
- 34 **Sanitation**- missed collection cans, dead animal, litter
- 7 **Stormwater**- manhole, water in the roadway
- 43 **Streets**- pothole, debris in roadway, rights-of-way obstruction, tree issues
- 22 **Traffic**
- 2 **Mosquito**
- 8 **Miscellaneous**

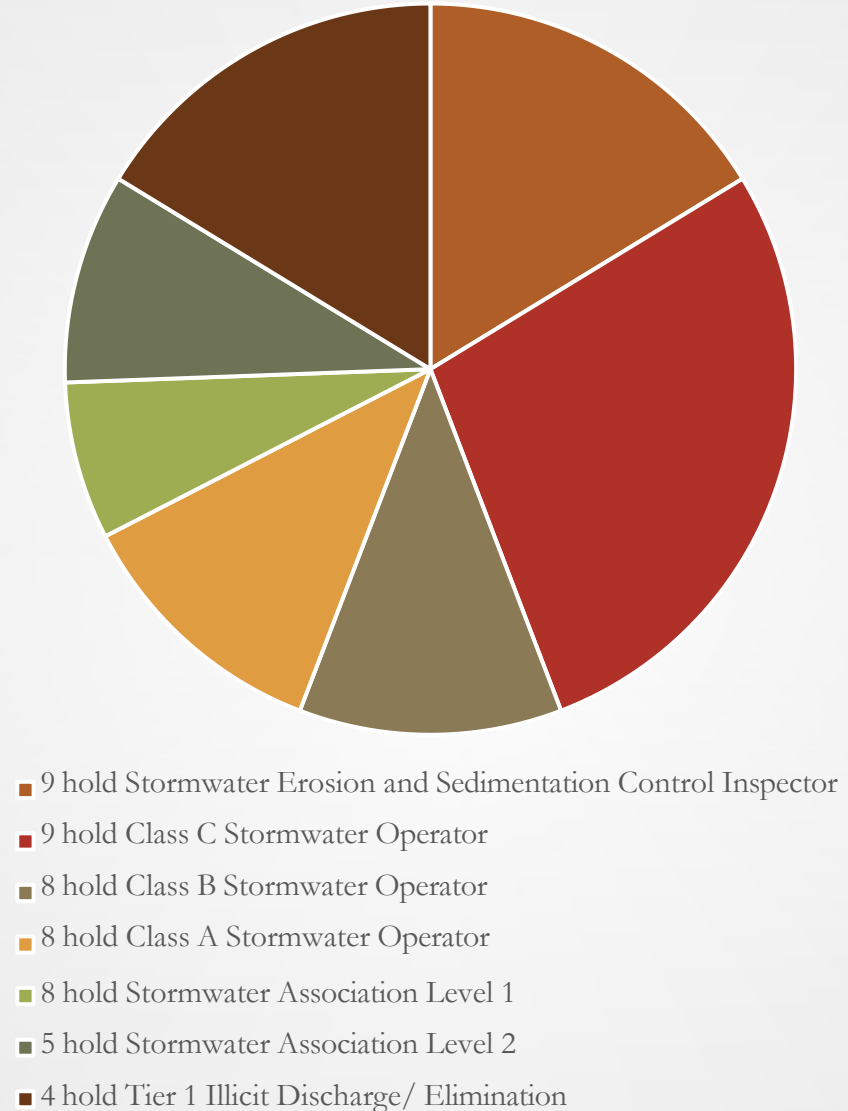
# Stormwater Operations

---

- **All** City and privately owned/ maintained drainage retention areas (DRAs) are inspected for sinkholes, illicit discharge, erosion, trash/debris, and buildup of sedimentation, and are inspected on a rotating schedule annually.
- Only eight City and 30 private DRAs flow into the Florida Department of Transportation right-of-way that eventually flows to the Silver River. This area is known as Half Mile Creek.
- 57 DRAs went through a demucking process by City staff or contracted services, dependent on staffing, length of project, and cost, since January 1, 2025.

Stormwater Operations Certifications help give credit towards permits and ensure we have qualified staff to maintain the stormwater system.

Certifications held by 16 employees



## Sanitation

---

- March 8: 4.26 TONS
- October 4: 5.28 TONS
- **Total 9.54 TONS**



recycle.ocalafl.gov | 352-351-6697

# TIRE WASTE AMNESTY DAY

**Saturday, March 8 | 8 a.m. - 1 p.m.**

City of Ocala residents may bring up to 10 tires for free disposal. A driver's license listing a city address may be required. Tires generated by businesses will not be accepted.

### DROP-OFF LOCATIONS:

- Hampton Aquatic Center, 255 NW Martin Luther King Jr. Blvd.
- SW corner of NE Eighth Ave. and NE 14th St.



# Waste tires



## Sanitation

---

- April 19:  
**9,653 POUNDS**
- September 13:  
**5,846 POUNDS**
- **Total 15,499 POUNDS**

**GFL** HAZARDOUS  
environmental & ELECTRONIC

recycle.ocalafl.gov | 352-351-6697

# WASTE COLLECTION

Saturday, April 19 | 8 a.m. - 1 p.m.

Drop-off located at the SW corner of NE Eighth  
Avenue and NE 14th Street



### Items to be accepted:

- Lawn and garden chemicals
- Paint, paint thinners and gasoline
- Cleaning fluids and solvents
- Fluorescent bulbs
- Used oil, filters and auto batteries
- Pool chemicals
- Cell phones
- Battery chargers
- Computers, keyboards and monitors
- CD, DVD and Blu-Ray players
- Small size printers and fax machines
- Stereos, televisions and gaming consoles



# Household Hazardous Waste

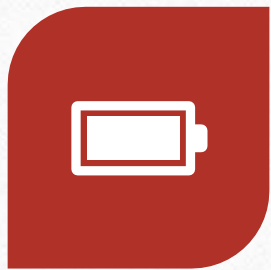
---



Paint

# Fleet Collected and Disposed of

---



869 BATTERIES



7,622 GALLONS  
USED OIL



1,545 USED OIL  
FILTERS



554 GALLONS OF  
ANTIFREEZE

# Fleet Hazardous Waste

---



Used motor oil



Discarded batteries

# Code Enforcement Environmental Officers

## Cleaning practices

- Pour wash water into a utility sink or curbed cleaning facility with a floor drain. Don't pour it out into the parking lot.
- Use dry methods for spill clean-up (sweeping, cat litter, etc.) Don't hose down spills.
- Clean floor mats, filters, and garbage cans in a utility sink or curbed cleaning facility with a floor drain. Don't wash them in a parking lot, alley, sidewalk, or street.
- Recycle grease and oil. Don't pour it into sinks, drains, or onto the parking lot.
- Keep the dumpster area clean and the lid closed. Do not overfill.



# Illicit Discharge

---

As defined by the Environmental Protection Agency (EPA), illicit discharge is any discharge to an MS4 that is not composed entirely of stormwater.

# Illicit discharge



---

## Examples:

Sanitary wastewater

Septic tank effluent

Car wash wastewater

Motor oil disposal

Laundry wastewater

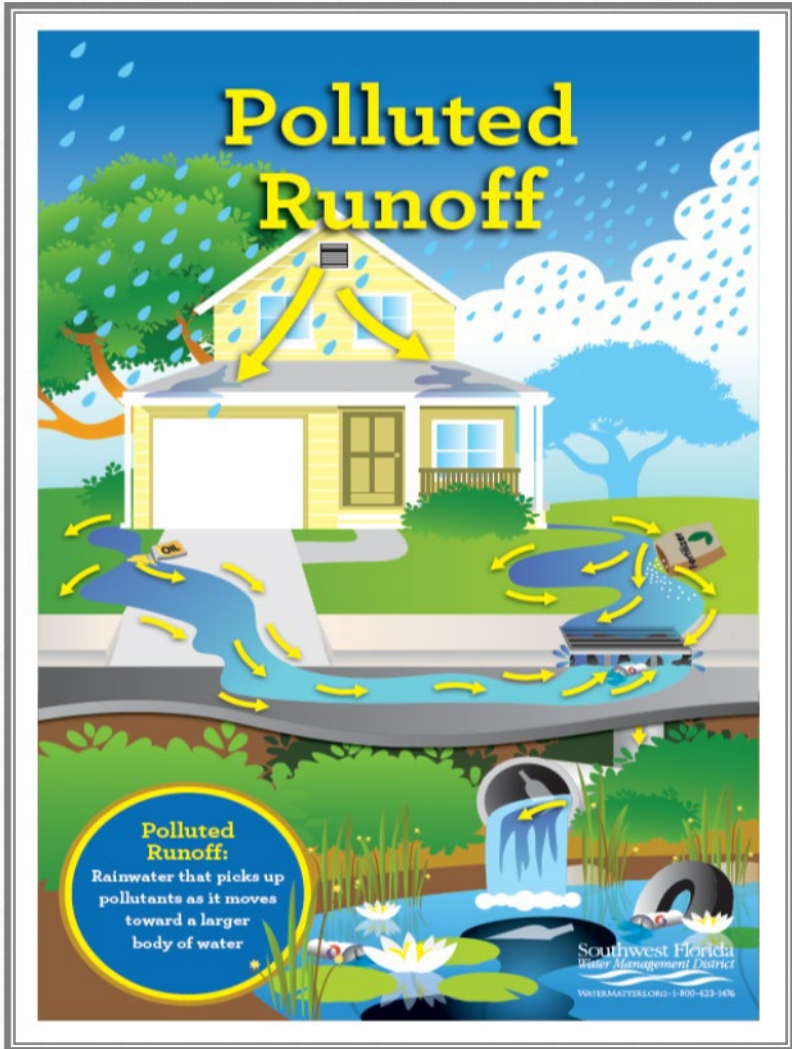
Auto and household toxic disposal

Leaves and yard waste



## Six steps to keep illicit discharge out of our waterways

- Recycle used oil, antifreeze, and batteries. Clean up spills immediately with kitty litter or sawdust, and sweep it up.
- Wash vehicles at a commercial car wash where the dirty water is sent to a waste treatment plant.
- Empty bottles of household cleaners, pesticides, and weed killers should be disposed of according to the labels.
- Grass clippings should be kept out of the roadway and storm drains to avoid algae problems in streams.
- Drop off non-water-based paints, thinners, and solvents at appropriate sites. Water-based paints can be rinsed down the sink, and oil-based paints can be mixed with kitty litter or sawdust and discarded in the trash.
- Bag and collect pet waste. The bag can be discarded in the trash, or its contents can be emptied into the toilet and flushed.



## Cars

- Recycle Old Motor Oil and Antifreeze
- Use Commercial Car Washes
- Repair All Leaks
- DRIVE LESS!

## Lawn

- Choose Slow-Release Fertilizer
- Water-In Your Fertilizer
- Properly Dispose of Hazardous Chemicals
- Pick the Right Pesticides

## Erosion

- Vegetate Bare Spots In Your Yard
- Report Issues with Construction Silt Fences
- Fill Holes Created By Animals
- Report Sinkholes

## Animals

- Whether Your Pet Walks, Flies, or Slithers- YOU Need to Clean Up After It!
- Flush It, Bury It, Bag It, or Trash It

## Nitrates

- Nitrates cause rapid growth of invasive algal blooms in our springs
- Never Dump Anything Down Storm Drains
- Regularly Inspect Your Septic Tank System

# Keep in mind...

---

What we do on land affects the quality of the water we drink and use in so many ways.

Many small sources of pollution add up to cause big water quality problems.

Natural things such as soil, leaves, grass clippings and pet waste can cause water pollution.

Automobiles and other vehicles cause water and air pollution.

# Questions/Comments

