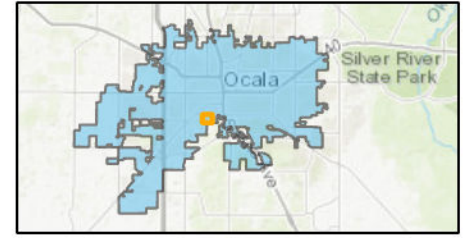


# AERIAL MAP

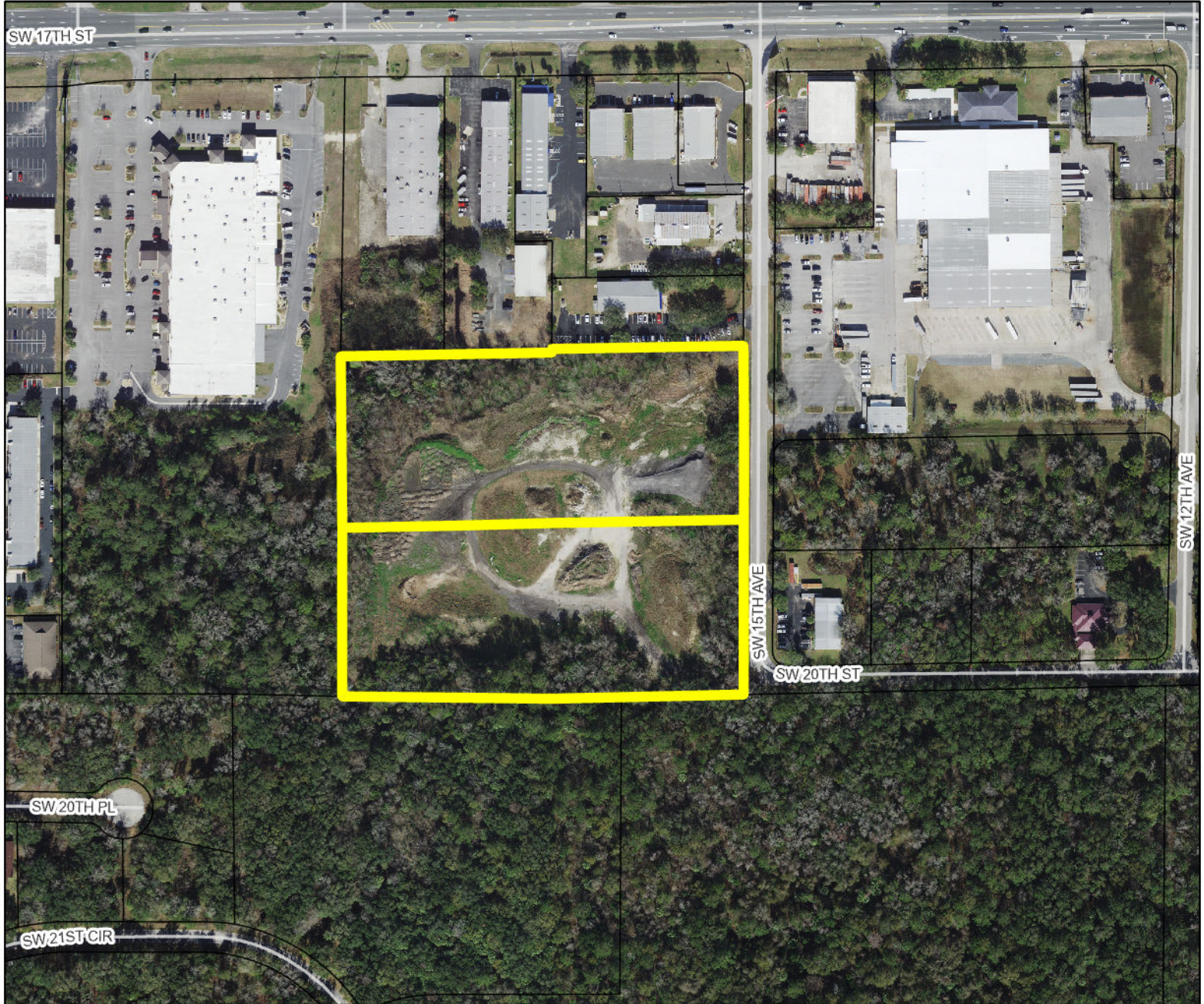
P&Z Meeting: February 10, 2025


Case Number: ZON25-0001  
Parcel: 23656-017-00 & 23656-017-16

## Location Map



Property Size: Approximately 12.42 acres  
Land Use Designation: Employment Center  
Zoning: M-1, Light Industrial  
Proposal: A request to rezone from M-1, Light Industrial, to G-U, Governmental Use.



-  Parcels
-  Subject Property



Prepared by the City of Ocala  
Growth Management Department  
by ewjohnson on 1/22/2025