

SKETCH OF DESCRIPTION

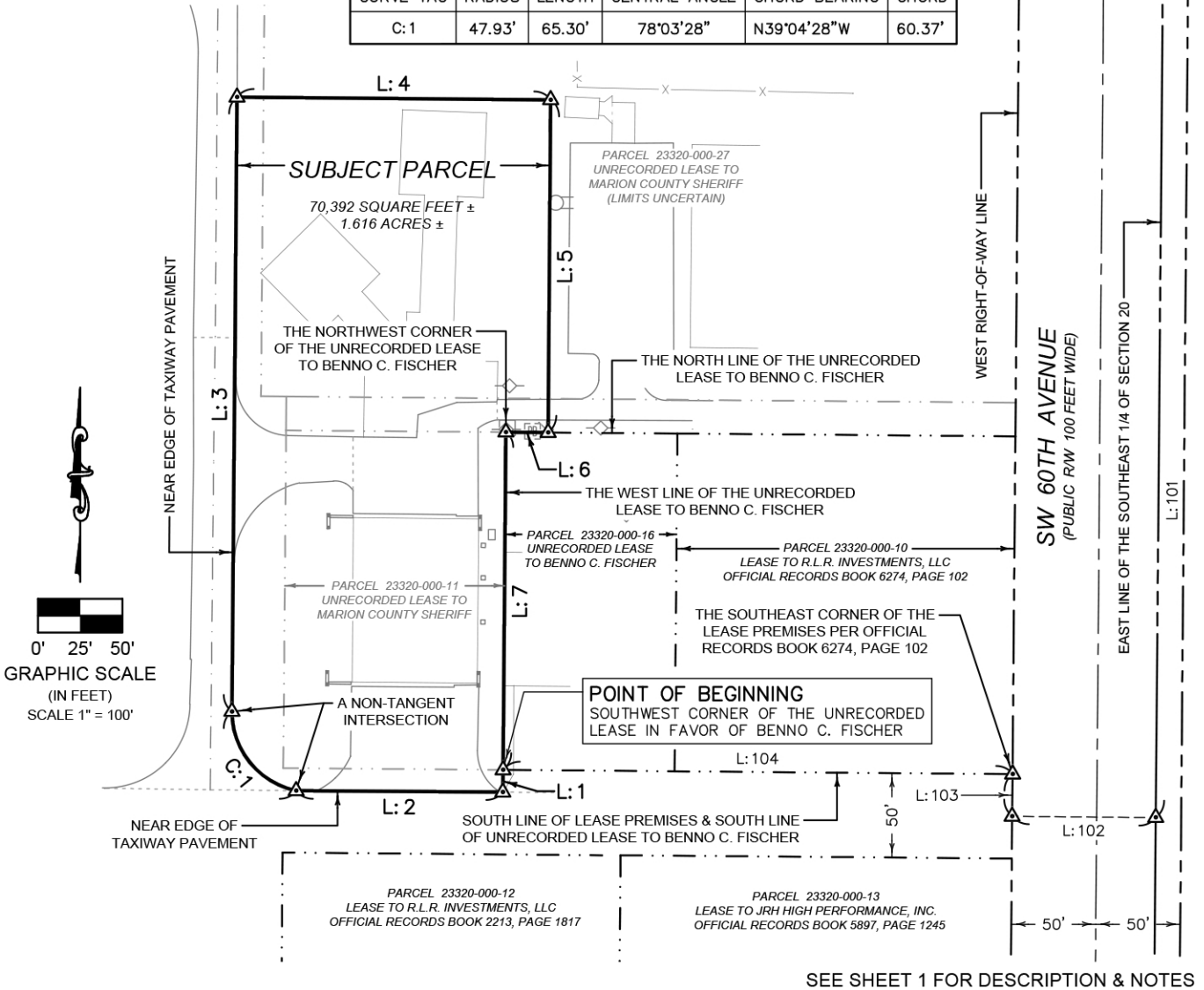
EXHIBIT A 2 OF 2

BOUNDARY LINE TABLE (PER DESCRIPTION)		
LINE TAG	BEARING	DISTANCE
L:1	S00°26'43"W	13.16'
L:2	N89°38'43"W	122.29'
L:3	N00°27'34"E	363.79'
L:4	S89°33'17"E	185.62'
L:5	S00°26'43"W	197.00'
L:6	N89°33'17"W	25.00'
L:7	S00°26'43"W	200.00'

REFERENCE LINE TABLE (PER DESCRIPTION)		
LINE TAG	BEARING	DISTANCE
L:101	S00°26'43"W	812.52'
L:102	N89°33'17"W	85.00'
L:103	N00°26'43"E	25.00'
L:104	N89°33'17"W	301.60'

BOUNDARY CURVE TABLE (PER DESCRIPTION)					
CURVE TAG	RADIUS	LENGTH	CENTRAL ANGLE	CHORD BEARING	CHORD
C:1	47.93'	65.30'	78°03'28"	N39°04'28"W	60.37'

POINT OF COMMENCEMENT
THE NORTHEAST CORNER OF THE
SOUTHEAST 1/4 OF SECTION 20,
TOWNSHIP 15 SOUTH, RANGE 21 EAST



"RESTATED LEASE PARCEL PER AMENDMENT NO. 1 TO MARION COUNTY SHERIFF'S HANGAR LEASE (UNRECORDED)"

SECTION:	20	TOWNSHIP:	15 S	RANGE:	21 E
DRAWN:	RKR	CHECKED:	RKR		
DATE:	02.29.2024	SCALE:	1" = 100'		
FIELD BOOK:	N/A	PAGE:	N/A		
HORIZONTAL DATUM:	FL83-WF				
REVISIONS:					
NO.:	DATE & DESCRIPTION:		BY:		
FILE NO.:	23-013081.01				
WORK ORDER:	23-013081				

CITY OF OCALA
CITY ENGINEER'S OFFICE
SURVEY DIVISION

1805 NE 30TH AVENUE - BUILDING 700A
OCALA, FLORIDA 34470
(352) 351-6772 (VOICE) (351) 351-6726 (FAX)

PREPARED FOR:
OCALA INTERNATIONAL AIRPORT

\\ocalati.org\IPW\SD\Survey\WORK ORDER\Survey\Airport\2023\23-013081 MCSO Lease\dwg\23-013081 MCSO Lease SOD.dwg, 02 Sketch, 2/29/2024 4:16:10 PM