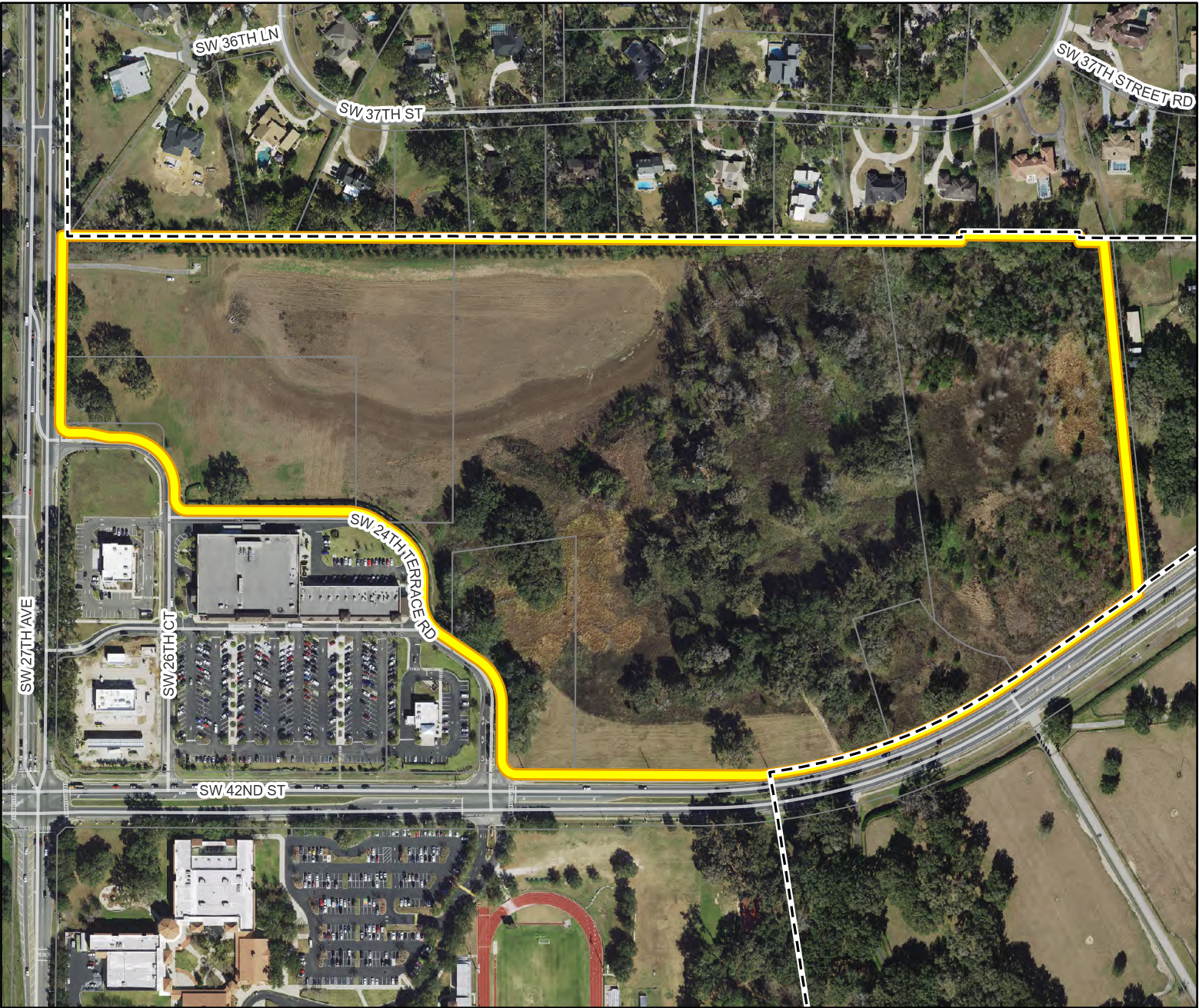
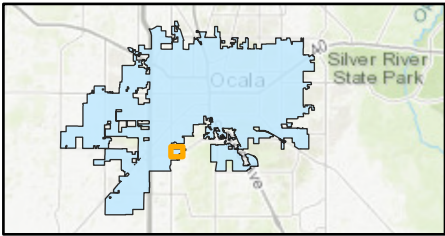


AERIAL MAP

P&Z Meeting: July 8, 2024

Case Number: PD24-45565
Parcel: 23930-000-00; 23930-002-00; 23930-0003-00; 23930-003-01; 23930-003-03; 23930-005-00
Property Size: Approximately 52.82 acres
Land Use Designation: Neighborhood
Zoning: PUD-07, Planned Unit Development 7-Units
Proposal: A request to rezone from PUD-07, Planned Unit Development, to PD, Planned Development

Location Map



-  Subject Property
-  Parcels
-  City Limits

0 500 Feet

