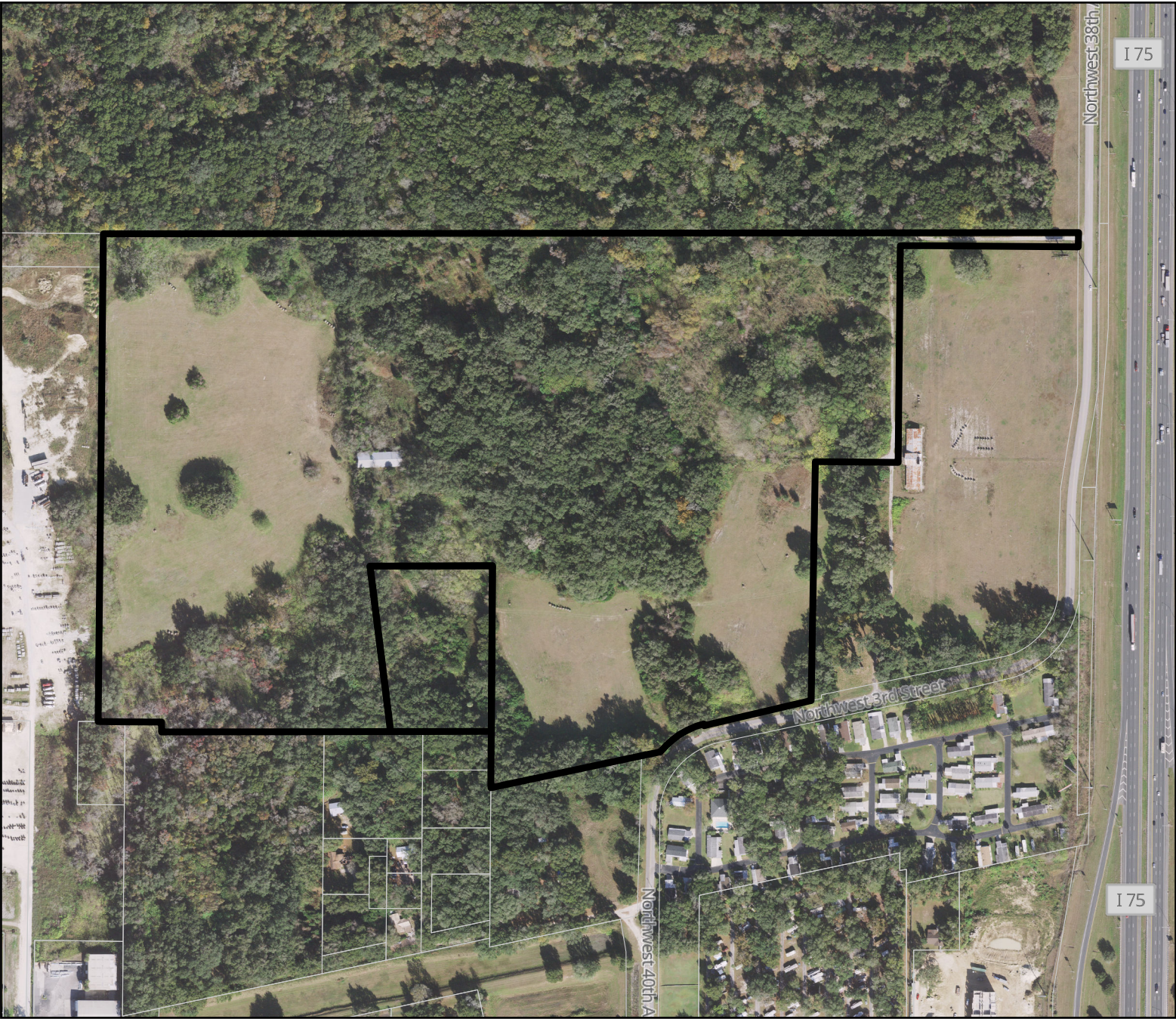
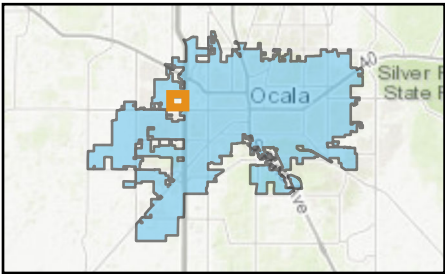


AERIAL MAP

Case Number: ZON21-44529  
Parcel Number: 22844-002-00 & 22844-002-03  
Property Size: Approximately 71.58 acres  
Land Use Designation: CD, Commerce District, & EC, Employment Center (County)  
Zoning: A-1, General Ag, M-1, Light Industrial and R-E, Residential Estate (County)  
Proposal: Request to rezone from A-1, General Ag, M-1, Light Industrial and R-E, Residential Estate (County), to M-2, Medium Industrial (City).



Legend

 Property

 Parcels

0 295 590 Feet 



Prepared by the City of Ocala  
Growth Management Department

Aerial 2020, Marion County. Acquisition Date: 12/15/2019 - 02/03/2020.  
Acquired by Surdex Corporation. Florida Department of Transportation.  
Resolution 0.5ft, Band R-G-B. Cloud Cover 0%