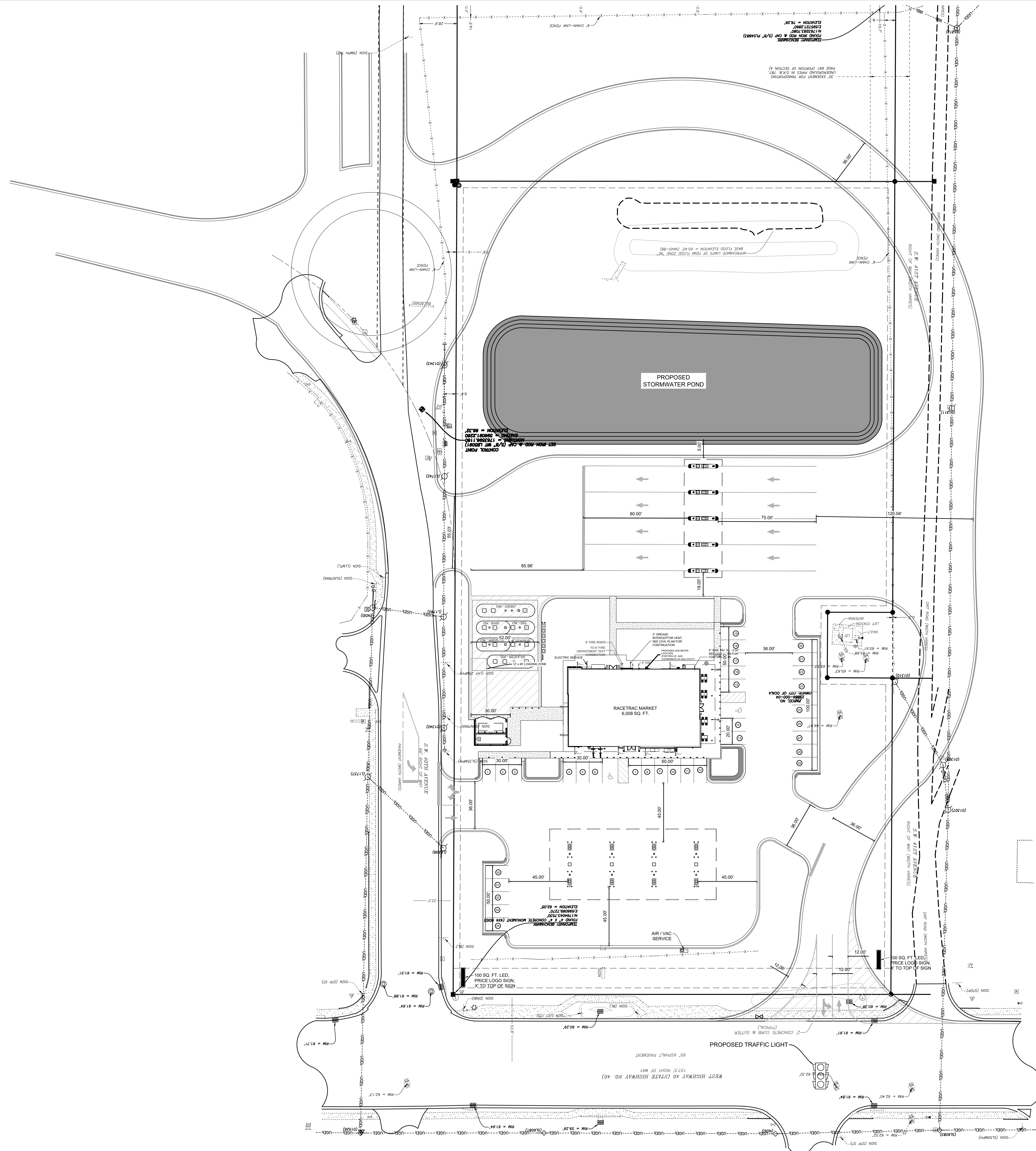




Know what's below.
Call before you dig.



- SITE DESIGN NOTES:**
- 1 MINIMUM STALL DIMENSION 9.5' X 10'
 - 2 25' TANK SETBACK ADJACENT TO RESIDENTIAL
 - 3 MAX NUMBER OF STALLS IN A ROW 10
 - 4 MINIMUM LOADING ZONE DIMENSION 12' X 45'
 - 5 INTERIOR LANDSCAPE ISLANDS 360 SQFT MINIMUM
 - 6 BICYCLE PARKING 5% OF TOTAL PARKING NUMBER
 - 7 1 SQFT OF LANDSCAPING FOR EACH 50 SQFT OF PAVEMENT
 - 8 20% OPEN SPACE
 - 9 MAX SIGN SF 100 OR 2 SQFT FOR EACH PROPERTY FRONT FOOT, WHICHEVER IS GREATER
 - 10 2 SIGNS ARE ALLOWED
 - 11 12' DRIVEWAY SETBACK FROM ADJACENT PROPERTY
 - 12 A LEFT TURN LANE WILL BE REQUIRED NORTH BOUND FROM 40TH AVE TO W. SILVER SPRINGS BLVD.
 - 13 REMOVE EXISTING LEFT MOVEMENT FROM THE 40TH AVE
 - 14 A TRAFFIC LIGHT IS PROPOSED AT 40 AVE AND W. SILVER SPRINGS BLVD.

SITE DESIGN STANDARDS

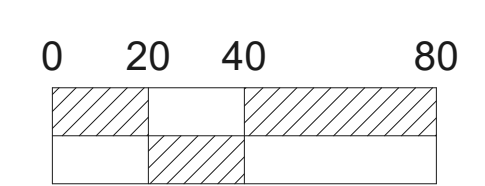
BLDG STBK	REQUIRED	DEVIATION
FRONT	20	-
REAR	0	-
SIDE	0	-
SIDE	0	-

LNDS STBK	REQUIRED	DEVIATION
FRONT	5	-
REAR	5	-
SIDE (RESIDENTIAL)	25	-
SIDE	5	-


SIGN STBK	REQUIRED	DEVIATION
FRONT	5	-
SIDE	5	-

ON-SITE USE SUMMARY

ITEM	QUANTITY	UNITS
6" CONCRETE	40382	FT ²
8" CONCRETE	44224	FT ²
ACCESS ROADS	79174	FT ²
CURB	4055	LF

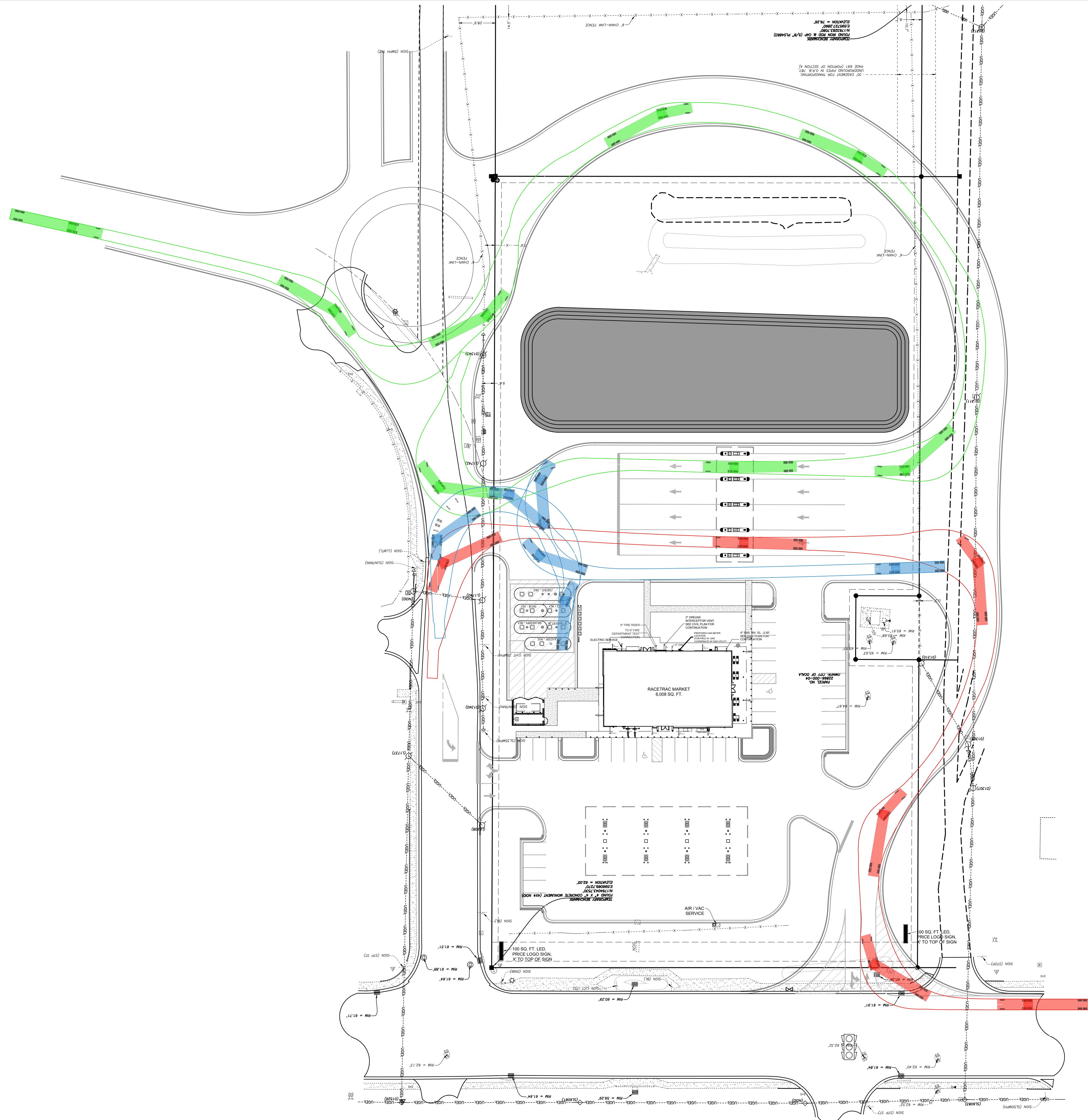


CONTACT RACETRAC PETROLEUM, INC. PROJECT MANAGER PRIOR TO ANY REVISIONS TO THE PLAN SUPPLIED BY RACETRAC PETROLEUM, INC.

THESE PLANS ARE SUBJECT TO FEDERAL COPYRIGHT LAWS. ANY USE OF SAME WITHOUT THE EXPRESSED WRITTEN PERMISSION OF RACETRAC PETROLEUM, INC. IS PROHIBITED.		NO.	DATE
 RACETRAC PETROLEUM, INC. 1704 RTE 60 (E) OCALA WEST SUITE 300 ATLANTA, GA 30389 (770) 431-7600		SITE PLAN OCALA WEST 4040 SILVER SPRINGS BLVD OCALA, FL MARION COUNTY	
		DRAWN-BY DATE SCALE DRAWING NAME: 1704 - RTE60(E) OCALA WEST V2.dwg	DESIMPSON 6/7/2024 1" = 40' RACETRAC PETROLEUM, INC.
SHEET NO.	VERSION		



Know what's below.
Call before you dig.



SITE DESIGN NOTES:

- 1 MINIMUM STALL DIMENSION 9.5' X 10'
- 2 25' TANK SETBACK ADJACENT TO RESIDENTIAL
- 3 MAX NUMBER OF STALLS IN A ROW 10
- 4 MINIMUM LOADING ZONE DIMENSION 12' X 45'
- 5 INTERIOR LANDSCAPE ISLANDS 360 SQFT MINIMUM
- 6 BICYCLE PARKING 5% OF TOTAL PARKING NUMBER
- 7 1 SQFT OF LANDSCAPING FOR EACH 50 SQFT OF PAVEMENT.
- 8 20% OPEN SPACE
- 9 MAX SIGN SF 100 OR 2 SQFT FOR EACH PROPERTY FRONT FOOT, WHICHEVER IS GREATER
- 10 2 SIGNS ARE ALLOWED
- 11 12' DRIVEWAY SETBACK FROM ADJACENT PROPERTY
- 12 A LEFT TURN LANE WILL BE REQUIRED NORTH BOUND FROM 40TH AVE TO W. SILVER SPRINGS BLVD.
- 13 REMOVE EXISTING LEFT MOVEMENT FROM THE 40TH AVE
- 14 A TRAFFIC LIGHT IS PROPOSED AT 40 AVE AND W. SILVER SPRINGS BLVD.

SITE DESIGN STANDARDS

BLDG STBK	REQUIRED	DEVIATION
FRONT	20	-
REAR	0	-
SIDE	0	-
SIDE	0	-

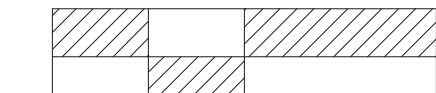
LNDS STBK	REQUIRED	DEVIATION
FRONT	5	-
REAR	5	-
SIDE (RESIDENTIAL)	25	-
SIDE	5	-

SIGN STBK	REQUIRED	DEVIATION
FRONT	5	-
SIDE	5	-

ON-SITE USE SUMMARY

ITEM	QUANTITY	UNITS
6" CONCRETE		FT ²
8" CONCRETE		FT ²
CURB		LF

0 20 40 80



THESE PLANS ARE SUBJECT TO FEDERAL COPYRIGHT LAWS. ANY USE OF SAME WITHOUT THE EXPRESSED WRITTEN PERMISSION OF RACETRAC PETROLEUM, INC. IS PROHIBITED.



RACETRAC PETROLEUM, INC.
1704 - RTE FC(ED) Ocala, FL
SUITE 300 ATLANTA, GA 30389
(770) 431-7600

SITE PLAN

OCALA WEST
4040 SILVER SPRINGS BLVD
OCALA, FL
MARION COUNTY

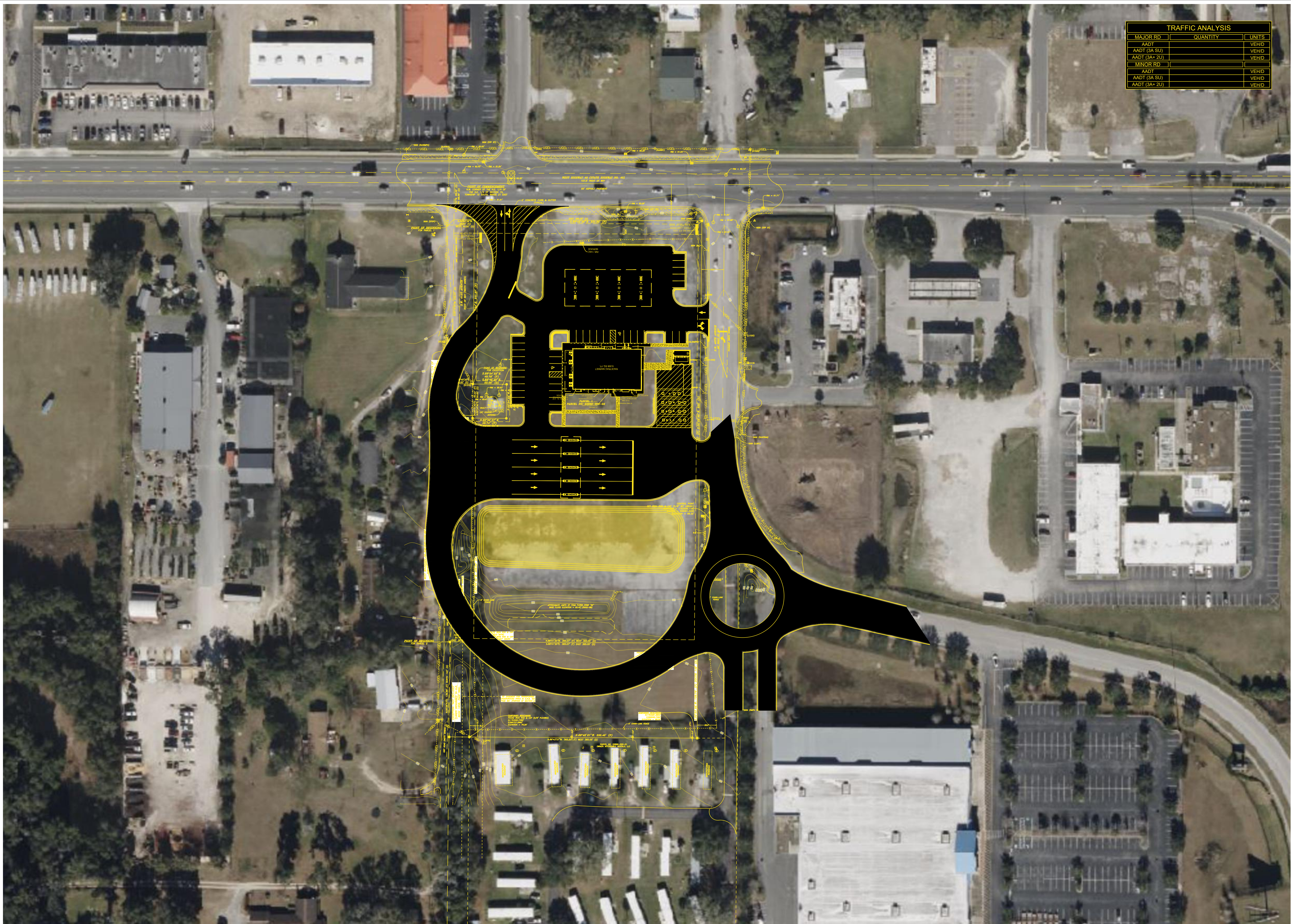
DRAWN-BY DESIMPSON
DATE 6/7/2024
SCALE 1" = 40'
DRAWING NAME:
1704 - RTE FC(ED) Ocala West V2.dwg

SHEET NO. VERSION

NO.

DATE

CONTACT RACETRAC PETROLEUM, INC. PROJECT MANAGER PRIOR TO ANY REVISIONS TO THE PLAN SUPPLIED BY RACETRAC PETROLEUM, INC.



TRAFFIC ANALYSIS		
MAJOR RD	QUANTITY	UNITS
AADT		VEHD
AADT (3A SU)		VEHD
AADT (3A+ 2U)		VEHD
MINOR RD		
AADT		VEHD
AADT (3A SU)		VEHD
AADT (3A+ 2U)		VEHD

NO.	DATE

THESE PLANS ARE SUBJECT TO FEDERAL COPYRIGHT LAWS. ANY USE OF SAME WITHOUT THE EXPRESSED WRITTEN PERMISSION OF RACETRAC PETROLEUM, INC. IS PROHIBITED.

RaceTrac
 RACETRAC PETROLEUM, INC.
 4010 FOXGLOVE AVENUE
 SUITE 300 ATLANTA, GA 30359
 (770) 531-7600

SITE PLAN	OCALA WEST
4040 SILVER SPRINGS BLVD OCALA, FL MARION COUNTY	

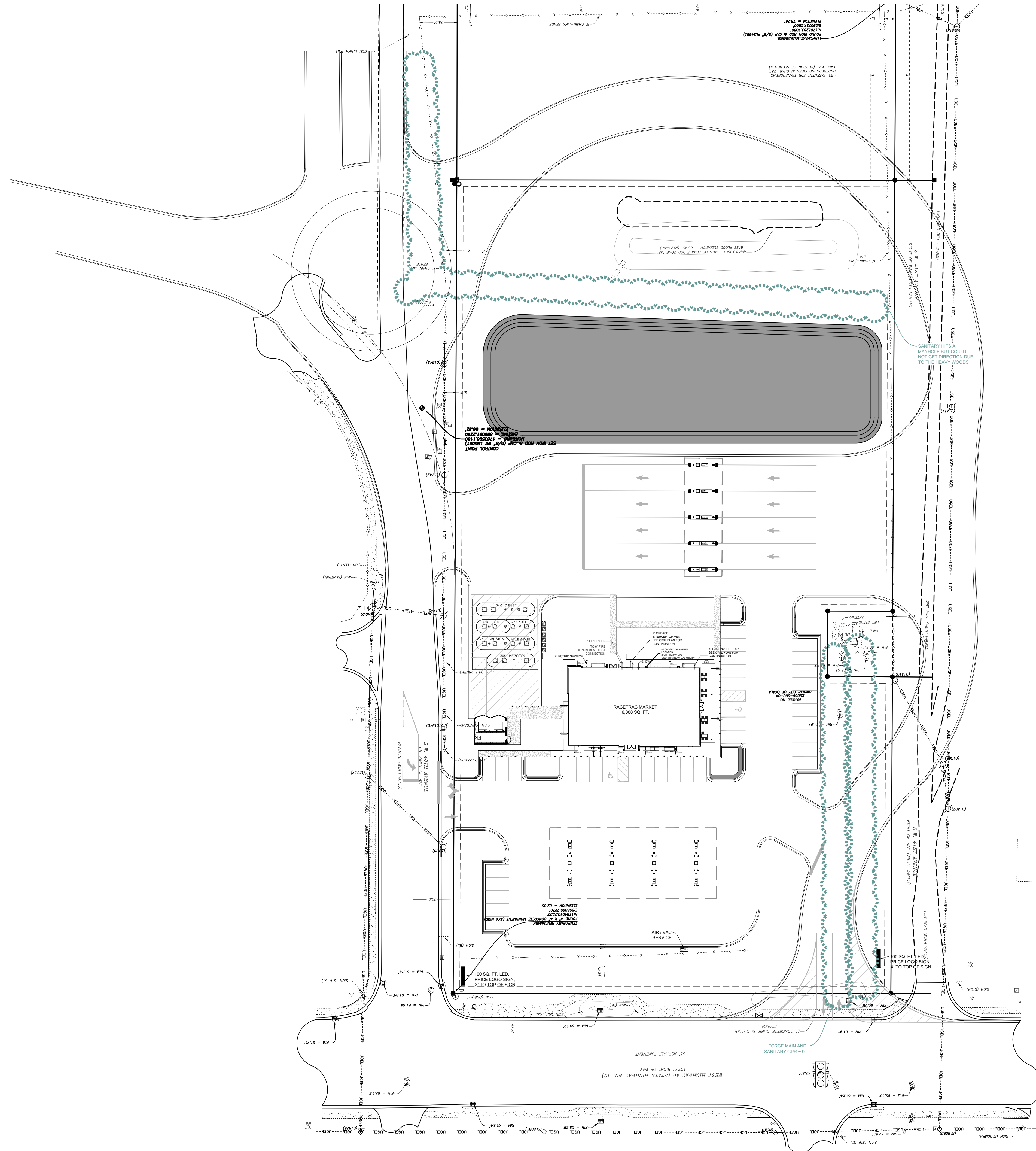
DRAWN-BY: DESIMPSON
 DATE: 6/7/2024
 SCALE:

DRAWING NAME:
 T704 - RTE(CED) Ocala West V2.dwg

SHEET NO.	VERSION



Know what's below.
Call before you dig.



CONTACT RACETRAC PETROLEUM, INC. PROJECT MANAGER PRIOR TO ANY REVISIONS TO THE PLAN SUPPLIED BY RACETRAC PETROLEUM, INC.

EXISTING UTILITY PLAN		DRAWN-BY		DATE	
OCALA WEST		DESIMPSON		6/7/2024	
4040 SILVER SPRINGS BLVD OCALA, FL MARION COUNTY		SCALE		1" = 40'	
		DRAWING NAME:		1704 - RTEFC(ED) Ocala West V2.dwg	
SHEET NO.		VERSION		NO.	
				DATE	



 THESE PLANS ARE SUBJECT TO FEDERAL COPYRIGHT LAWS. ANY USE OF SAME WITHOUT THE EXPRESSED WRITTEN PERMISSION OF RACETRAC PETROLEUM, INC. IS PROHIBITED.

RACETRAC PETROLEUM, INC.
 3000 W. STATE ST.
 SUITE 300 ATLANTA, GA 30359
 (770) 431-7600