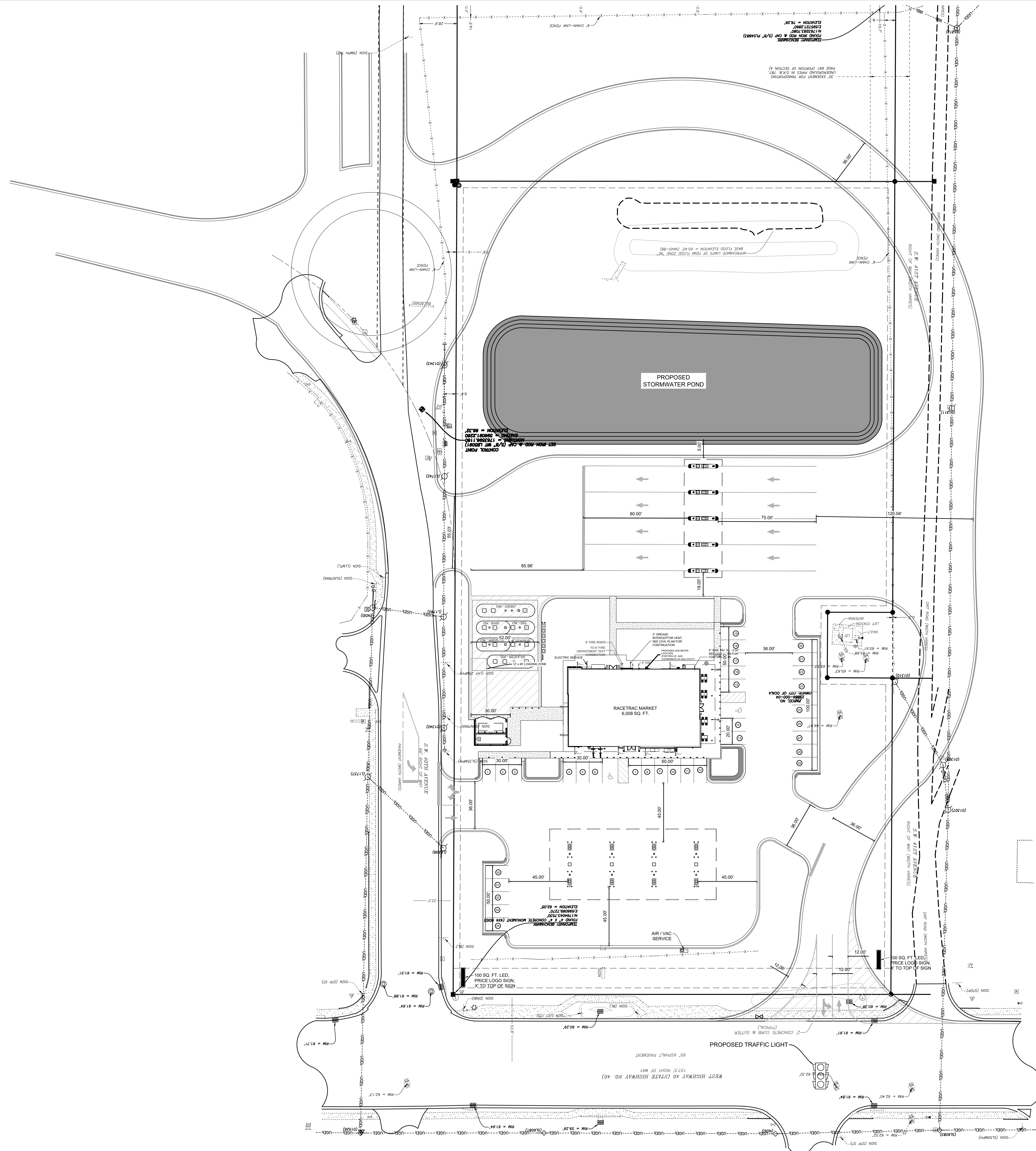




Know what's below.
Call before you dig.



- SITE DESIGN NOTES:**
- 1 MINIMUM STALL DIMENSION 9.5' X 10'
 - 2 25' TANK SETBACK ADJACENT TO RESIDENTIAL
 - 3 MAX NUMBER OF STALLS IN A ROW 10
 - 4 MINIMUM LOADING ZONE DIMENSION 12' X 45'
 - 5 INTERIOR LANDSCAPE ISLANDS 360 SQFT MINIMUM
 - 6 BICYCLE PARKING 5% OF TOTAL PARKING NUMBER
 - 7 1 SQFT OF LANDSCAPING FOR EACH 50 SQFT OF PAVEMENT
 - 8 20% OPEN SPACE
 - 9 MAX SIGN SF 100 OR 2 SQFT FOR EACH PROPERTY FRONT FOOT, WHICHEVER IS GREATER
 - 10 2 SIGNS ARE ALLOWED
 - 11 12' DRIVEWAY SETBACK FROM ADJACENT PROPERTY
 - 12 A LEFT TURN LANE WILL BE REQUIRED NORTH BOUND FROM 40TH AVE TO W. SILVER SPRINGS BLVD.
 - 13 REMOVE EXISTING LEFT MOVEMENT FROM THE 40TH AVE
 - 14 A TRAFFIC LIGHT IS PROPOSED AT 40 AVE AND W. SILVER SPRINGS BLVD.

SITE DESIGN STANDARDS

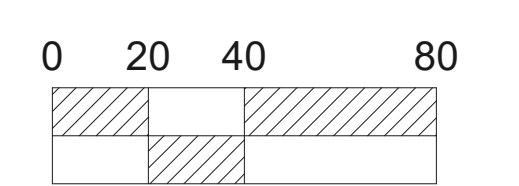
BLDG STBK	REQUIRED	DEVIATION
FRONT	20	-
REAR	0	-
SIDE	0	-
SIDE	0	-

LNDS STBK	REQUIRED	DEVIATION
FRONT	5	-
REAR	5	-
SIDE (RESIDENTIAL)	25	-
SIDE	5	-

SIGN STBK	REQUIRED	DEVIATION
FRONT	5	-
SIDE	5	-

ON-SITE USE SUMMARY

ITEM	QUANTITY	UNITS
6" CONCRETE	40382	FT ²
8" CONCRETE	44224	FT ²
ACCESS ROADS	79174	FT ²
CURB	4055	LF



CONTACT RACETRAC PETROLEUM, INC. PROJECT MANAGER PRIOR TO ANY REVISIONS TO THE PLAN SUPPLIED BY RACETRAC PETROLEUM, INC.

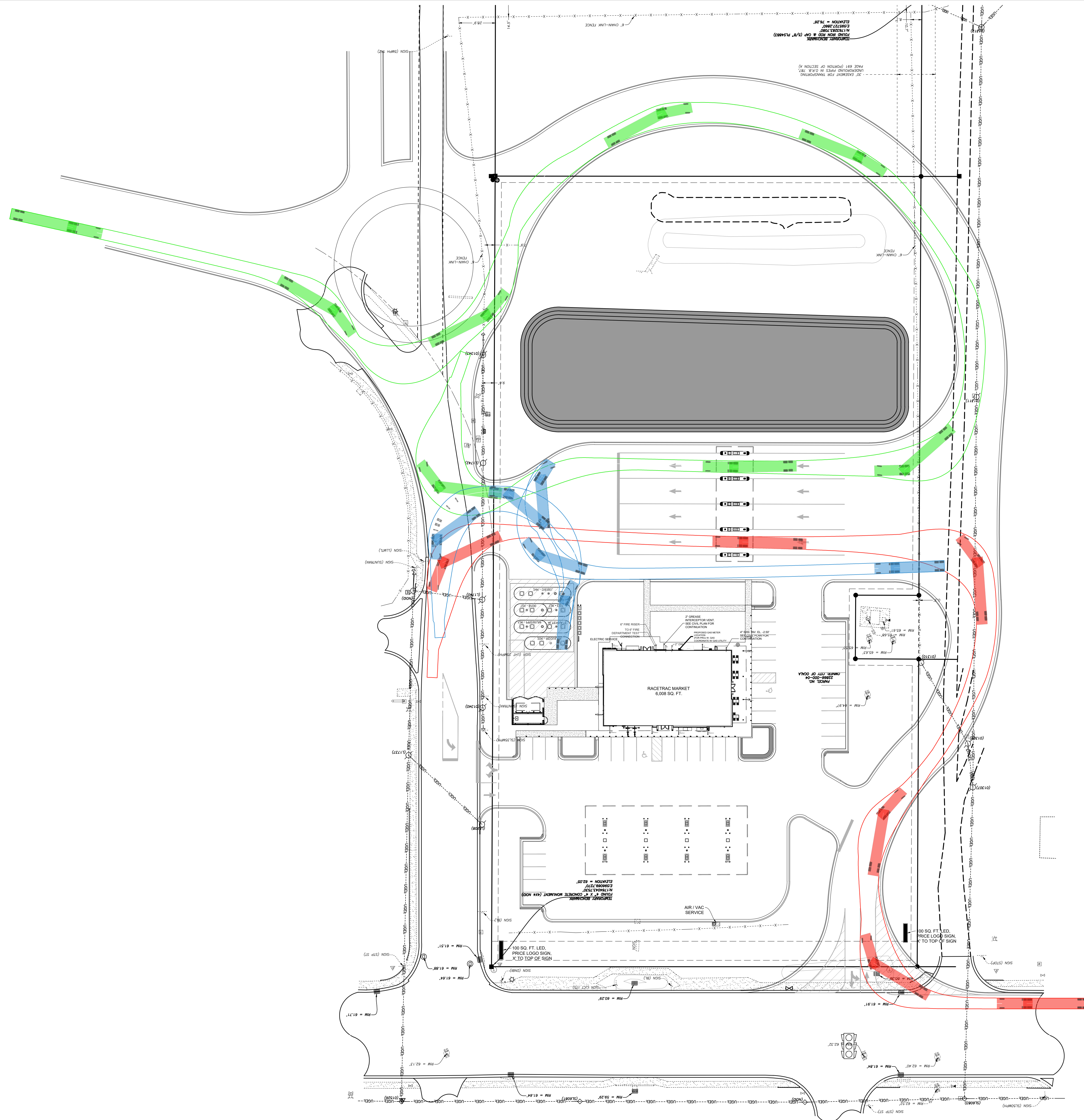
SITE PLAN		DATE	
OCALA WEST			
4040 SILVER SPRINGS BLVD			
OCALA, FL			
MARION COUNTY			
DRAWN-BY	DESIMPSON	DATE	6/7/2024
SCALE	1" = 40'	DRAWING NAME:	1704 - RTEFC(ED) Ocala West V2.dwg
SHEET NO.	VERSION	NO.	DATE

THESE PLANS ARE SUBJECT TO FEDERAL COPYRIGHT LAWS. ANY USE OF SAME WITHOUT THE EXPRESSED WRITTEN PERMISSION OF RACETRAC PETROLEUM, INC. IS PROHIBITED.

RACETRAC PETROLEUM, INC.
1704 - RTEFC(ED) Ocala West
SUITE 300 ATLANTA, GA 30389
(770) 437-7600



Know what's below.
Call before you dig.



- SITE DESIGN NOTES:**
- 1 MINIMUM STALL DIMENSION 9.5' X 10'
 - 2 25' TANK SETBACK ADJACENT TO RESIDENTIAL
 - 3 MAX NUMBER OF STALLS IN A ROW 10
 - 4 MINIMUM LOADING ZONE DIMENSION 12' X 45'
 - 5 INTERIOR LANDSCAPE ISLANDS 360 SQFT MINIMUM
 - 6 BICYCLE PARKING 5% OF TOTAL PARKING NUMBER
 - 7 1 SQFT OF LANDSCAPING FOR EACH 50 SQFT OF PAVEMENT
 - 8 20% OPEN SPACE
 - 9 MAX SIGN SF 100 OR 2 SQFT FOR EACH PROPERTY FRONT FOOT, WHICHEVER IS GREATER
 - 10 2 SIGNS ARE ALLOWED
 - 11 12' DRIVEWAY SETBACK FROM ADJACENT PROPERTY
 - 12 A LEFT TURN LANE WILL BE REQUIRED NORTH BOUND FROM 40TH AVE TO W. SILVER SPRINGS BLVD.
 - 13 REMOVE EXISTING LEFT MOVEMENT FROM THE 40TH AVE
 - 14 A TRAFFIC LIGHT IS PROPOSED AT 40 AVE AND W. SILVER SPRINGS BLVD.

SITE DESIGN STANDARDS

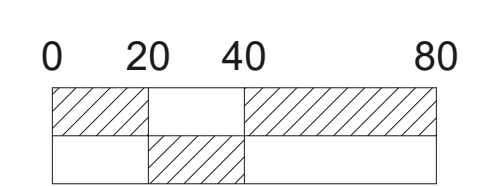
BLDG STBK	REQUIRED	DEVIATION
FRONT	20	-
REAR	0	-
SIDE	0	-
SIDE	0	-

LNDS STBK	REQUIRED	DEVIATION
FRONT	5	-
REAR	5	-
SIDE (RESIDENTIAL)	25	-
SIDE	5	-


SIGN STBK	REQUIRED	DEVIATION
FRONT	5	-
SIDE	5	-

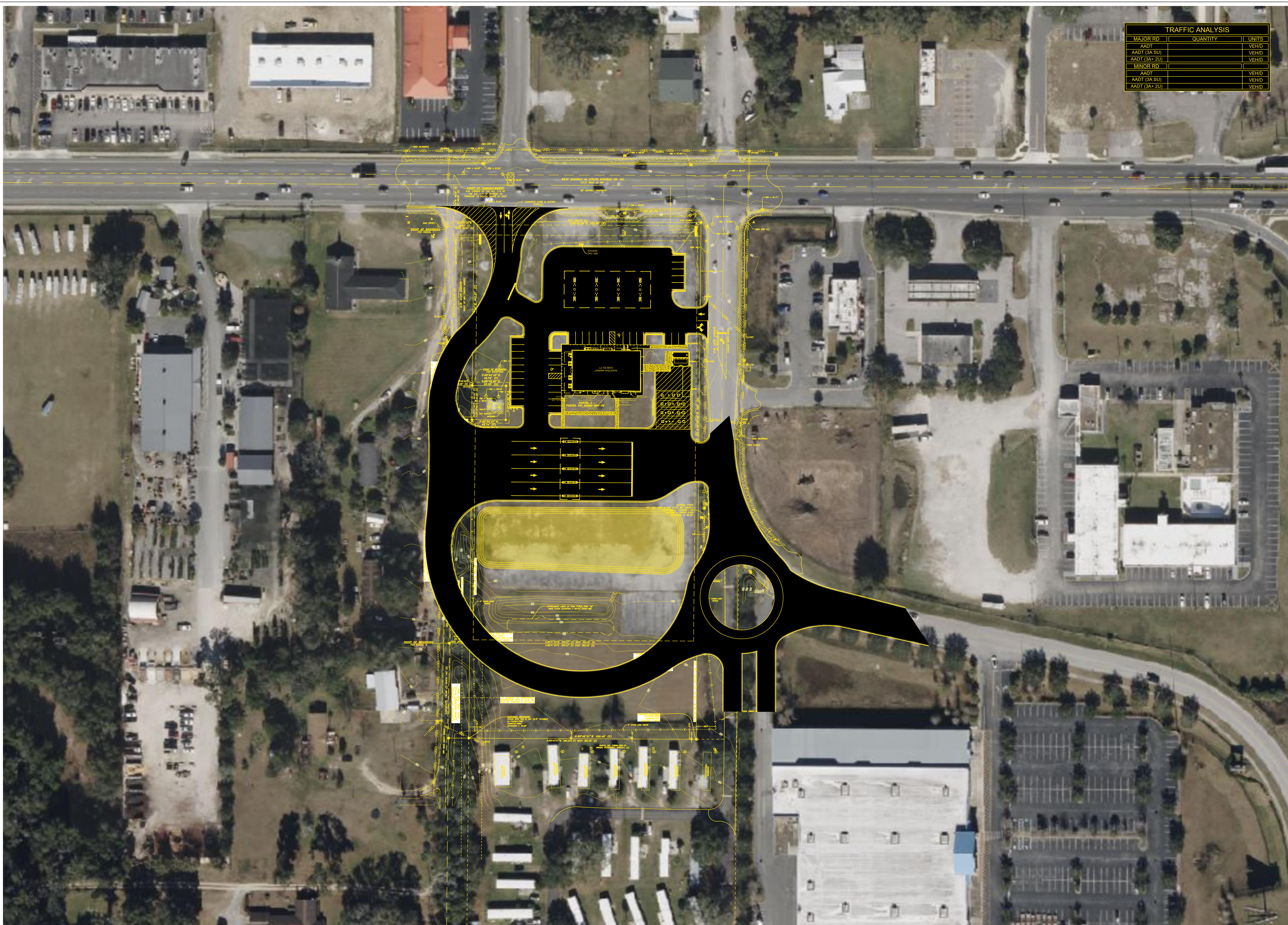
ON-SITE USE SUMMARY

ITEM	QUANTITY	UNITS
6" CONCRETE		FT ²
8" CONCRETE		FT ²
CURB		LF



CONTACT RACETRAC PETROLEUM, INC. PROJECT MANAGER PRIOR TO ANY REVISIONS TO THE PLAN SUPPLIED BY RACETRAC PETROLEUM, INC.

THESE PLANS ARE SUBJECT TO FEDERAL COPYRIGHT LAWS. ANY USE OF SAME WITHOUT THE EXPRESSED WRITTEN PERMISSION OF RACETRAC PETROLEUM, INC. IS PROHIBITED.		NO.	DATE
 RACETRAC PETROLEUM, INC. 1704 RTE 60 (E) Ocala, FL 32669 (770) 437-7600			
SITE PLAN	OCALA WEST		
	4040 SILVER SPRINGS BLVD OCALA, FL MARION COUNTY		
DRAWN-BY	DESIMPSON		
DATE	6/7/2024		
SCALE	1" = 40'		
DRAWING NAME:	1704 - RTE 60 (E) Ocala West V2.dwg		
SHEET NO.	VERSION		



TRAFFIC ANALYSIS		
MAJOR RD	QUANTITY	UNITS
AADT		VEHD
AADT (3A SU)		VEHD
AADT (3A+ 2U)		VEHD
MINOR RD		
AADT		VEHD
AADT (3A SU)		VEHD
AADT (3A+ 2U)		VEHD

NO.	DATE

THESE PLANS ARE SUBJECT TO FEDERAL COPYRIGHT LAWS. ANY USE OF SAME WITHOUT THE EXPRESSED WRITTEN PERMISSION OF RACETRAC PETROLEUM, INC. IS PROHIBITED.



RACETRAC PETROLEUM, INC.
 300 ATLANTA, GA 30389
 (770) 531-7600

SITE PLAN
Ocala West
4040 Silver Springs Blvd
Ocala, FL
Marion County

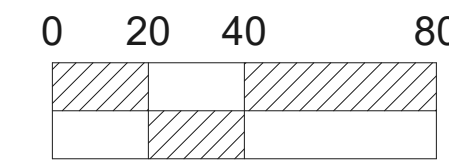
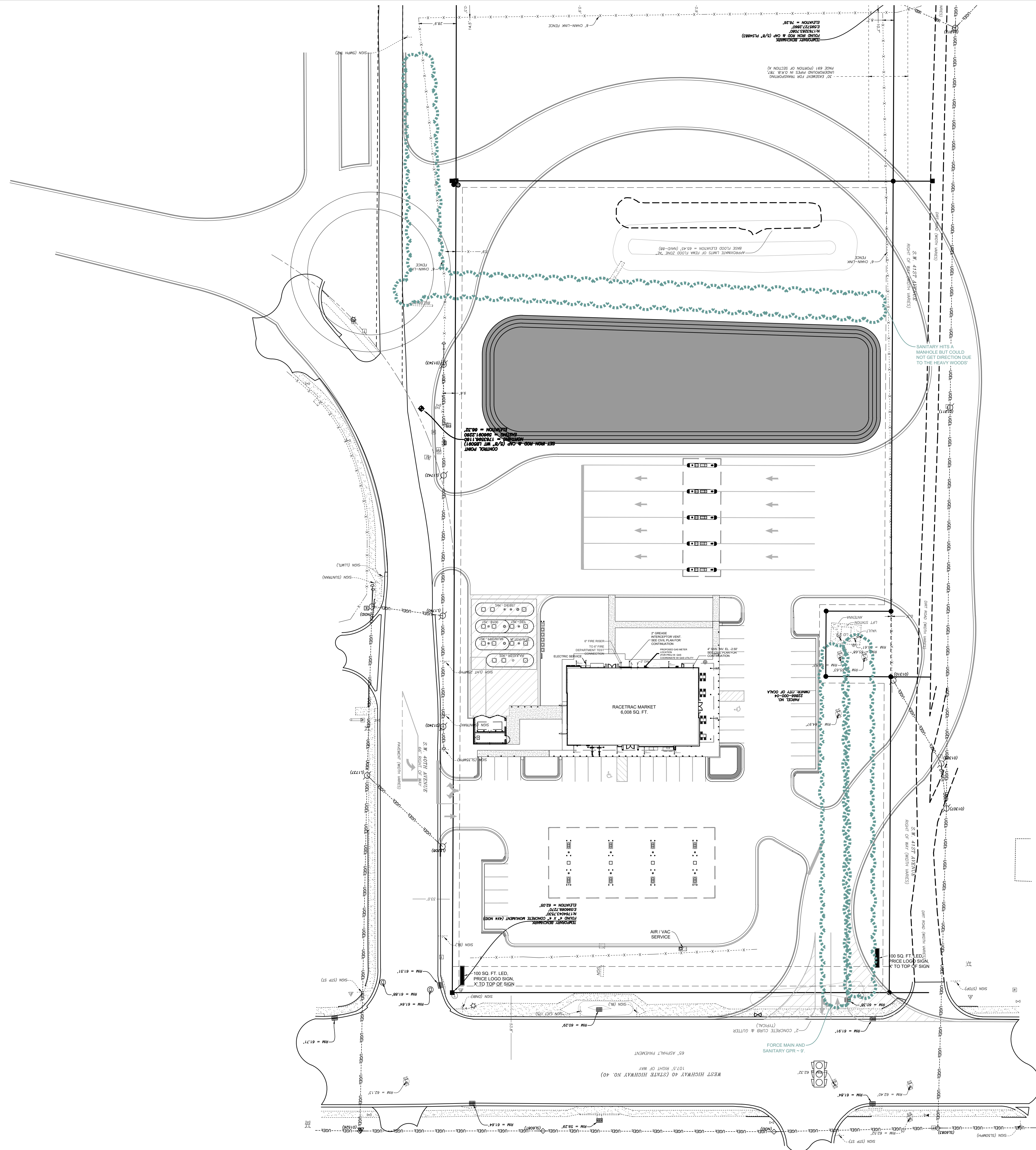
DRAWN-BY	DESIMPSON
DATE	6/7/2024
SCALE	

DRAWING NAME:
 1704 - RTFC(EO) Ocala West V2.dwg

SHEET NO.	VERSION



Know what's below.
Call before you dig.



THESE PLANS ARE SUBJECT TO FEDERAL COPYRIGHT LAWS. ANY USE OF SAME WITHOUT THE EXPRESSED WRITTEN PERMISSION OF RACETRAC PETROLEUM, INC. IS PROHIBITED.		NO.		DATE	
		RACETRAC PETROLEUM, INC. 1704 - RTE F(ED) OCALA WEST SUITE 300 ATLANTA, GA 30389 (770) 431-7600			
EXISTING UTILITY PLAN		OCALA WEST			
		4040 SILVER SPRINGS BLVD OCALA, FL MARION COUNTY			
DRAWN-BY	DESIMPSON				
DATE	6/7/2024				
SCALE	1" = 40'				
DRAWING NAME:		1704 - RTE F(ED) OCALA WEST V2.dwg			
SHEET NO.	VERSION				

CONTACT RACETRAC PETROLEUM, INC. PROJECT MANAGER PRIOR TO ANY REVISIONS TO THE PLAN SUPPLIED BY RACETRAC PETROLEUM, INC.