

CURVE 2
 P.I. STA 2468+73.62
 M = 1781483.0135
 E = 045°55'18.536
 Δ = 31°06'12" RT
 R = 3274.17'
 T = 0111.18'
 L = 1777.39'
 P.C. STA 2459+62.44
 P.T. STA 2477+39.83

EQUATION STATION
 B SURVEY S.R. 93
 P.O.T. STA 2482+20.45 =
 B SURVEY 49TH ST
 EXTENSION
 SET 5/8" I.R.C. *1901 LB 2648"

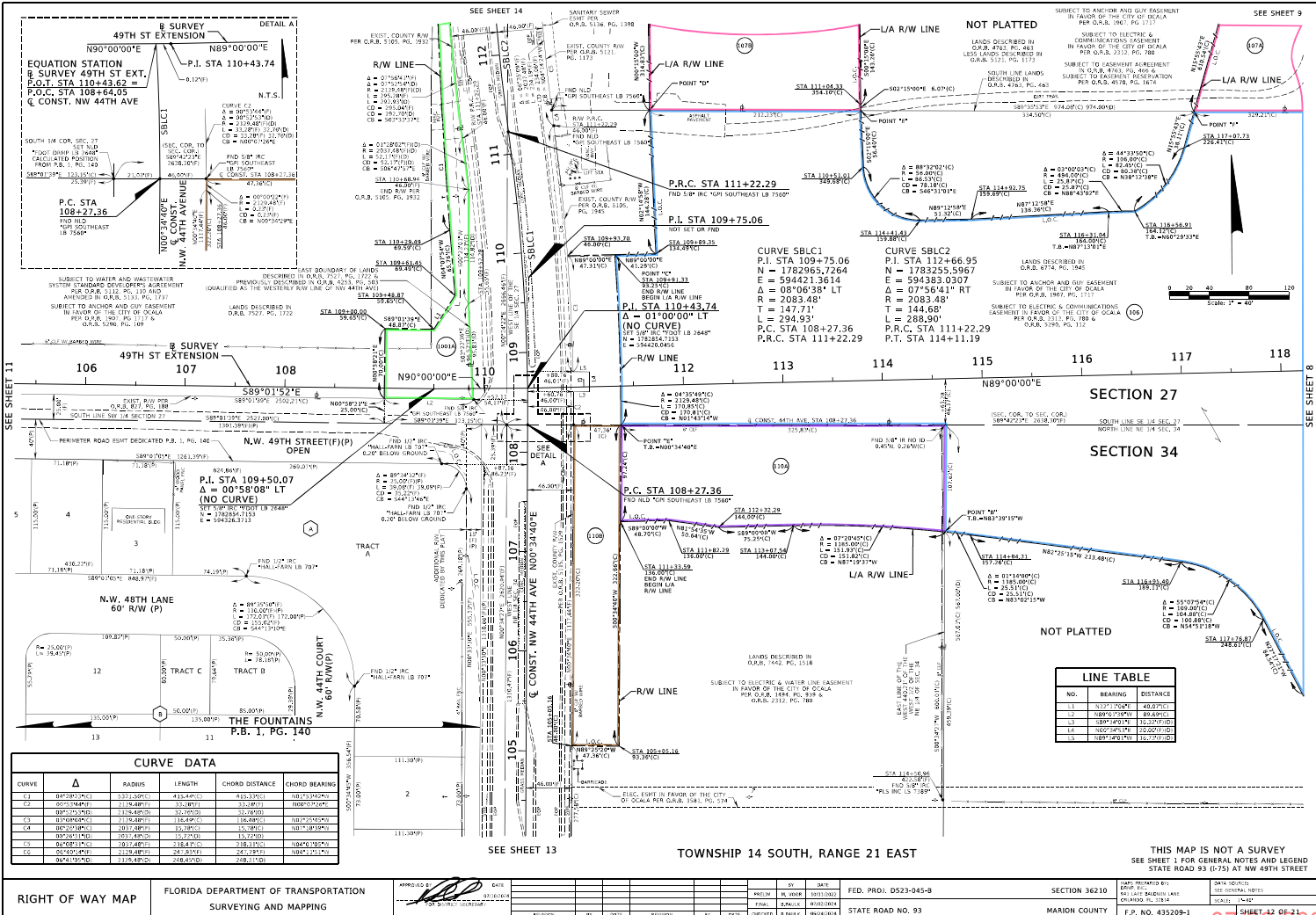
TOWNSHIP 14 SOUTH, RANGE 21 EAST

SEE SHEET 3 & 15

THIS MAP IS NOT A SURVEY
 SEE SHEET 1 FOR GENERAL NOTES AND LEGEND
 STATE ROAD 93 (I-75) AT NW 49TH STREET

RIGHT OF WAY MAP	FLORIDA DEPARTMENT OF TRANSPORTATION SURVEYING AND MAPPING	APPROVED BY	DATE	BY	DATE	FED. PROJ. D523-045-9	SECTION 36210	DATE PLOTTED
		DESIGNED BY	DATE	DESIGNED BY	DATE	STATE ROAD NO. 93	MARION COUNTY	T.P. NO. 432209-1

07/22/2024



CURVE DATA

CURVE	Δ	RADIUS	LENGTH	CHORD DISTANCE	CHORD BEARING
C1	88°30'00" E	333.5000'	415.4400'	415.3700'	102°17'00" E
C2	65°15'00" W	219.8800'	31.8800'	31.8700'	100°07'00" W
C3	09°15'00" E	225.4800'	31.0100'	31.0000'	102°00'00" E
C4	10°30'00" E	201.4800'	31.9800'	31.9800'	102°15'00" E
C5	09°15'00" E	201.4800'	31.9800'	31.9800'	102°00'00" E
C6	60°45'00" E	301.4800'	218.4700'	218.3700'	102°40'00" E
C7	09°15'00" E	225.4800'	31.0100'	31.0000'	102°00'00" E
C8	06°45'00" E	312.4800'	248.4500'	248.3700'	102°00'00" E

LINE TABLE

NO.	BEARING	DISTANCE
1	N 07°17'00" E	480.00' (PI)
2	N 07°17'00" E	480.00' (PI)
3	S 89°50'00" W	16.00' (PI)
4	N 07°17'00" E	480.00' (PI)
5	N 07°17'00" E	480.00' (PI)
6	N 07°17'00" E	480.00' (PI)
7	N 07°17'00" E	480.00' (PI)
8	N 07°17'00" E	480.00' (PI)
9	N 07°17'00" E	480.00' (PI)
10	N 07°17'00" E	480.00' (PI)
11	N 07°17'00" E	480.00' (PI)
12	N 07°17'00" E	480.00' (PI)
13	N 07°17'00" E	480.00' (PI)
14	N 07°17'00" E	480.00' (PI)
15	N 07°17'00" E	480.00' (PI)
16	N 07°17'00" E	480.00' (PI)
17	N 07°17'00" E	480.00' (PI)
18	N 07°17'00" E	480.00' (PI)
19	N 07°17'00" E	480.00' (PI)
20	N 07°17'00" E	480.00' (PI)
21	N 07°17'00" E	480.00' (PI)
22	N 07°17'00" E	480.00' (PI)
23	N 07°17'00" E	480.00' (PI)
24	N 07°17'00" E	480.00' (PI)
25	N 07°17'00" E	480.00' (PI)
26	N 07°17'00" E	480.00' (PI)
27	N 07°17'00" E	480.00' (PI)
28	N 07°17'00" E	480.00' (PI)
29	N 07°17'00" E	480.00' (PI)
30	N 07°17'00" E	480.00' (PI)
31	N 07°17'00" E	480.00' (PI)
32	N 07°17'00" E	480.00' (PI)
33	N 07°17'00" E	480.00' (PI)
34	N 07°17'00" E	480.00' (PI)
35	N 07°17'00" E	480.00' (PI)
36	N 07°17'00" E	480.00' (PI)
37	N 07°17'00" E	480.00' (PI)
38	N 07°17'00" E	480.00' (PI)
39	N 07°17'00" E	480.00' (PI)
40	N 07°17'00" E	480.00' (PI)
41	N 07°17'00" E	480.00' (PI)
42	N 07°17'00" E	480.00' (PI)
43	N 07°17'00" E	480.00' (PI)
44	N 07°17'00" E	480.00' (PI)
45	N 07°17'00" E	480.00' (PI)
46	N 07°17'00" E	480.00' (PI)
47	N 07°17'00" E	480.00' (PI)
48	N 07°17'00" E	480.00' (PI)
49	N 07°17'00" E	480.00' (PI)
50	N 07°17'00" E	480.00' (PI)
51	N 07°17'00" E	480.00' (PI)
52	N 07°17'00" E	480.00' (PI)
53	N 07°17'00" E	480.00' (PI)
54	N 07°17'00" E	480.00' (PI)
55	N 07°17'00" E	480.00' (PI)
56	N 07°17'00" E	480.00' (PI)
57	N 07°17'00" E	480.00' (PI)
58	N 07°17'00" E	480.00' (PI)
59	N 07°17'00" E	480.00' (PI)
60	N 07°17'00" E	480.00' (PI)
61	N 07°17'00" E	480.00' (PI)
62	N 07°17'00" E	480.00' (PI)
63	N 07°17'00" E	480.00' (PI)
64	N 07°17'00" E	480.00' (PI)
65	N 07°17'00" E	480.00' (PI)
66	N 07°17'00" E	480.00' (PI)
67	N 07°17'00" E	480.00' (PI)
68	N 07°17'00" E	480.00' (PI)
69	N 07°17'00" E	480.00' (PI)
70	N 07°17'00" E	480.00' (PI)
71	N 07°17'00" E	480.00' (PI)
72	N 07°17'00" E	480.00' (PI)
73	N 07°17'00" E	480.00' (PI)
74	N 07°17'00" E	480.00' (PI)
75	N 07°17'00" E	480.00' (PI)
76	N 07°17'00" E	480.00' (PI)
77	N 07°17'00" E	480.00' (PI)
78	N 07°17'00" E	480.00' (PI)
79	N 07°17'00" E	480.00' (PI)
80	N 07°17'00" E	480.00' (PI)
81	N 07°17'00" E	480.00' (PI)
82	N 07°17'00" E	480.00' (PI)
83	N 07°17'00" E	480.00' (PI)
84	N 07°17'00" E	480.00' (PI)
85	N 07°17'00" E	480.00' (PI)
86	N 07°17'00" E	480.00' (PI)
87	N 07°17'00" E	480.00' (PI)
88	N 07°17'00" E	480.00' (PI)
89	N 07°17'00" E	480.00' (PI)
90	N 07°17'00" E	480.00' (PI)
91	N 07°17'00" E	480.00' (PI)
92	N 07°17'00" E	480.00' (PI)
93	N 07°17'00" E	480.00' (PI)
94	N 07°17'00" E	480.00' (PI)
95	N 07°17'00" E	480.00' (PI)
96	N 07°17'00" E	480.00' (PI)
97	N 07°17'00" E	480.00' (PI)
98	N 07°17'00" E	480.00' (PI)
99	N 07°17'00" E	480.00' (PI)
100	N 07°17'00" E	480.00' (PI)

01/22/2024