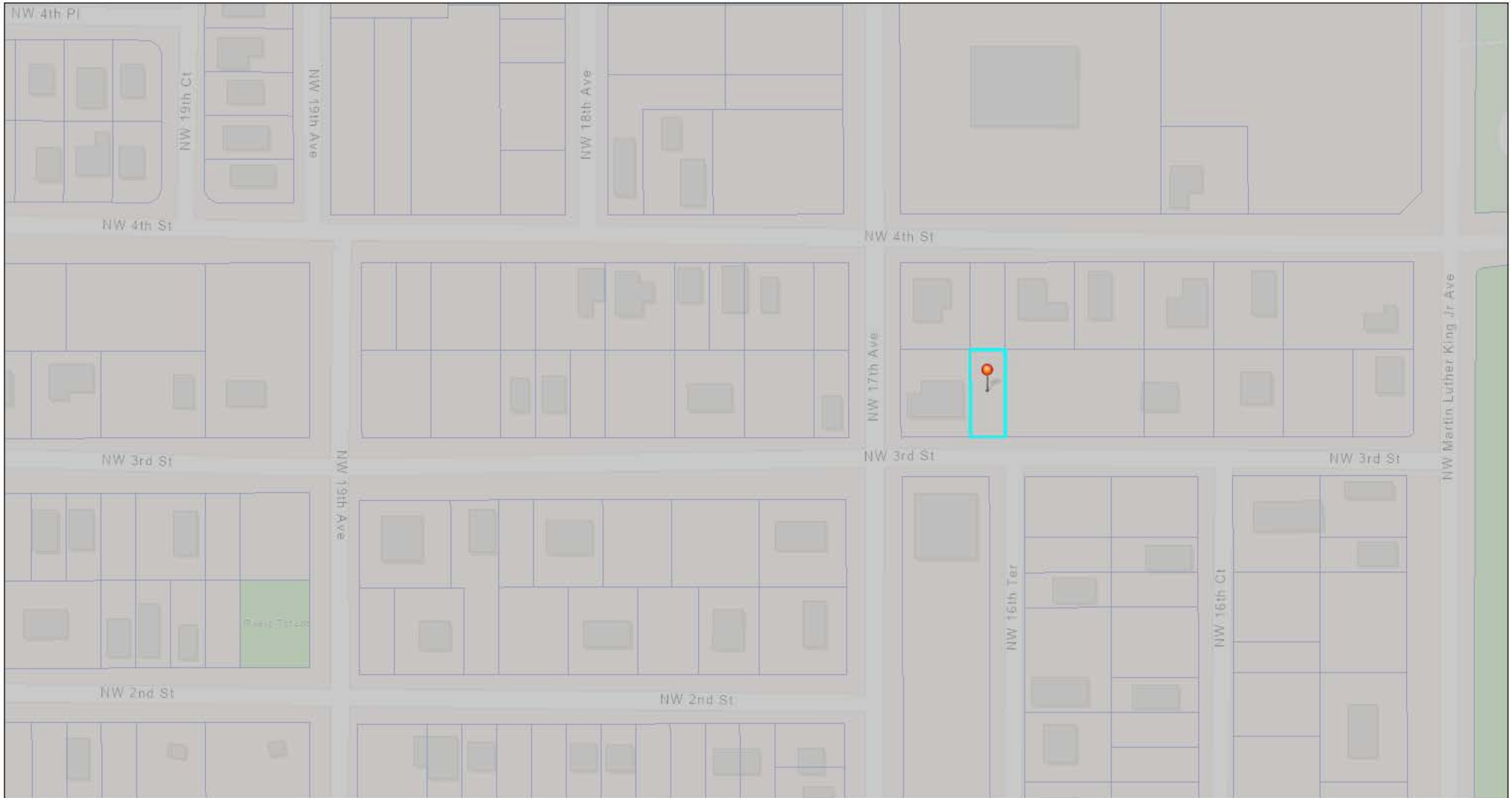


1641 NW 4th Street

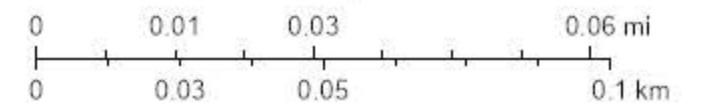


10/8/2024, 3:13:45 PM

 City Limits

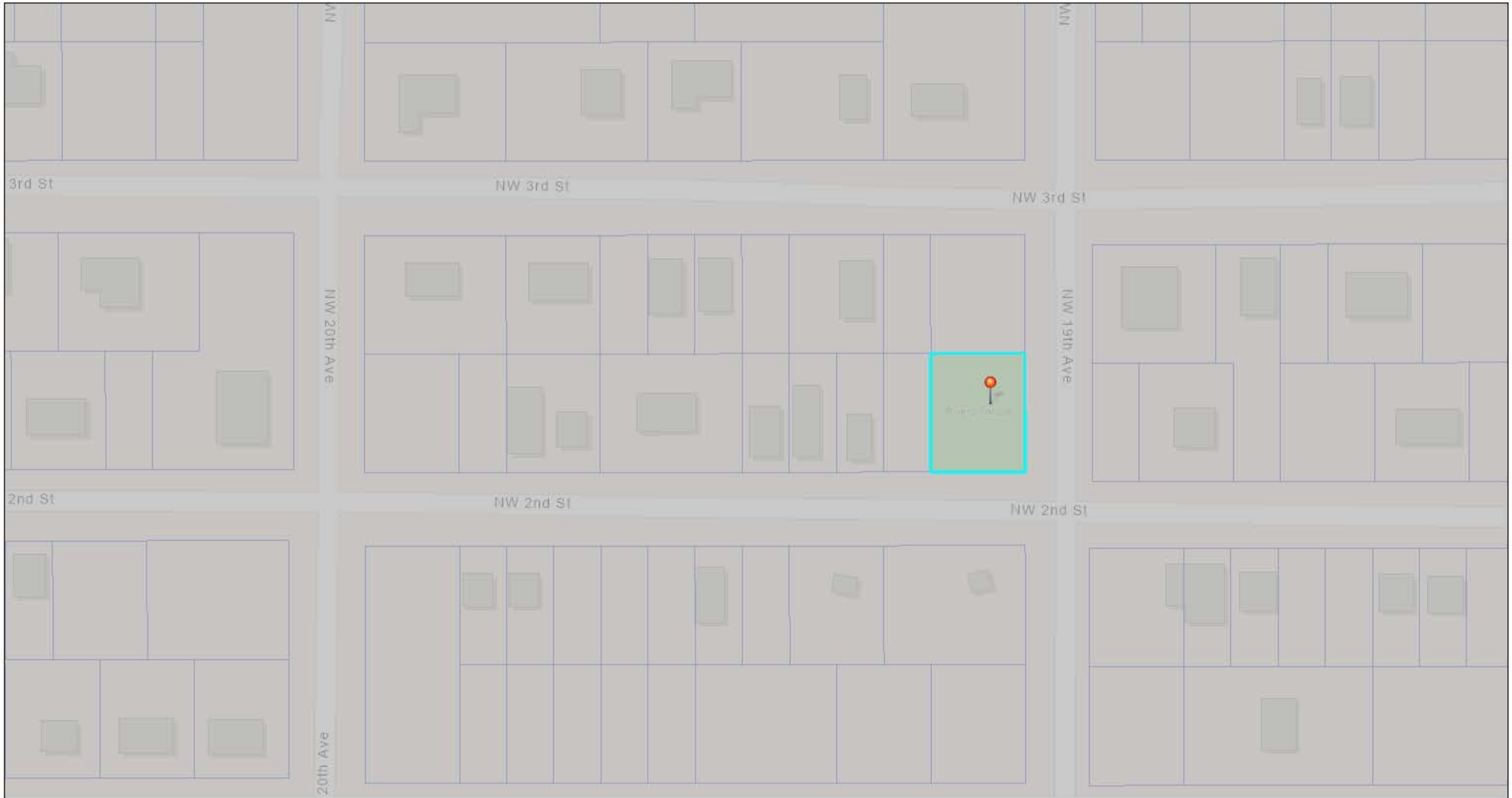
 Parcels

1:1,508




Esri Community Maps Contributors, Marion County Property Appraiser, FDEP, © OpenStreetMap, Microsoft, Esri, TomTom, Garmin, SafeGraph, GeoTechnologies, Inc, METI/NASA, USGS, EPA, NPS, US Census Bureau, USDA, USFWS

2260 NW 19th Avenue

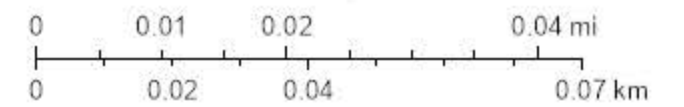


10/8/2024, 3:09:01 PM

 City Limits

 Parcels

1:1,112



Esri Community Maps Contributors, Marion County Property Appraiser, FDEP, © OpenStreetMap, Microsoft, Esri, TomTom, Garmin, SafeGraph, GeoTechnologies, Inc, METI/NASA, USGS, EPA, NPS, US Census Bureau, USDA, USFWS

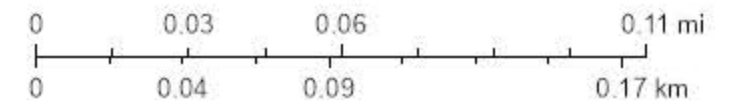
Parcel 2260-194-007



10/8/2024, 3:25:46 PM

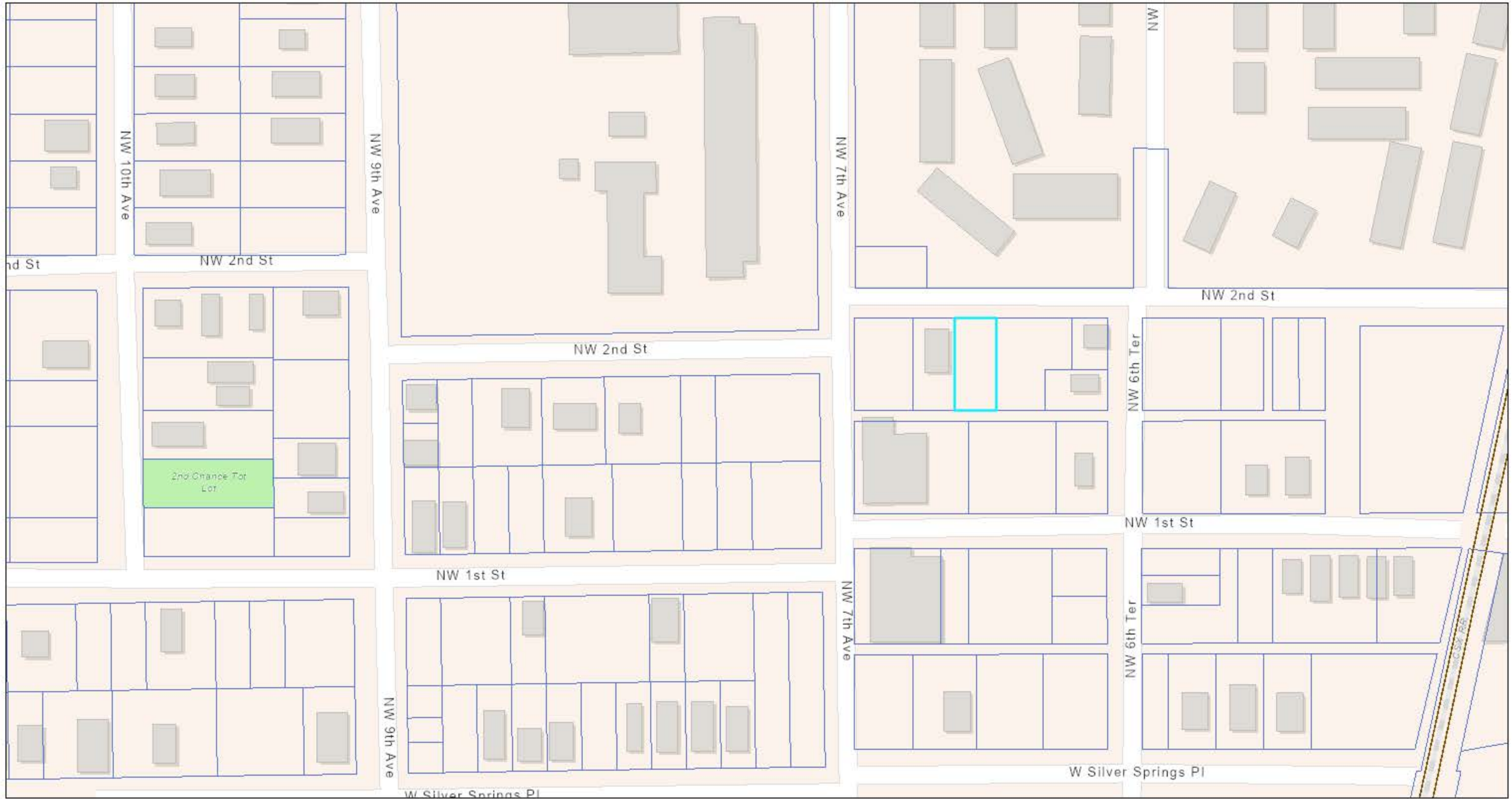
 Parcels

1:2,514



Esri Community Maps Contributors, Marion County Property Appraiser, FDEP, © OpenStreetMap, Microsoft, Esri, TomTom, Garmin, SafeGraph, GeoTechnologies, Inc, METI/NASA, USGS, EPA, NPS, US Census Bureau, USDA, USFWS

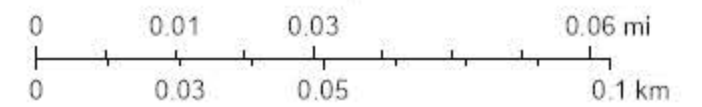
Parcel 2856-006-13



10/8/2024, 3:28:49 PM

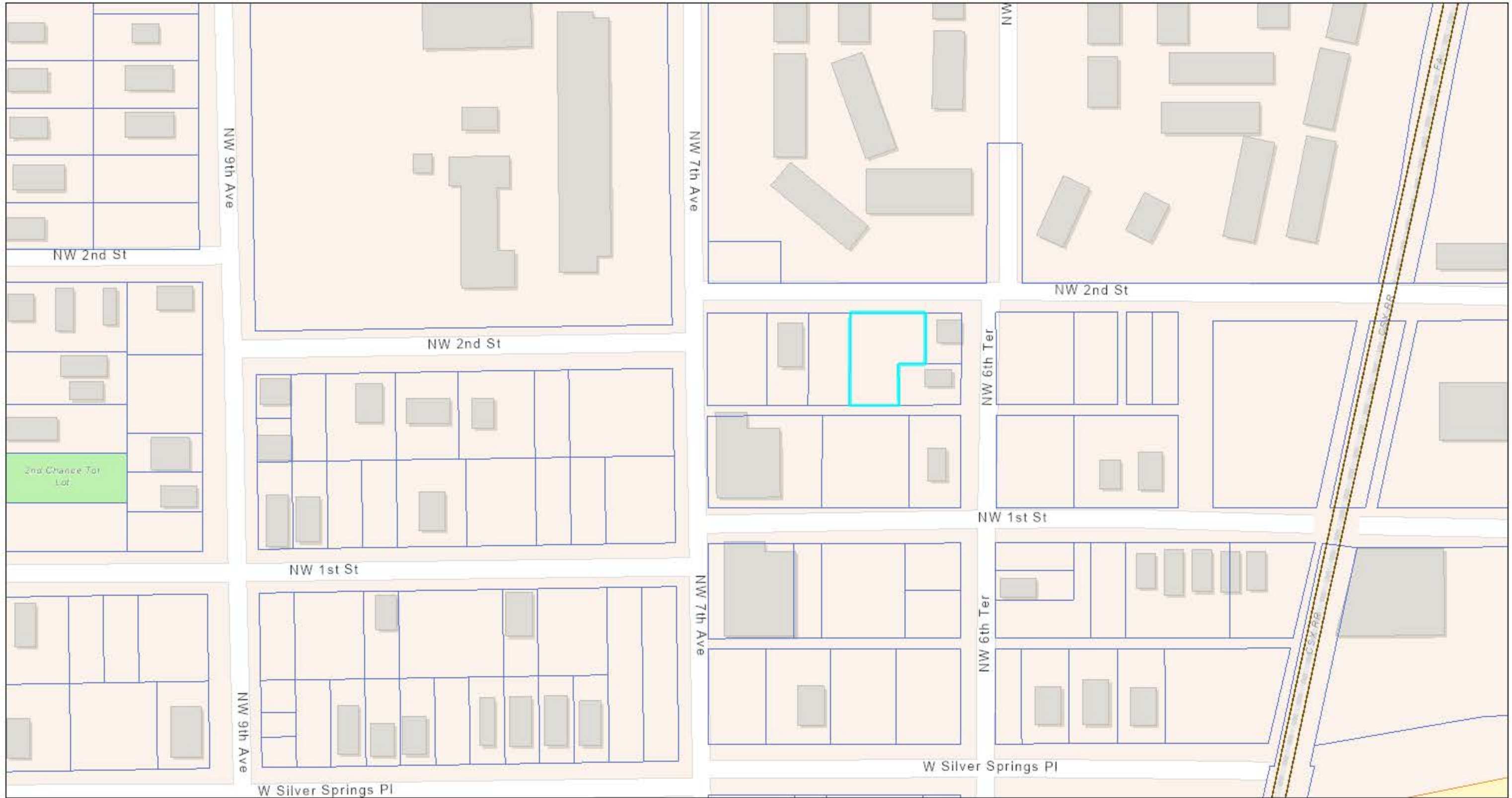
-  Railroads
-  Parcels

1:1,508



Esri Community Maps Contributors, Marion County Property Appraiser, FDEP, © OpenStreetMap, Microsoft, Esri, TomTom, Garmin, SafeGraph, GeoTechnologies, Inc, METI/NASA, USGS, EPA, NPS, US Census Bureau, USDA, USFWS

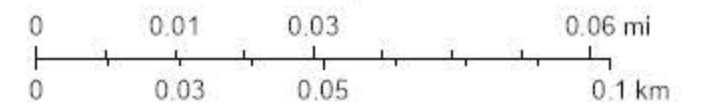
Parcel 2856-006-015



10/8/2024, 3:36:52 PM

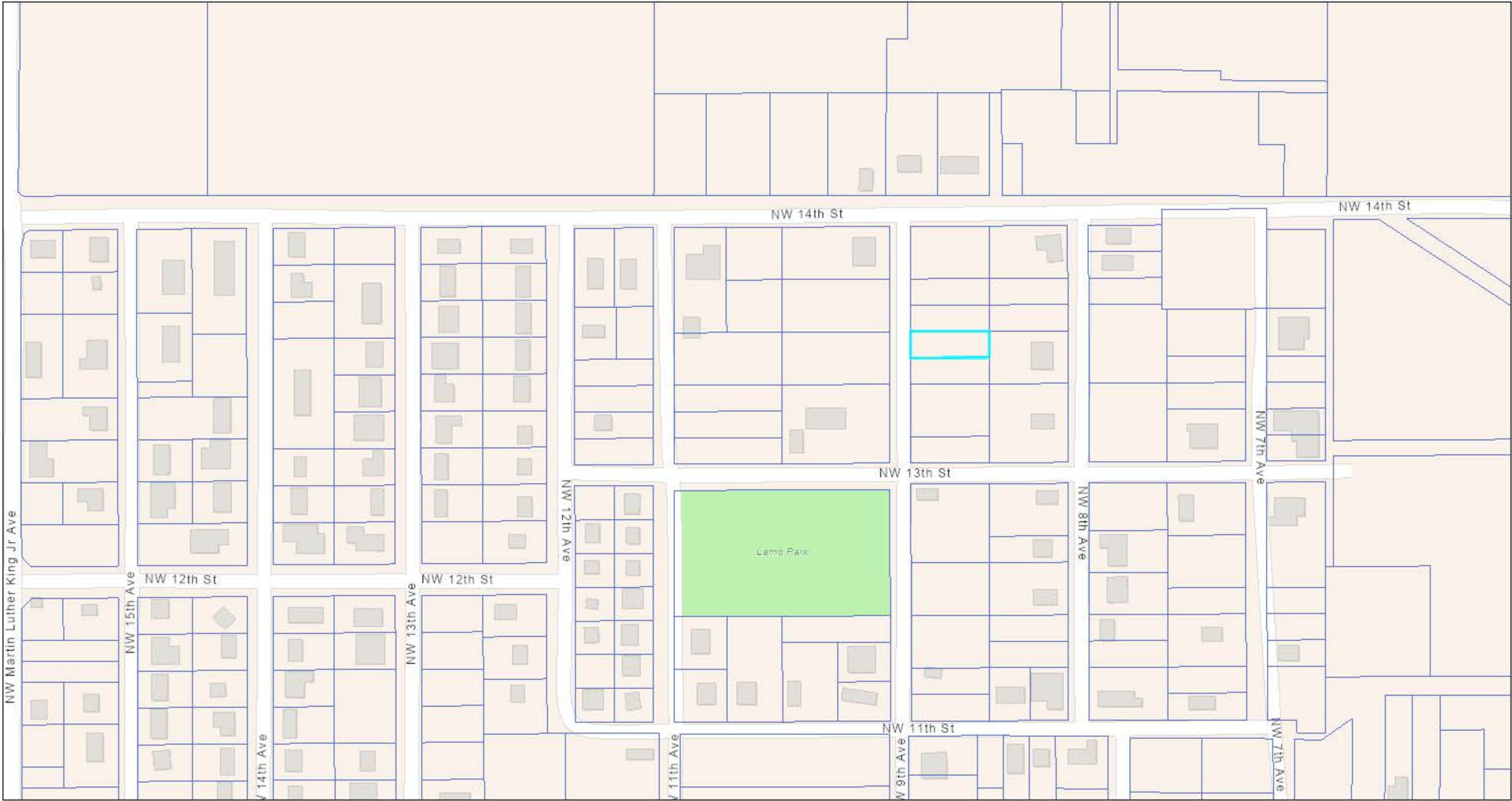
-  Railroads
-  Parcels

1:1,508



Esri Community Maps Contributors, Marion County Property Appraiser, FDEP, © OpenStreetMap, Microsoft, Esri, TomTom, Garmin, SafeGraph, GeoTechnologies, Inc, METI/NASA, USGS, EPA, NPS, US Census Bureau, USDA, USFWS

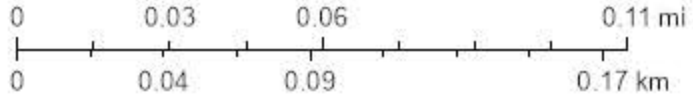
1325 NW 9TH Avenue



10/8/2024, 3:32:36 PM

Parcels

1:2,514



Esri Community Maps Contributors, Marion County Property Appraiser, FDEP, © OpenStreetMap, Microsoft, Esri, TomTom, Garmin, SafeGraph, GeoTechnologies, Inc, METI/NASA, USGS, EPA, NPS, US Census Bureau, USDA, USFWS