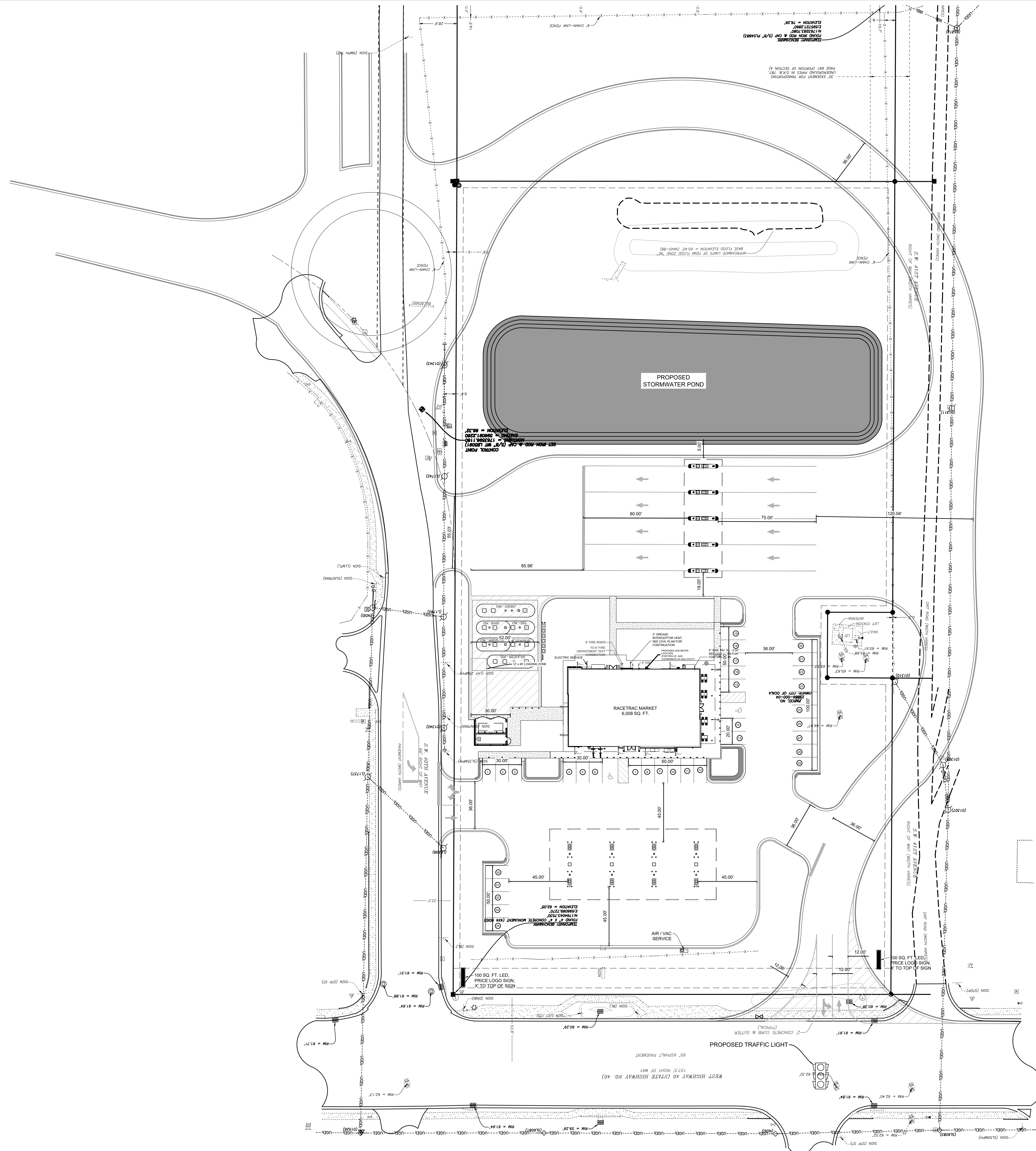




Know what's below.  
Call before you dig.



- SITE DESIGN NOTES:**
- 1 MINIMUM STALL DIMENSION 9.5' X 10'
  - 2 25' TANK SETBACK ADJACENT TO RESIDENTIAL
  - 3 MAX NUMBER OF STALLS IN A ROW 10
  - 4 MINIMUM LOADING ZONE DIMENSION 12' X 45'
  - 5 INTERIOR LANDSCAPE ISLANDS 360 SQFT MINIMUM
  - 6 BICYCLE PARKING 5% OF TOTAL PARKING NUMBER
  - 7 1 SQFT OF LANDSCAPING FOR EACH 50 SQFT OF PAVEMENT
  - 8 20% OPEN SPACE
  - 9 MAX SIGN SF 100 OR 2 SQFT FOR EACH PROPERTY FRONT FOOT, WHICHEVER IS GREATER
  - 10 2 SIGNS ARE ALLOWED
  - 11 12' DRIVEWAY SETBACK FROM ADJACENT PROPERTY
  - 12 A LEFT TURN LANE WILL BE REQUIRED NORTH BOUND FROM 40TH AVE TO W. SILVER SPRINGS BLVD.
  - 13 REMOVE EXISTING LEFT MOVEMENT FROM THE 40TH AVE
  - 14 A TRAFFIC LIGHT IS PROPOSED AT 40 AVE AND W. SILVER SPRINGS BLVD.

**SITE DESIGN STANDARDS**

| BLDG STBK | REQUIRED | DEVIATION |
|-----------|----------|-----------|
| FRONT     | 20       | -         |
| REAR      | 0        | -         |
| SIDE      | 0        | -         |
| SIDE      | 0        | -         |

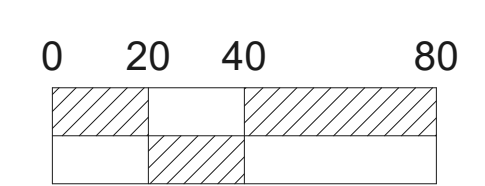
| LNDS STBK          | REQUIRED | DEVIATION |
|--------------------|----------|-----------|
| FRONT              | 5        | -         |
| REAR               | 5        | -         |
| SIDE (RESIDENTIAL) | 25       | -         |
| SIDE               | 5        | -         |

| SIGN STBK | REQUIRED | DEVIATION |
|-----------|----------|-----------|
| FRONT     | 5        | -         |
| SIDE      | 5        | -         |

**ON-SITE USE SUMMARY**

| ITEM         | QUANTITY | UNITS           |
|--------------|----------|-----------------|
| 6" CONCRETE  | 40382    | FT <sup>2</sup> |
| 8" CONCRETE  | 44224    | FT <sup>2</sup> |
| ACCESS ROADS | 79174    | FT <sup>2</sup> |
| CURB         | 4055     | LF              |



CONTACT RACETRAC PETROLEUM, INC. PROJECT MANAGER PRIOR TO ANY REVISIONS TO THE PLAN SUPPLIED BY RACETRAC PETROLEUM, INC.

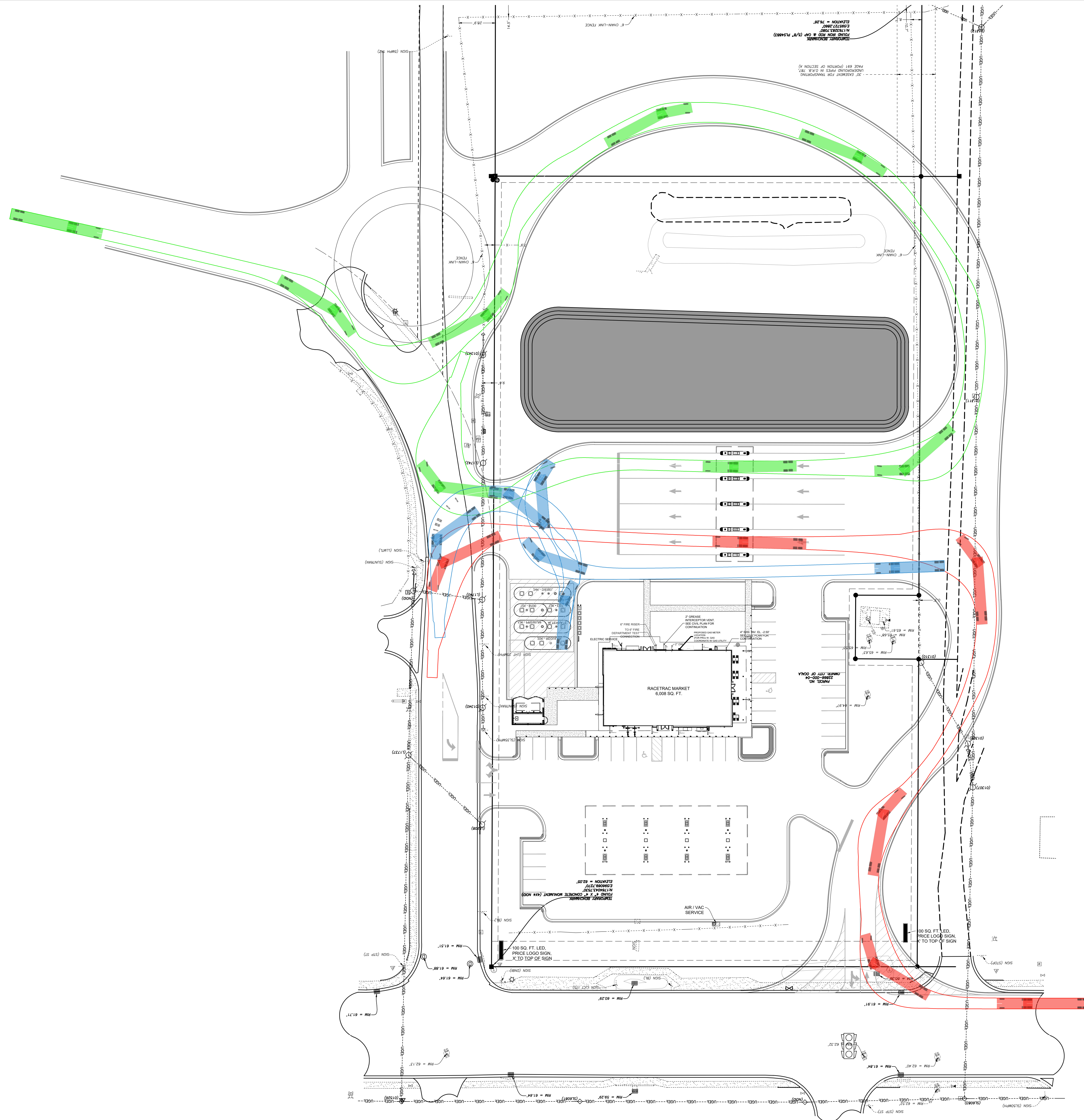
| SITE PLAN                |           | DATE          |                                    |
|--------------------------|-----------|---------------|------------------------------------|
| OCALA WEST               |           |               |                                    |
| 4040 SILVER SPRINGS BLVD |           |               |                                    |
| OCALA, FL                |           |               |                                    |
| MARION COUNTY            |           |               |                                    |
| DRAWN-BY                 | DESIMPSON | DATE          | 6/7/2024                           |
| SCALE                    | 1" = 40'  | DRAWING NAME: | 1704 - RTEFC(ED) Ocala West V2.dwg |
| SHEET NO.                | VERSION   | NO.           | DATE                               |

THESE PLANS ARE SUBJECT TO FEDERAL COPYRIGHT LAWS. ANY USE OF SAME WITHOUT THE EXPRESSED WRITTEN PERMISSION OF RACETRAC PETROLEUM, INC. IS PROHIBITED.

RACETRAC PETROLEUM, INC.  
1704 - RTEFC(ED) Ocala West  
SUITE 300 ATLANTA, GA 30389  
(770) 431-7600



Know what's below.  
Call before you dig.



- SITE DESIGN NOTES:**
- 1 MINIMUM STALL DIMENSION 9.5' X 10'
  - 2 25' TANK SETBACK ADJACENT TO RESIDENTIAL
  - 3 MAX NUMBER OF STALLS IN A ROW 10
  - 4 MINIMUM LOADING ZONE DIMENSION 12' X 45'
  - 5 INTERIOR LANDSCAPE ISLANDS 360 SQFT MINIMUM
  - 6 BICYCLE PARKING 5% OF TOTAL PARKING NUMBER
  - 7 1 SQFT OF LANDSCAPING FOR EACH 50 SQFT OF PAVEMENT
  - 8 20% OPEN SPACE
  - 9 MAX SIGN SF 100 OR 2 SQFT FOR EACH PROPERTY FRONT FOOT, WHICHEVER IS GREATER
  - 10 2 SIGNS ARE ALLOWED
  - 11 12' DRIVEWAY SETBACK FROM ADJACENT PROPERTY
  - 12 A LEFT TURN LANE WILL BE REQUIRED NORTH BOUND FROM 40TH AVE TO W. SILVER SPRINGS BLVD.
  - 13 REMOVE EXISTING LEFT MOVEMENT FROM THE 40TH AVE
  - 14 A TRAFFIC LIGHT IS PROPOSED AT 40 AVE AND W. SILVER SPRINGS BLVD.

**SITE DESIGN STANDARDS**

| BLDG STBK | REQUIRED | DEVIATION |
|-----------|----------|-----------|
| FRONT     | 20       | -         |
| REAR      | 0        | -         |
| SIDE      | 0        | -         |
| SIDE      | 0        | -         |

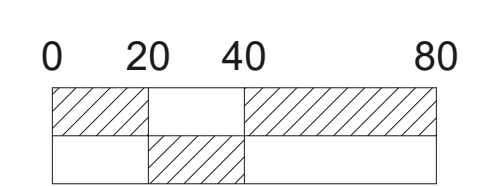
| LNDS STBK          | REQUIRED | DEVIATION |
|--------------------|----------|-----------|
| FRONT              | 5        | -         |
| REAR               | 5        | -         |
| SIDE (RESIDENTIAL) | 25       | -         |
| SIDE               | 5        | -         |


| SIGN STBK | REQUIRED | DEVIATION |
|-----------|----------|-----------|
| FRONT     | 5        | -         |
| SIDE      | 5        | -         |

**ON-SITE USE SUMMARY**

| ITEM        | QUANTITY | UNITS           |
|-------------|----------|-----------------|
| 6" CONCRETE |          | FT <sup>2</sup> |
| 8" CONCRETE |          | FT <sup>2</sup> |
| CURB        |          | LF              |



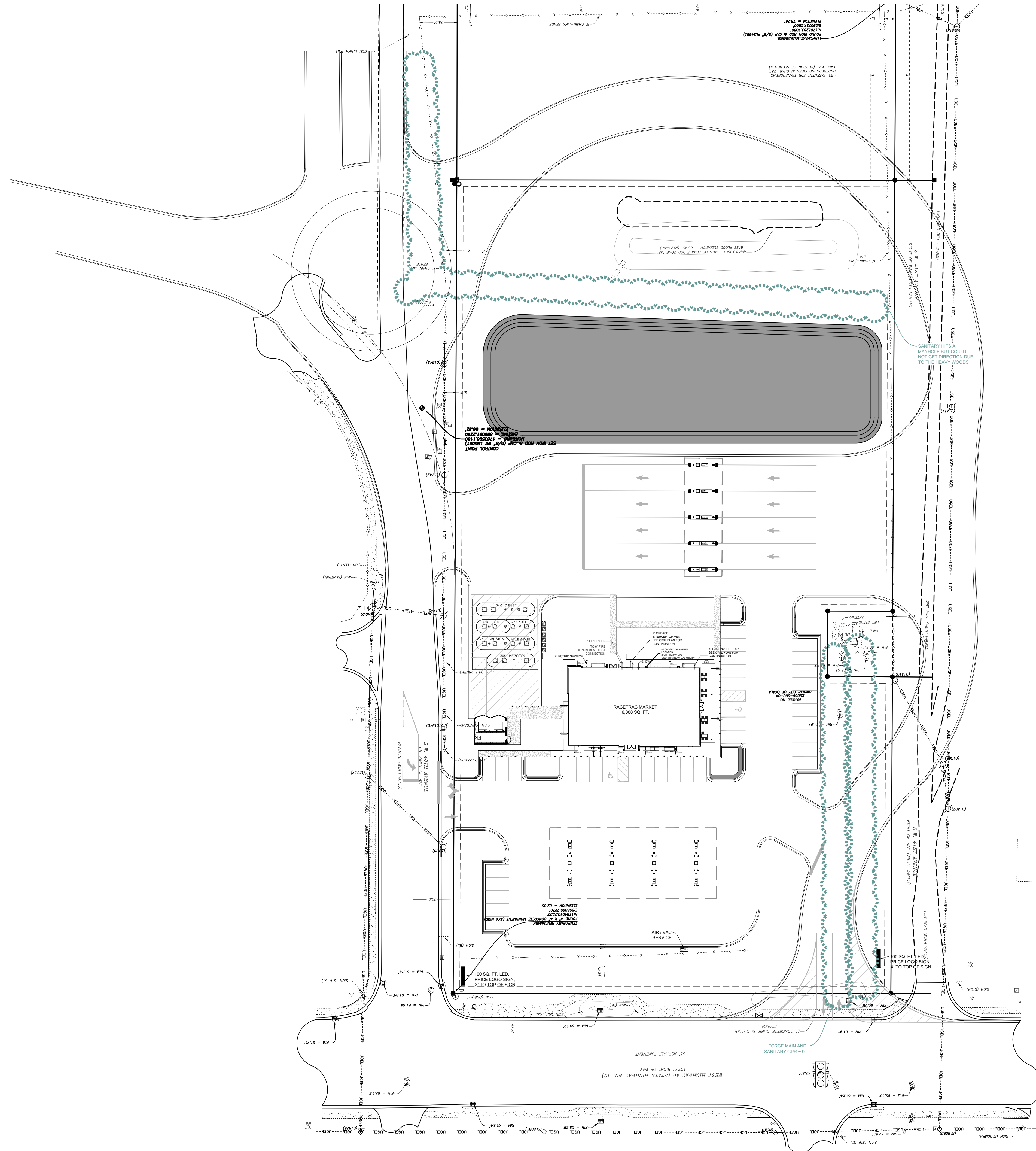
CONTACT RACETRAC PETROLEUM, INC. PROJECT MANAGER PRIOR TO ANY REVISIONS TO THE PLAN SUPPLIED BY RACETRAC PETROLEUM, INC.

|  |                                     |     |      |
|--|-------------------------------------|-----|------|
| THESE PLANS ARE SUBJECT TO FEDERAL COPYRIGHT LAWS. ANY USE OF SAME WITHOUT THE EXPRESSED WRITTEN PERMISSION OF RACETRAC PETROLEUM, INC. IS PROHIBITED.   |                                     | NO. | DATE |
| <br>RACETRAC PETROLEUM, INC.<br>1704 - RTE FC(ED) Ocala West<br>SUITE 300 ATLANTA, GA 30389<br>(770) 431-7600 |                                     |     |      |
| <b>SITE PLAN</b><br>OCALA WEST<br>4040 SILVER SPRINGS BLVD<br>OCALA, FL<br>MARION COUNTY   |                                     |     |      |
| DRAWN-BY   | DESIMPSON                           |     |      |
| DATE   | 6/7/2024                            |     |      |
| SCALE  | 1" = 40'                            |     |      |
| DRAWING NAME:  | 1704 - RTE FC(ED) Ocala West V2.dwg |     |      |
| SHEET NO.  | VERSION                             |     |      |

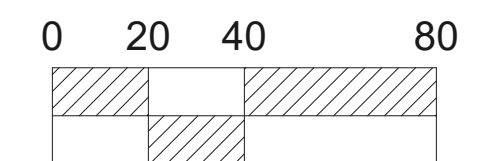




Know what's below.  
Call before you dig.



CONTACT RACETRAC PETROLEUM, INC. PROJECT MANAGER PRIOR TO ANY REVISIONS TO THE PLAN SUPPLIED BY RACETRAC PETROLEUM, INC.



THESE PLANS ARE SUBJECT TO FEDERAL COPYRIGHT LAWS. ANY USE OF SAME WITHOUT THE EXPRESSED WRITTEN PERMISSION OF RACETRAC PETROLEUM, INC. IS PROHIBITED.



RACETRAC PETROLEUM, INC.  
1704 - RTE F(ED) OCALA WEST  
SUITE 300 ATLANTA, GA 30389  
(770) 431-7600

EXISTING UTILITY PLAN

OCALA WEST

4040 SILVER SPRINGS BLVD  
OCALA, FL  
MARION COUNTY

DRAWN-BY DESIMPSON  
DATE 6/7/2024  
SCALE 1" = 40'  
DRAWING NAME:  
1704 - RTE F(ED) OCALA WEST V2.dwg

SHEET NO. VERSION

NO.

DATE