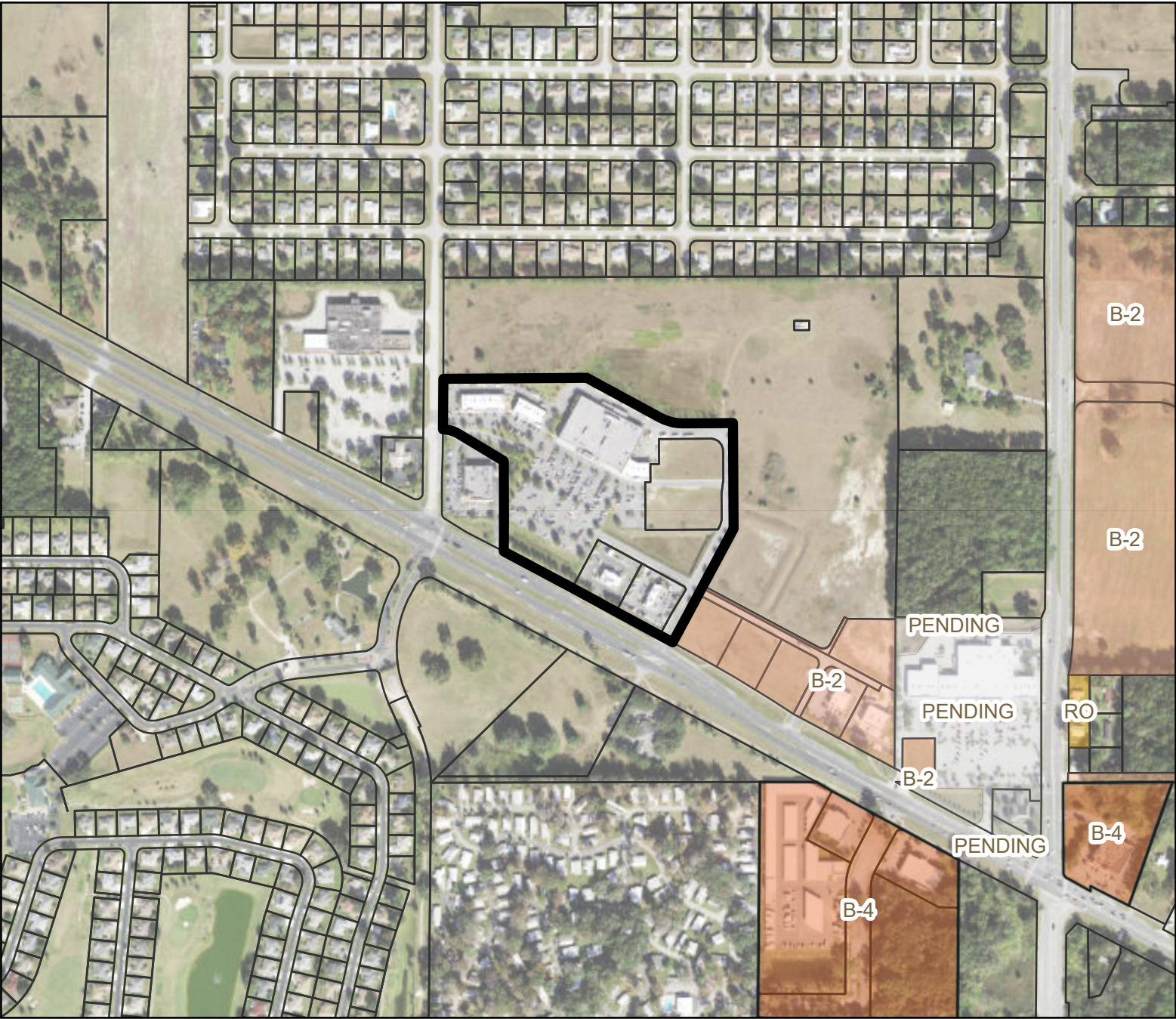
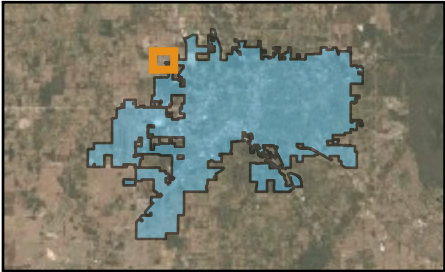


Aerial Map

Case Number: **ZON09-0009**
Parcel Number: 21509-002-01; 21509-002-03; 21509-002-04; 21509-003-00
Property Size: Approximately 17.94 acres
Land Use Designation: Commercial (County)
Zoning: B-2, Community Business (County)
Proposal: Rezone property to SC, Shopping Center (City)



- Legend**
- LUC09-0009 & ZON09-0009
 - B-2:Community Business
 - B-4:General Business
 - Ordinance Pending
 - PUD-M-03:Planned Unit Development-Mixed-3 Units
 - RO:Residential Office
 - Parcels

0 475 950 Feet