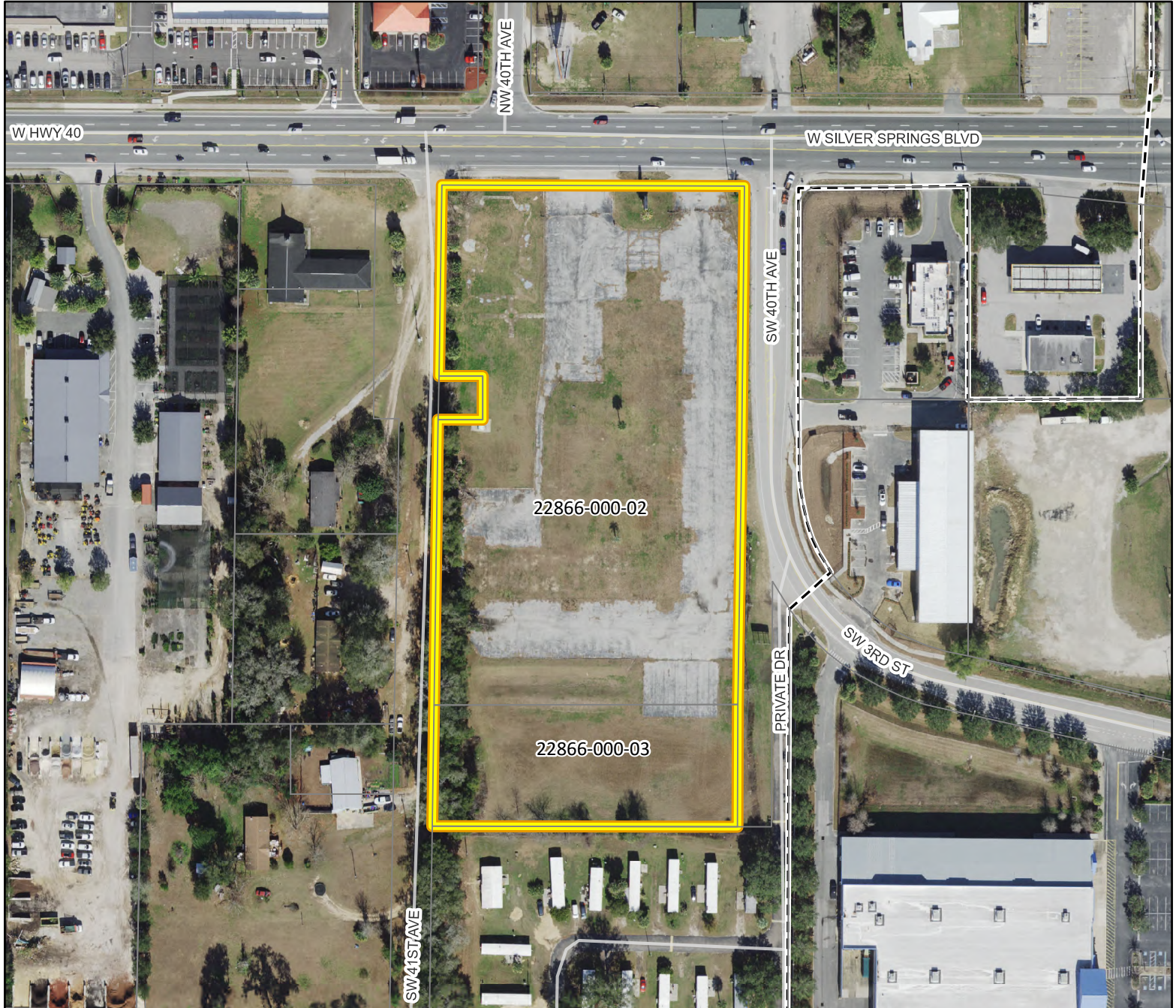
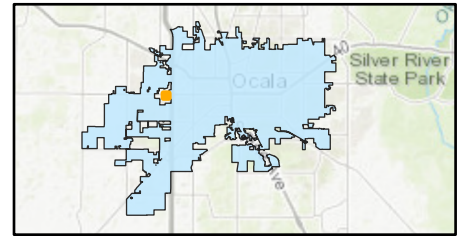


AERIAL MAP

P & Z Meeting: August 12, 2024

Case Number: LUC24-45691
Parcel Number: 22866-000-02 & 22866-000-03
Property Size: Approximately 5.86 acres
Land Use Designation: Commercial (County)
Zoning: B2, Community Business (County)
Proposal: A request to change future land use from Commercial (County) to Low Intensity (City).

Location Map



-  Subject Property
-  Parcels



Prepared by the City of Ocala
Growth Management Department
by kwirthlin on 7/17/2024