

Municipal Separate Storm Sewer Systems Presentation (MS4)

April 5, 2022

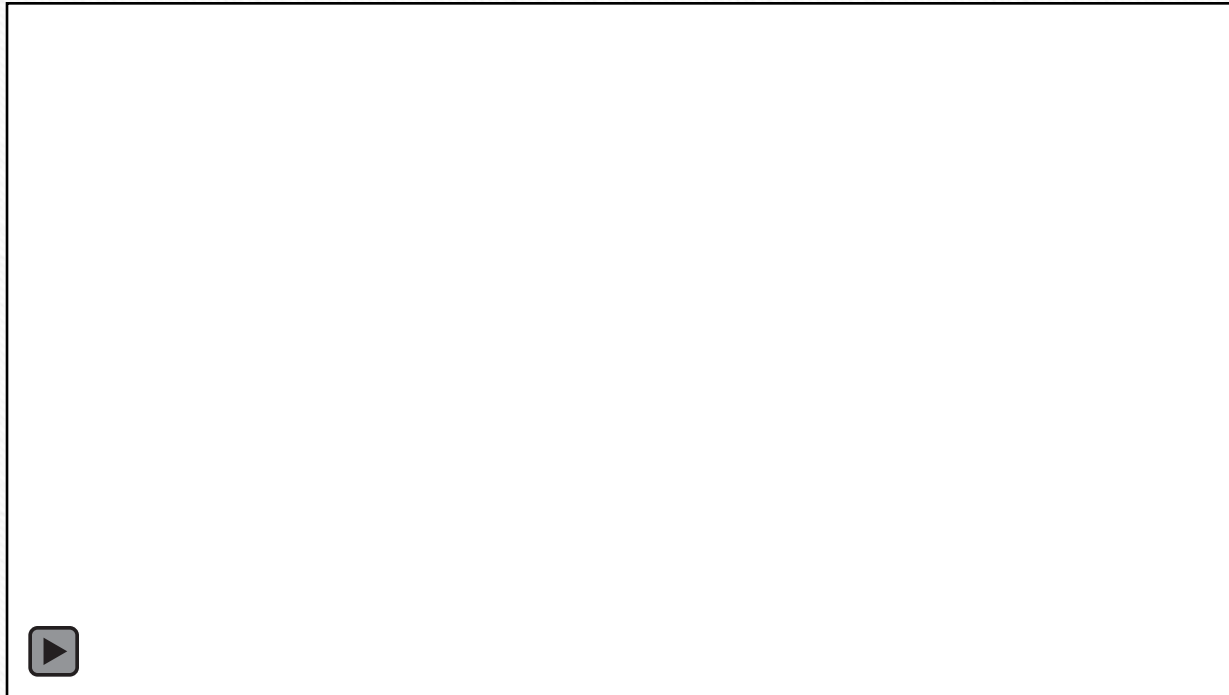
City Council Meeting

Municipal Separate Storm Sewer Systems (MS4)
is a conveyance or system of conveyances that is owned
by a state, city, town, or other public entity that
discharges to waters of the United States.

Florida
Department
of
Environmental
Protection
(FDEP)

- The City of Ocala is required to have an MS4 permit and must submit a report annually.
- The permit allows development and implementation of a comprehensive Storm Water Management Program (SWMP) that must include appropriate measures to control the quality of storm water discharged to the waters of the United States.
- The annual report may be audited at any time by FDEP.

Just one local inlet of the Stormwater system



FDEP
requires data
regarding the
following to
be listed on
the annual
report.

- **Sanitation**
- **Stormwater**
- **Fleet**
- **Water Resources**
- **Code Enforcement**

The public plays a role through the Public Works Citizen Reporting System

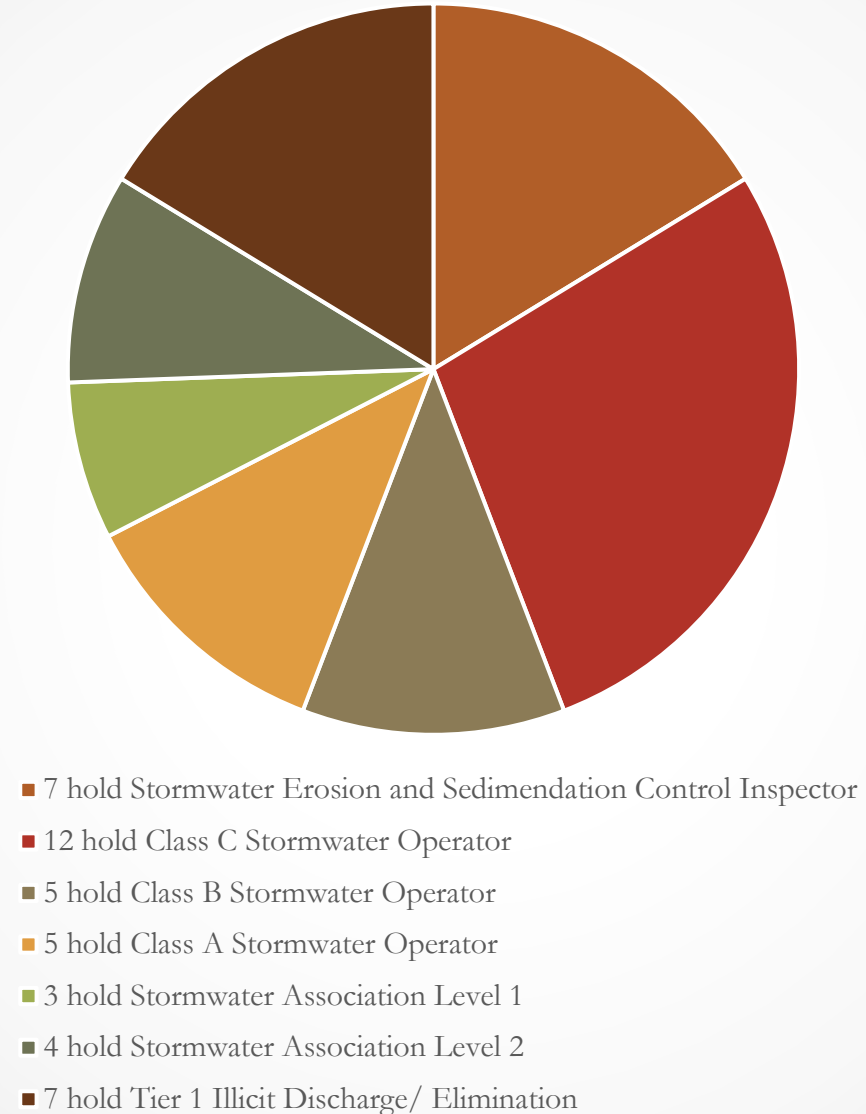
- In 2021, there were 47 Total reports via citizens
- 9 **Sanitation**- missed collection cans, dead animal, litter
- 3 **Stormwater**- manhole, mosquito, water in the roadway
- 18 **Streets**- pothole, debris in roadway, ROW obstruction, tree issues
- 2 **Electric Utilities**
- 1 **Water/ Sewer Utility**
- 1 **Code Enforcement**
- 7 **Private Subdivisions**
- 6 **Florida Department of Transportation**

Stormwater Operations

- **All** City and Privately owned/ maintained DRAs are inspected for sinkholes, illicit discharge, erosion, trash/debris and buildup of sedimentation and are inspected on a rotation schedule annually.
- Only 8 City and 30 Private DRAs flow into the Silver River. This area is known as Half Mile Creek.
- 42 DRAs went through a demucking process by City staff or contracted services dependent on staffing, length of project and cost since January 1, 2021.

Stormwater
Operations
Certifications
help give credit
towards permits
and ensure we
have qualified
staff to maintain
the stormwater
system.

Certifications held by 16 employees



Sanitation

- March 13: 3.64 TONS
- October 9: 2.32 TONS
- Total 6.96 TONS

TIRE WASTE AMNESTY DAY

Saturday, March 13 | 8 a.m.–1 p.m.

- **Hampton Aquatic Fun Center, 255 NW Martin Luther King Jr. Blvd.**
 - The **SW** corner of **NE Eighth Avenue** and **NE 14th Street**

10 tires per resident will be accepted for FREE.

This service is for residents living within the city limits.
A driver's license listing a city address may be required.

Tires generated by businesses will not be accepted.



Waste tires and a partial car



Sanitation

- April 24:
33,945 POUNDS
- September 12:
20,070 POUNDS
- Total **54,015 POUNDS**

Special Waste Collection Day

Household Hazardous and Electronic Waste

Saturday, September 12 | 9 a.m.–2 p.m.

At the SW corner of NE Eighth Avenue and NE 14th Street

Examples of hazardous waste items accepted:

- Lawn and garden chemicals
- Paint, strippers, thinners and gasoline
- Cleaning fluids
- Solvents
- Fluorescent bulbs
- Used oil and filters
- Auto batteries
- Pool chemicals

Examples of electronic items accepted:

- Battery chargers
- Computers, keyboards, mice and monitors
- Small size copiers, scanners and printers
- Fax machines
- CD, DVD, Blu-ray players and electronic games
- Stereos and televisions
- Cell phones



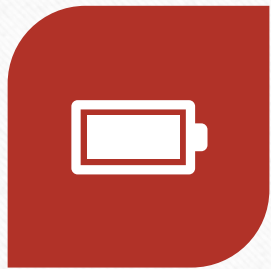
www.recycle.ocalafl.org | 352-351-6697

Household Hazardous Waste



Paint

Fleet Collected and Disposed of



723 BATTERIES



2,326 GALLONS
USED OIL



1,489 USED OIL
FILTERS



539 GALLONS OF
ANTIFREEZE

Fleet Hazardous Waste



Used motor oil



Discarded batteries

Code Enforcement Environmental Officers

5 Cleaning practices

- Pour wash water into a utility sink or curbed cleaning facility with a floor drain. Don't pour it out into the parking lot.
- Use dry methods for spill clean-up (sweeping, cat litter, etc.) Don't hose down spills.
- Clean floor mats, filters and garbage cans in a utility sink or curbed cleaning facility with a floor drain. Don't wash them in a parking lot, alley, sidewalk or street.
- Recycle grease and oil. Don't pour it into sinks drains or onto parking lot.
- Keep dumpster area clean and lid closed. Do not overfill.



Illicit Discharge

As defined by the Environmental Protection Agency (EPA), illicit discharge is any discharge to an MS4 that is not composed entirely of stormwater.

Illicit discharge



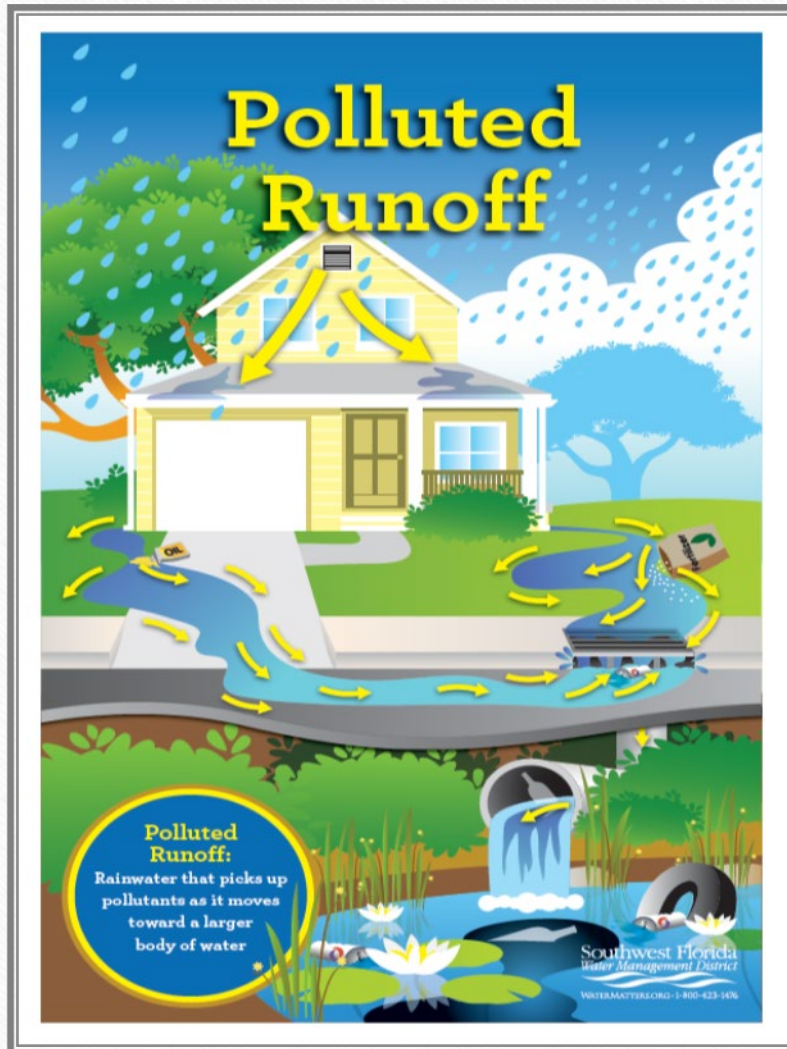
Examples:

- Sanitary wastewater
- Septic tank effluent
- Car wash wastewater
- Motor oil disposal
- Laundry wastewater
- Auto and household toxic disposal
- Leaves and yard waste



Six steps to keep illicit discharge out of our waterways

- Recycle used oil, antifreeze and batteries. Clean up spills immediately with kitty litter or sawdust and sweep it up.
- Wash vehicles at a commercial car wash where the dirty water is sent to a waste treatment plant.
- Empty bottles of household cleaners, pesticides and weed killer should be disposed of according to the labels.
- Grass clippings should be kept out of the roadway and storm drains to avoid algae problems in streams.
- Drop off non-water-based paints, thinners and solvents at appropriate sites. Water based paints can be rinsed in the sink and oil based can be mixed with kitty litter or sawdust and discarded with trash.
- Bag and collect pet waste. The bag can be discarded in the trash, or the contents emptied into the toilet and flushed.



Cars

- Recycle Old Motor Oil and Antifreeze
- Use Commercial Car Washes
- Repair All Leaks
- DRIVE LESS!

Lawn

- Choose Slow-Release Fertilizer
- Water-In Your Fertilizer
- Properly Dispose of Hazardous Chemicals
- Pick the Right Pesticides

Erosion

- Vegetate Bare Spots In Your Yard
- Report Issues with Construction Silt Fences
- Fill Holes Created By Animals
- Report Sinkholes

Animals

- Whether Your Pet Walks, Flies, or Slithers- YOU Need to Clean Up After It!
- Flush It, Bury It, Bag It, or Trash It

Nitrates

- Nitrates cause rapid growth of invasive algal blooms in our springs
- Never Dump Anything Down Storm Drains
- Regularly Inspect Your Septic Tank System

Keep in mind...

What we do on land affects the quality of the water we drink and use in so many ways.

Many small sources of pollution add up to cause big water quality problems.

Natural things such as soil, leaves, grass clippings and pet waste can cause water pollution.

Automobiles and other vehicles cause water and air pollution.

Questions/Comments

