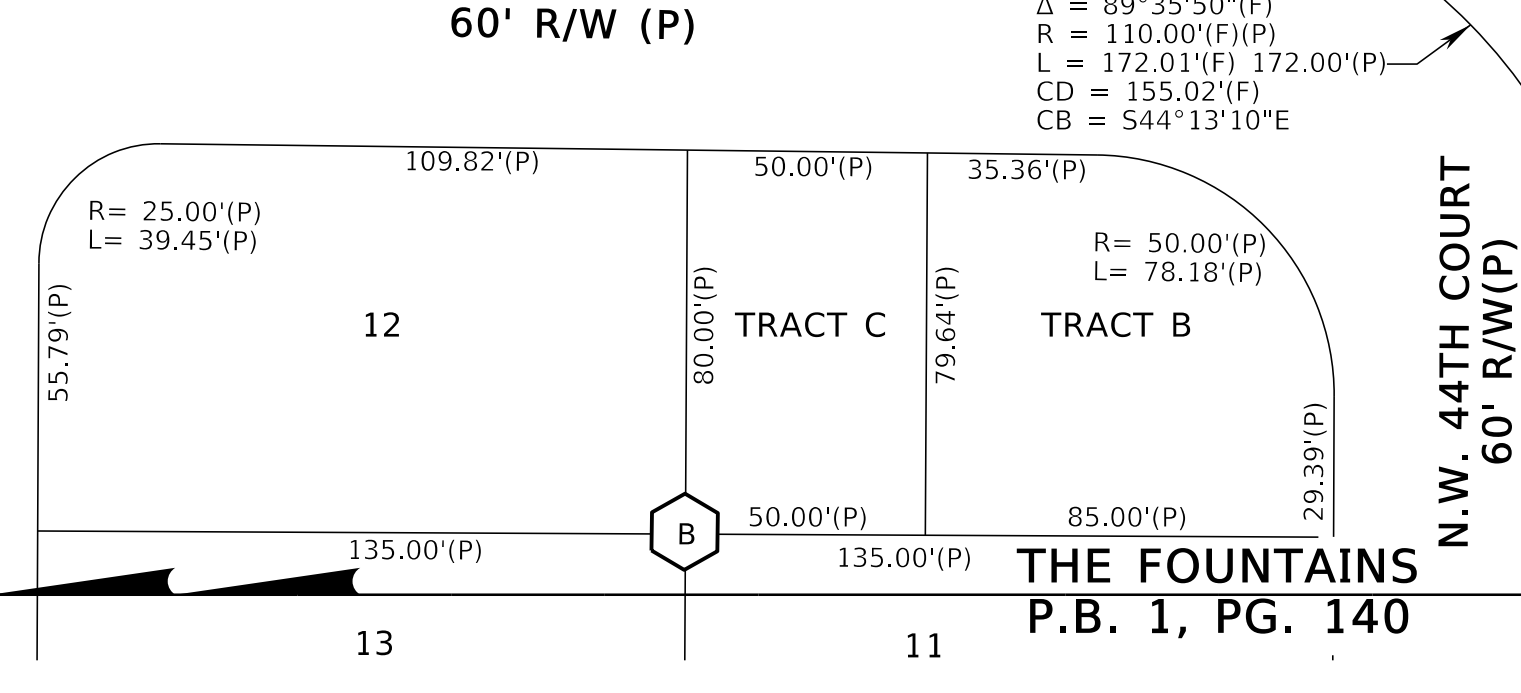
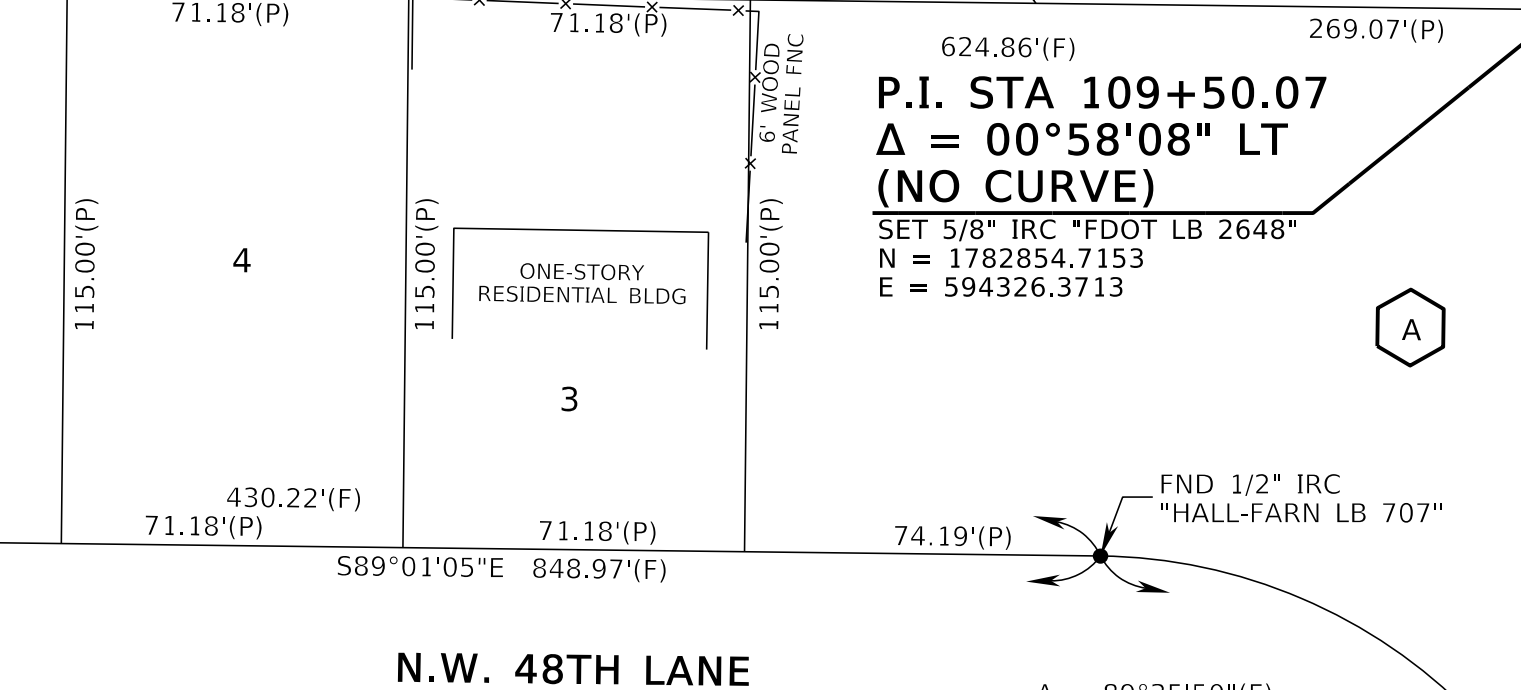
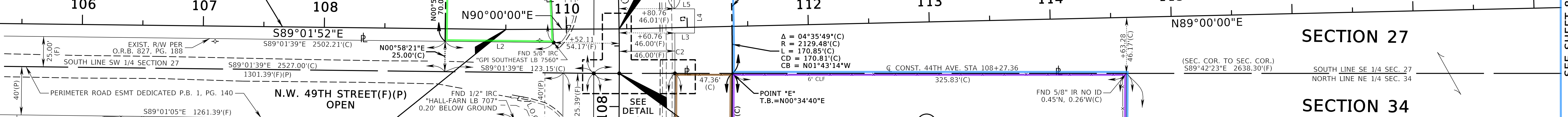


CURVE SBLC1
 P.I. STA 109+75.06
 N = 1782965.7264
 E = 594421.3614
 Δ = 08°06'38" LT
 R = 2083.48'
 T = 147.71'
 L = 294.93'
 P.C. STA 108+27.36
 P.R.C. STA 111+22.29

CURVE SBLC2
 P.I. STA 112+66.95
 N = 1783255.5967
 E = 594383.0307
 Δ = 07°56'41" RT
 R = 2083.48'
 T = 144.68'
 L = 288.90'
 P.R.C. STA 111+22.29
 P.T. STA 114+11.19



CURVE	Δ	RADIUS	LENGTH	CHORD DISTANCE	CHORD BEARING
C1	04°28'23"(C)	5321.50'(C)	415.44'(C)	415.33'(C)	N01°53'42"W
C2	00°53'44"(F)	2129.48'(F)	33.28'(F)	33.28'(F)	N00°07'26"E
C3	00°52'53"(D)	2129.48'(D)	32.76'(D)	32.76'(D)	N02°25'45"W
C4	03°08'04"(C)	2129.48'(C)	116.49'(C)	116.48'(C)	N07°18'39"W
C5	00°26'38"(C)	2037.48'(C)	15.78'(C)	15.72'(C)	N04°01'05"W
C6	06°40'14"(F)	2129.48'(F)	247.93'(F)	247.79'(F)	N04°11'51"W
C7	06°41'05"(D)	2129.48'(D)	248.45'(D)	248.31'(D)	N04°11'51"W

NO.	BEARING	DISTANCE
L1	N32°11'06"E	40.07'(C)
L2	N89°01'39"W	89.69'(C)
L3	S89°34'01"E	16.32'(F)(D)
L4	N00°34'53"E	20.00'(F)(D)
L5	N89°34'01"W	16.73'(F)(D)

07/22/2024