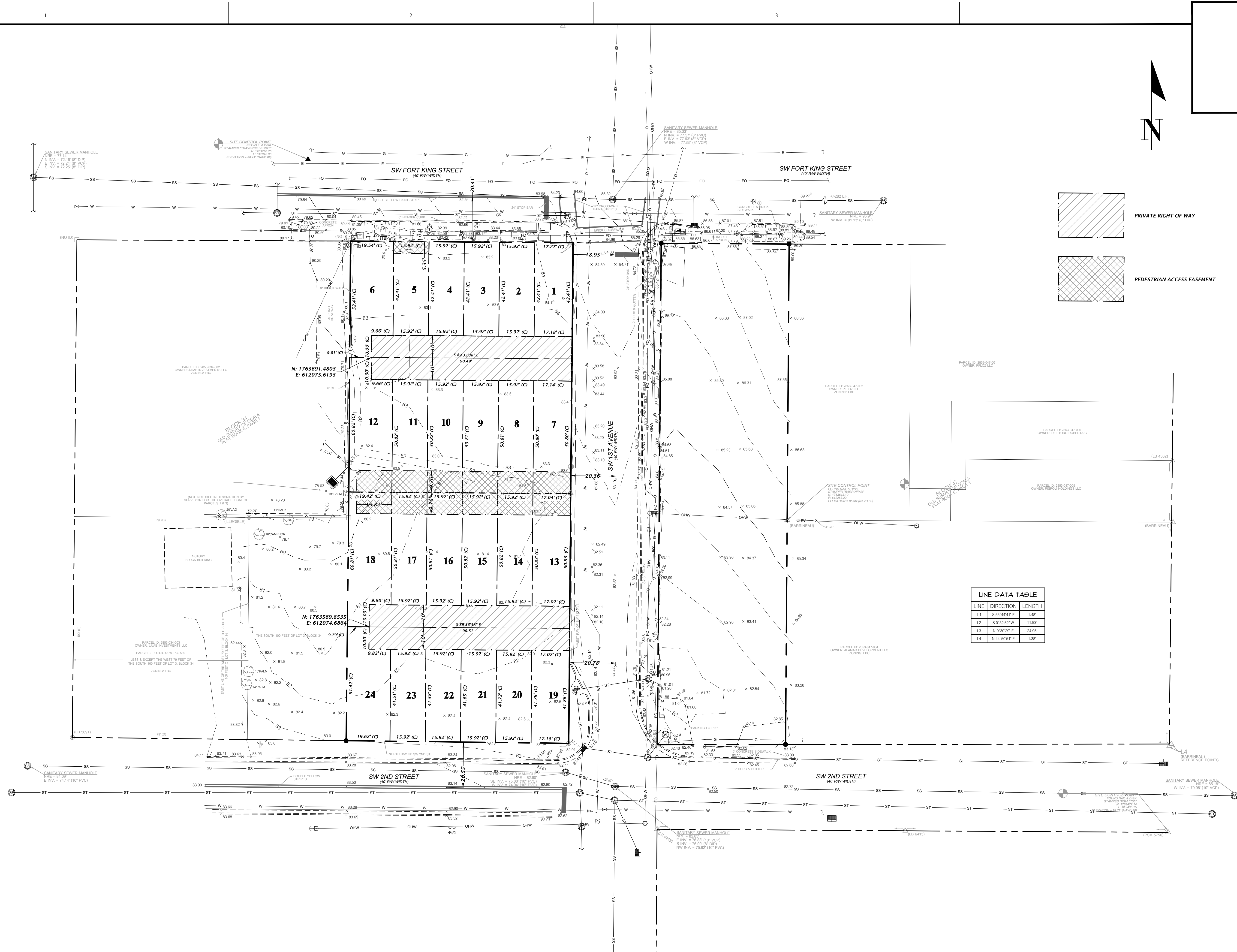


**SUBMITTED TO**  
**CITY OF OCALA**

# CITY OF OCALA

Tech: mitchellm Plot Date: May 26, 2022 10:07am Filename: N:\2021\21-0111\Departments\04\_Engineering\02\_DWG\Production Files\21-0111 CV.dwg

Test: mibelm Plot Date: May 26, 2022 4:18pm Filename: N:\2021\21-0111\Drawings\02\_DWG\Production\Fla\21-0111\_P1.dwg



LINE DATA TABLE		
LINE	DIRECTION	LENGTH
L1	S 55° 44' 41" E	1.48'
L2	S 0° 32' 52" W	11.83'
L3	N 0° 30' 29" E	24.95'
L4	N 44° 50' 51" E	1.38'

2100 SE 7th Street, Suite 800  
Ocala, Florida 34471  
(352) 414-4621  
www.chw-inc.com  
est. 1988 FLORIDA  
CA-5075

**CHW**  
Professional Consultants

1"=20'  
NOT SCALE  
BASED ON  
ORIGINAL DRAWING  
THIS SHEET, ADJUST  
SCALES ACCORDINGLY.

CONTRACTOR'S REVISIONS

3/14/22 CITY OF OCALA  
4/21/22 CITY OF OCALA

CLIENT: OFK OCALA, LLC

DESIGNER: M. MASON, P.E.

PROJECT: ONE FORT KING

SHEET TITLE: PRELIMINARY PLAT

PROJECT NUMBER: 21-0111

DANIEL H. YOUNG

FL PE No. 70780  
SHEET NO.

C002





FL PE No. 70780		SHEET NO.: <b>SL-1</b>	
DANIEL H. YOUNG		PROJECT NAME: <b>21-0111</b>	
TECHNICIAN: <b>T.F. COWART</b>	CLIENT: <b>OPK OCALA A LLC</b>	SHEET TITLE: <b>SIGHT LINE EXHIBIT</b>	
DRAWN BY: <b>M. MASON, P.E.</b>	PROJECT: <b>ONE FORT KING</b>		
CHECKED BY: <b>D.H. YOUNG, P.E.</b>	QUALITY CONTROL: <b></b>		
SUBMITTALS: <b>3/14/22 CITY OF OCALA 4/21/22 CITY OF OCALA</b>		SCALE: <b>1"=60'</b>  VERTICAL SCALE BAR SCALE VERTICAL SCALE ON ORIGINAL DRAWING 0 1/2" IF NOT ONE INCH ON SCALE ACCORDING.	
CONSTRUCTION/REV. REVISIONS:		Professional Consultants <b>CH&amp;N</b> 2100 SE 7th Street, Unit B02 <b>OCALA, Florida 34471</b> <b>(352) 434-4821</b> <b>WWW.CH&amp;N-INC.COM</b>  <b>est. 1988 FLORIDA</b> <b>CA-B076</b>	





DATE OF PLAT OR MAP:

LINE	DIRECTION	LENGTH
L1	S 55°44'41" E	1.48'
L2	S 0°32'52" W	11.83'
L3	N 0°30'29" E	24.95'
L4	N 44°50'51" E	1.38'

THE ABOVE DESCRIBED LANDS CONTAIN 12,546.40 SQUARE FEET, MORE OR LESS.

1 OF 1